

## 2.30 Boschert Chuck 30-40



**30-40 STO**

**Boschert** foot mounted chuck without shaft end

**30-40 STW**

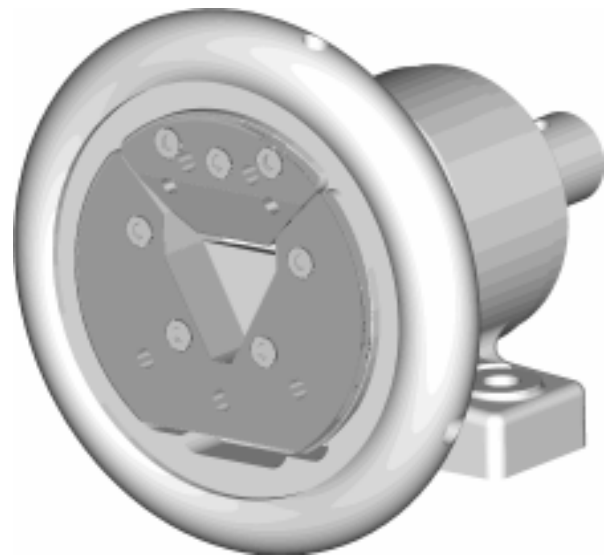
**Boschert** foot mounted chuck with shaft end

**30-40 FLO**

**Boschert** flange mounted chuck without shaft end

**30-40 FLW**

**Boschert** flange mounted chuck with shaft end



Beam weight max.:  max. 1600 kg  (max. 3530 lbs)  
 Square bar:  30 mm - 40 mm (1.1811" - 1.5748")  
 Torque:  350 Nm (250 ft/lb)

### Checkbox !

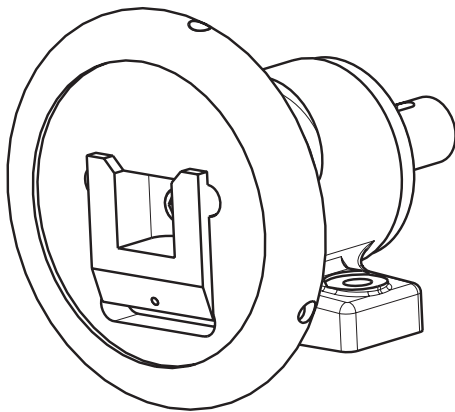
Options				Info
<b>VT-insert:</b>	<input type="checkbox"/> without	<input type="checkbox"/> VT1	<input type="checkbox"/> VT2	
	<input type="checkbox"/> VT6	<input type="checkbox"/> VT7	<input type="checkbox"/> special	
<b>Hardness:</b>	<input type="checkbox"/> 52 HRC	<input type="checkbox"/> 58 HRC	<input type="checkbox"/> special HRC	2.33
<b>Model:</b>	<input type="checkbox"/> pillow block	<input type="checkbox"/> flange chuck		
	<input type="checkbox"/> 90° foot	<input type="checkbox"/> extented chuck		5.40/5.41
	<input type="checkbox"/> opening angle ±30°			5.43
<b>Journal shaft type:</b>	<input type="checkbox"/> without	<input type="checkbox"/> standard shaft	<input type="checkbox"/> special	2.33
<b>Handwheel lock:</b>	<input type="checkbox"/> without	<input type="checkbox"/> lock type I	<input type="checkbox"/> lock type II	
		<input type="checkbox"/> left	<input type="checkbox"/> right	2.33
	(We recommend handwheel locks on applications in turret winders)			
<b>Add. parts:</b>	<input type="checkbox"/> without	<input type="checkbox"/> clutch	<input type="checkbox"/> drive	7.00
	<input type="checkbox"/> brake			6.00
<b>Speed:</b>	<input type="checkbox"/> <50 rpm	<input type="checkbox"/> 50 – 1000 rpm	<input type="checkbox"/> >1000 rpm	

Inquiry- and order form see chapter 9.00

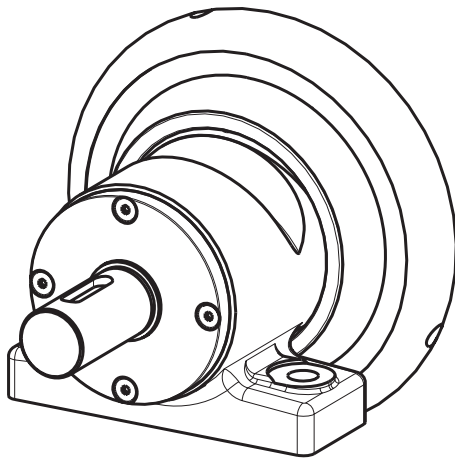
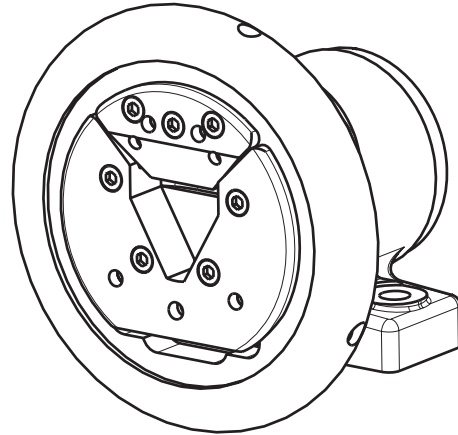
# Boschert-Chuck foot mounted chuck 30-40



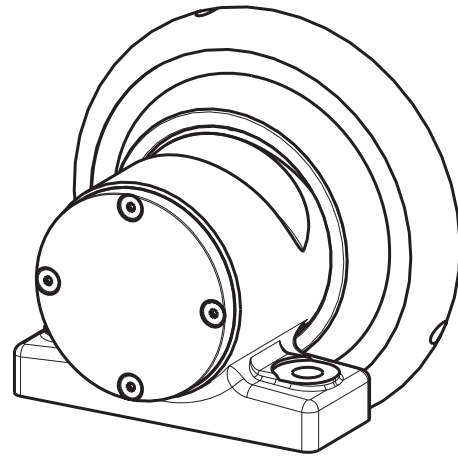
Boschert-Chuck 30-40 type C



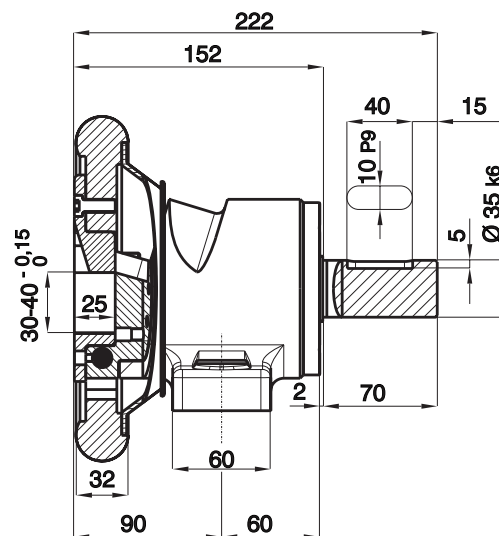
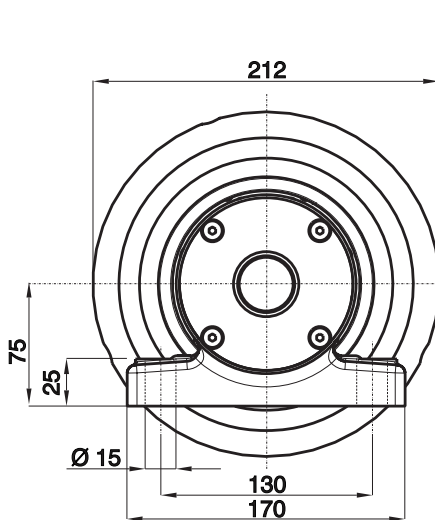
Boschert-Chuck 30-40 type VT



STW 30-40  
chuck with shaft end



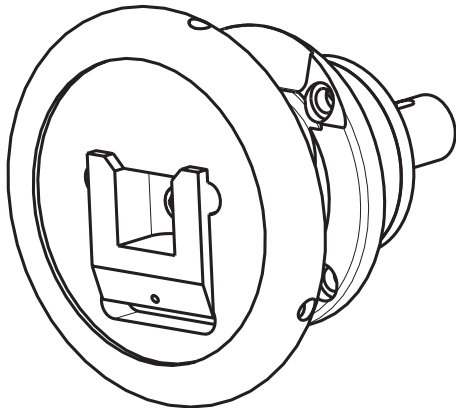
STO 30-40  
chuck without shaft end



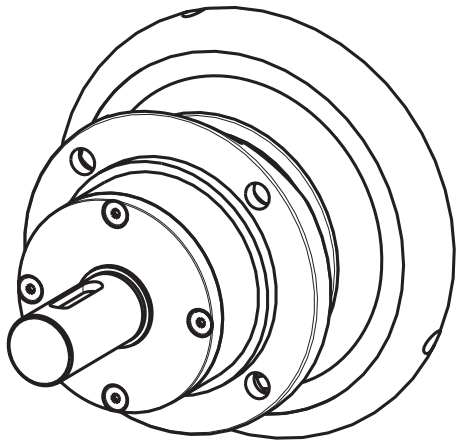
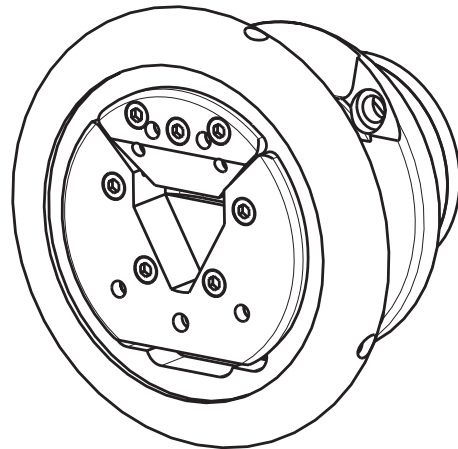
# Boschert-Chuck flange mounted chuck 30-40



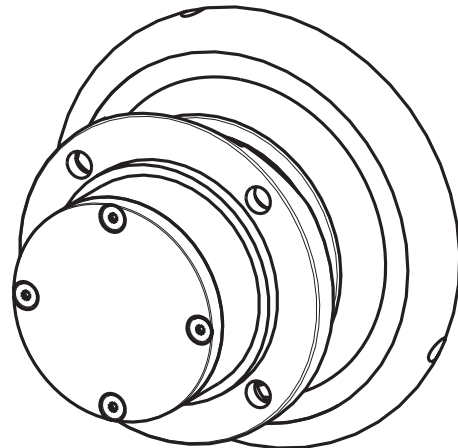
Boschert-Chuck 30-40 type C



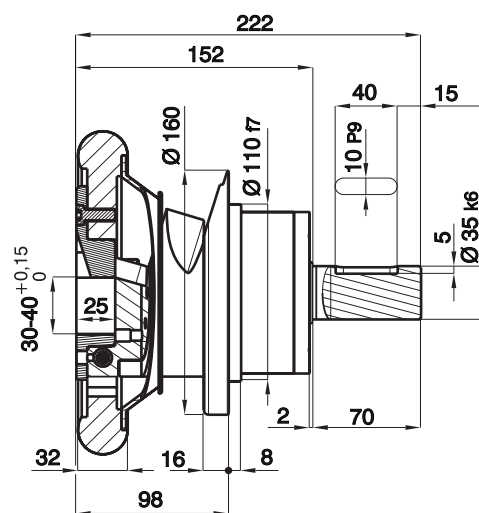
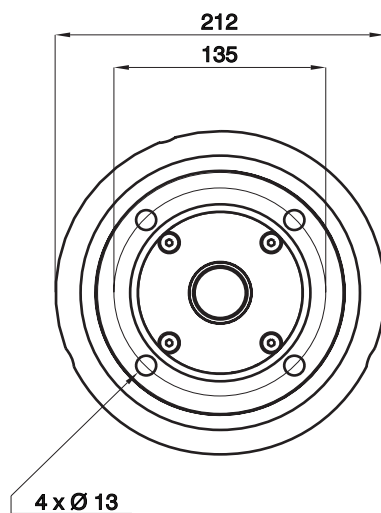
Boschert-Chuck 30-40 type VT



FLW 30-40  
chuck with shaft end



FLO 30-40  
chuck without shaft end

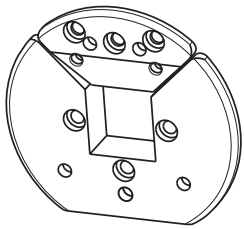


We recommend handwheel locks on applications in turret winders.  
Handwheel-diameter on chucks with lock type II: Ø 250 mm

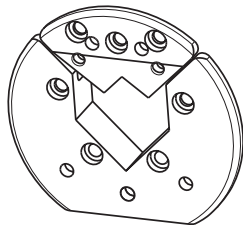
# Boschert-Chuck Options 30-40



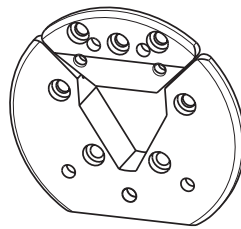
## VT-insert



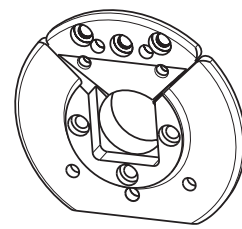
VT 1



VT 2



VT 6



VT 7

For VT2 and VT 6 a radial driver is necessary. See information page 5.23

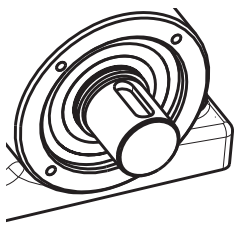
Info  
5.30

Info  
5.31

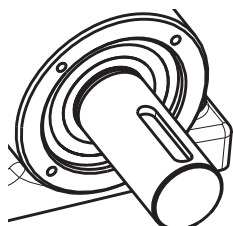
Info  
5.32

Info  
5.33

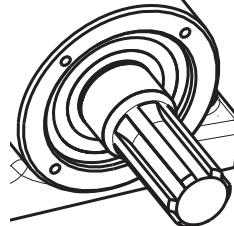
## Shaft ends



ESB



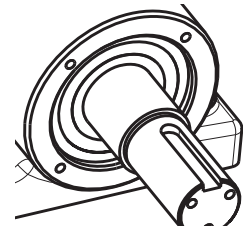
ESB i



DSB



RU



HRU

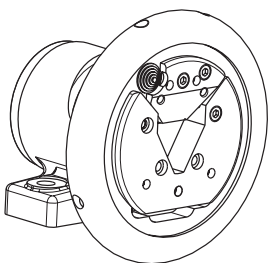
Above shaft ends are only available together  
with Boschert-components.

Info  
5.50

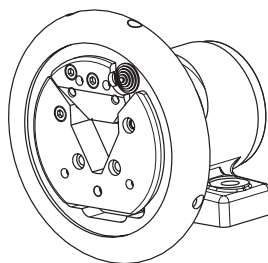
Special shaft ends on customer request

Max. shaft-dia.: Ø 50 mm  
(special shaft without stop)

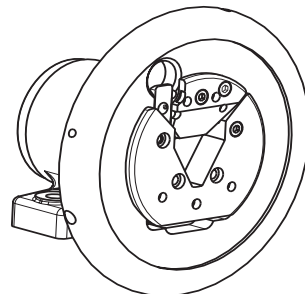
## Handwheel lock



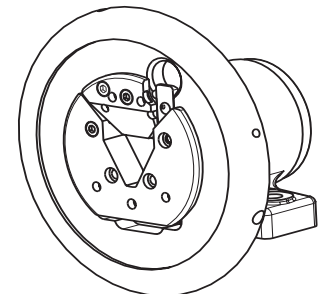
HRV I left



HRV I right



HRV II left



HRV II right

We recommend handwheel locks  
on applications in turret winders.

Info  
5.44

Info  
5.45

Handwheel-diameter on chucks with lock type II: Ø 250mm