

## 2.40 Boschert-Chuck 40-50



**40-50 STO**

**Boschert** foot mounted chuck without shaft end

**40-50 STW**

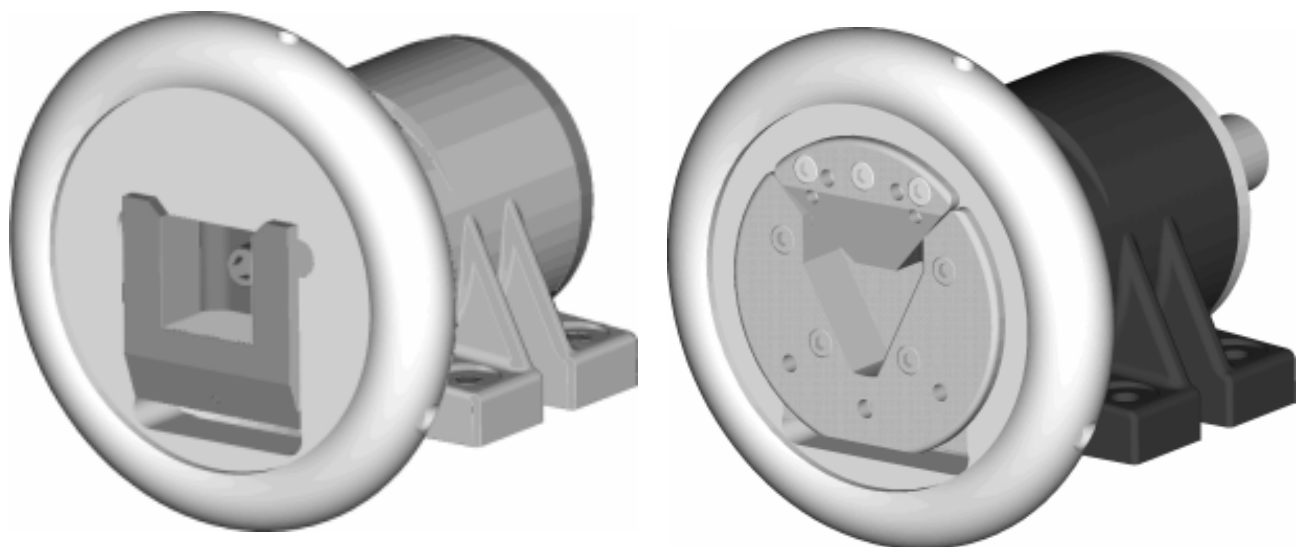
**Boschert** foot mounted chuck with shaft end

**40-50 FLO**

**Boschert** flange mounted chuck without shaft end

**40-50 FLW**

**Boschert** flange mounted chuck with shaft end



Beam weight max.:

max. 2800 kg  (max. 6170 lbs)

Square bar:

40 mm - 50 mm (1.5748" - 1.9685")

Torque:

1100 Nm (800 ft/lb)

### Checkbox !

Options				Info
<b>VT-insert:</b>	<input type="checkbox"/> without	<input type="checkbox"/> VT1	<input type="checkbox"/> VT2	
	<input type="checkbox"/> VT6	<input type="checkbox"/> VT7	<input type="checkbox"/> special	
<b>Hardness:</b>	<input type="checkbox"/> 52 HRC	<input type="checkbox"/> 58 HRC	<input type="checkbox"/> special HRC	2.43
<b>Model:</b>	<input type="checkbox"/> pillow block	<input type="checkbox"/> flange chuck		
	<input type="checkbox"/> 90° foot	<input type="checkbox"/> extented chuck		5.40/5.42
	<input type="checkbox"/> opening angle $\pm 30^\circ$			5.43
<b>Journal shaft type:</b>	<input type="checkbox"/> without	<input type="checkbox"/> standard shaft	<input type="checkbox"/> special	2.43
<b>Handwheel lock:</b>	<input type="checkbox"/> without	<input type="checkbox"/> lock type II		
		<input type="checkbox"/> left	<input type="checkbox"/> right	2.43
(We recommend handwheel locks on applications in turret winders)				
<b>Add. parts:</b>	<input type="checkbox"/> without	<input type="checkbox"/> clutch	<input type="checkbox"/> drive	7.00
	<input type="checkbox"/> brake			6.00
<b>Speed:</b>	<input type="checkbox"/> <50 rpm	<input type="checkbox"/> 50 – 1000 rpm	<input type="checkbox"/> >1000 rpm	

Inquiry- and order form see chapter 9.00

Mattenstraße 1  
79541 Lörrach-Hauingen

infokl@boschert.de  
www.boschert.de

Tel.: 07621 / 95 93 24 – 26  
Fax: 07621 / 55 184

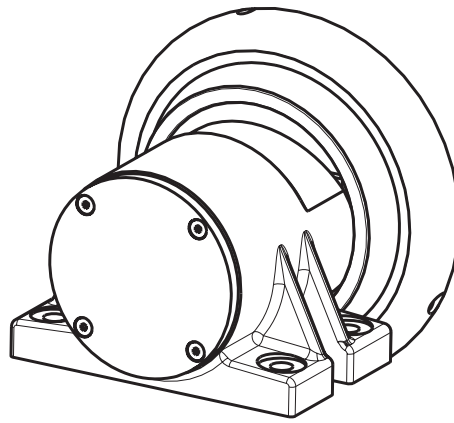
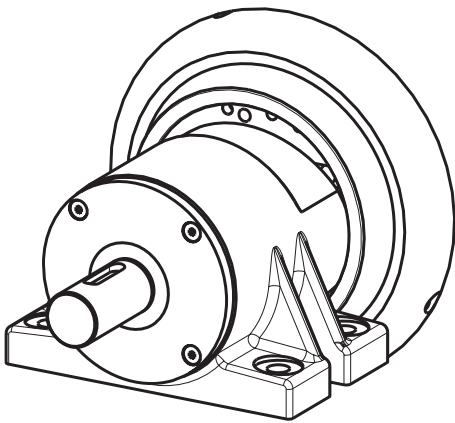
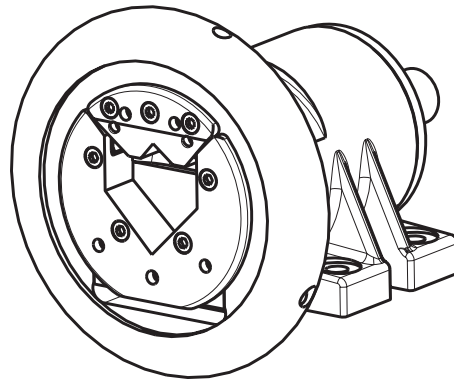
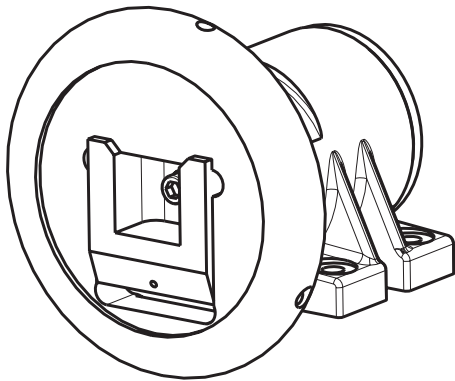
**2.40**

# Boschert-Chuck foot mounted chuck 40-50



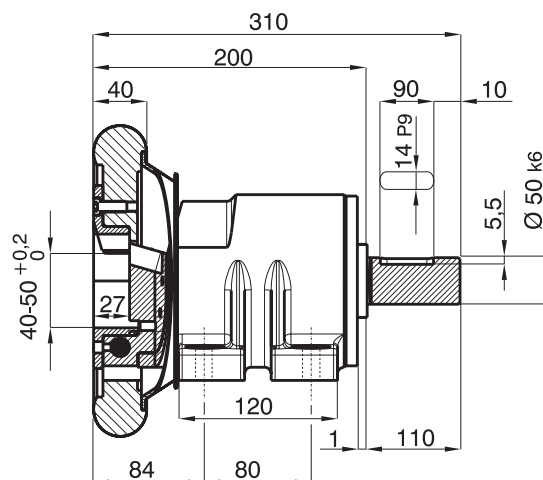
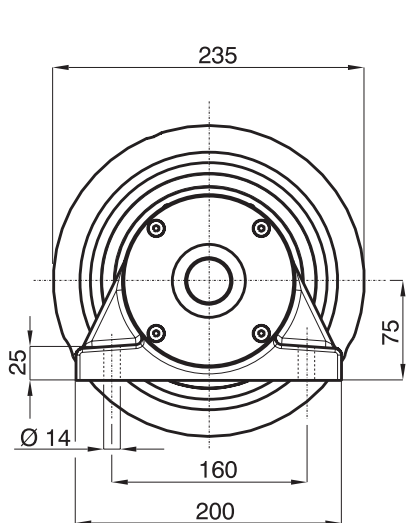
Boschert-Chuck 40-50 type C

Boschert-Chuck 40-50 type VT



STW 40-50  
chuck with shaft end

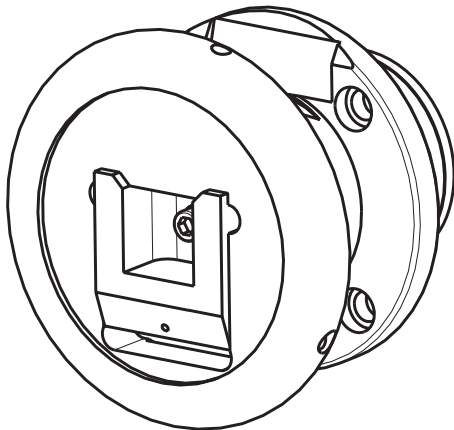
STO 40-50  
chuck without shaft end



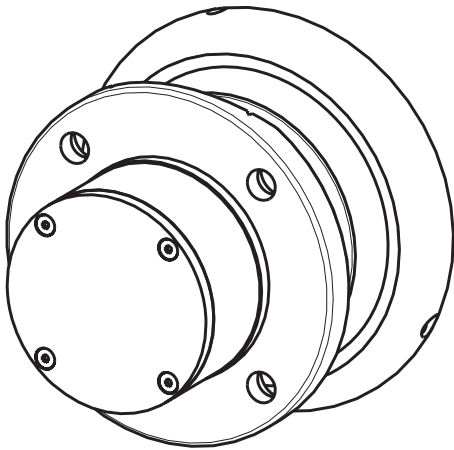
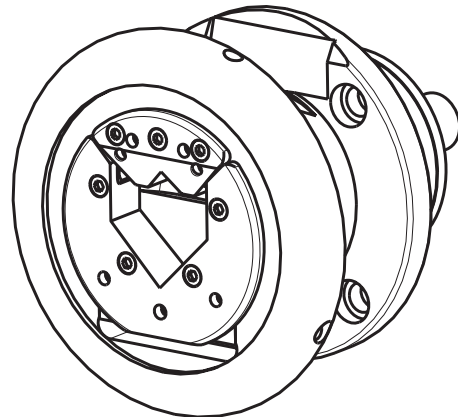
# Boschert-Chuck flange mounted chuck 40-50



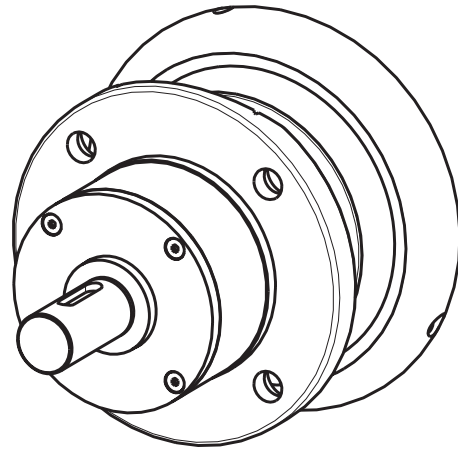
Boschert-Chuck 40-50 type C



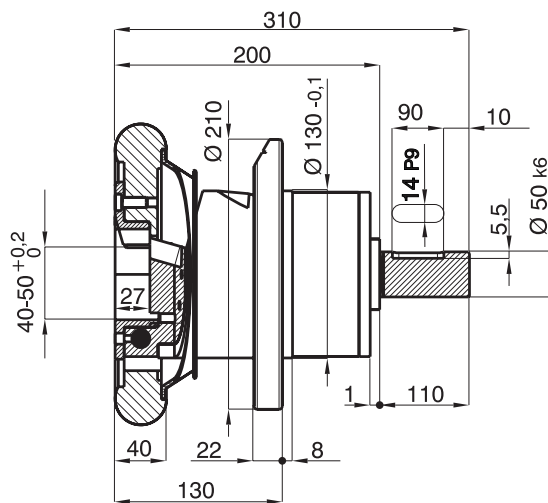
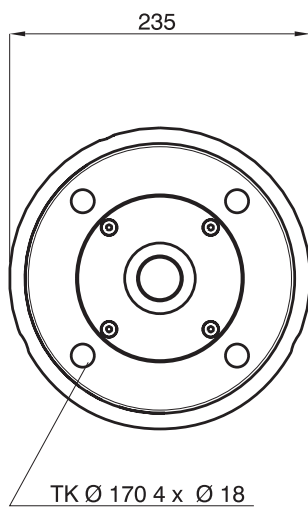
Boschert-Chuck 40-50 type VT



FLO 40-50  
chuck without shaft end



FLW 40-50  
chuck with shaft end



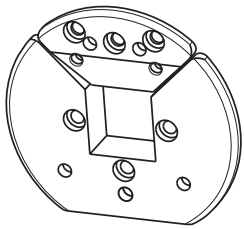
We recommend handwheel locks on applications in turret winders.

Handwheel-diameter on chucks with lock type II: Ø 250 mm

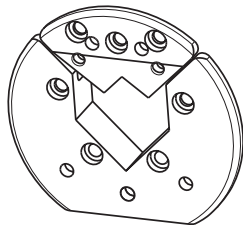
# Boschert-Chuck Options 40-50



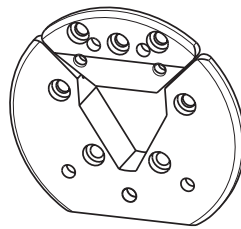
## VT-insert



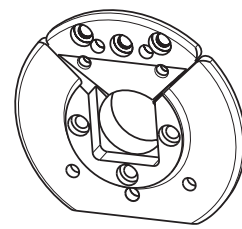
VT 1



VT 2



VT 6



VT 7

For VT2 and VT 6 a radial driver is necessary. See information page 5.23

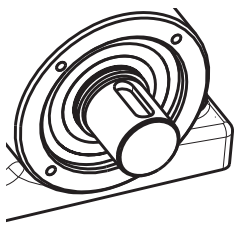
Info  
5.30

Info  
5.31

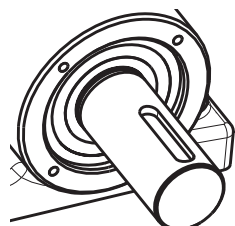
Info  
5.32

Info  
5.33

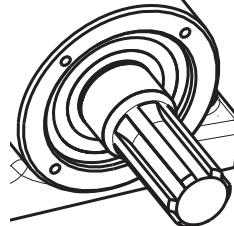
## Shaft ends



ESB



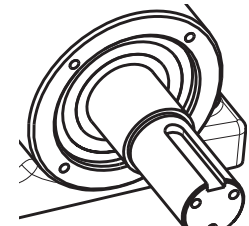
ESB i



DSB



RU



HRU

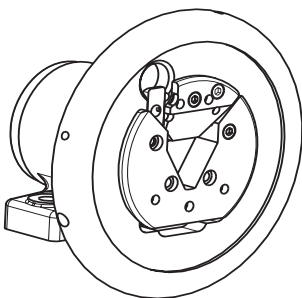
Above shaft ends are only available together with Boschert-components.

Info  
5.50

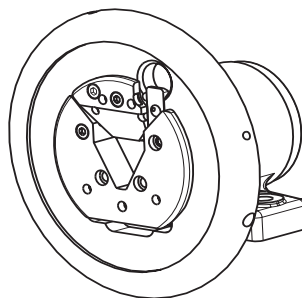
Special shaft ends on customer request

Max. shaft-dia.: Ø 65 mm  
(special shaft without stop)

## Handwheel lock



HRV II left



HRV II right

Info  
5.44

Info  
5.45

We recommend handwheel locks on applications in turret winders.

Handwheel-diameter on chucks with lock type II: Ø 250 mm