



**EuroBlech Exhibition 2010 – Hannover (Deu)**



**Rol 6 System – Adjustable vee die**



**Foreign customer: Váradi Metal Ltd**





## EuroBlech Exhibition 2010

This year as well, as many other years before, Rolleri has participated to EuroBlech 2010, the biennial Exhibition for the sheet metal working field which took place from the 26<sup>th</sup> to the 30<sup>th</sup> October. This event represents for us the focus of the global sheet metal working industry and a window on the trends for this industry field.



In this occasion our customers have appreciated once again our commitment to the development of new solutions, state-of-the-art technologies and, above all, services.



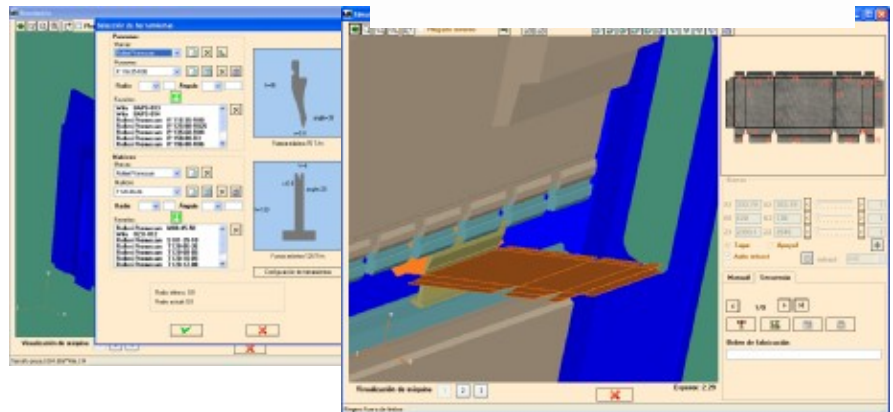
As far as technological innovations is concerned, EuroBlech has been a good chance for visitors to see and try our new Rol4 and Rol5 fast clamping systems for upper Promecam tools.

By using Rol5 system, the customer can mount and remove standard Promecam punches vertically without any modification neither to the tools nor to the press brake. By one movement only the tool is mounted and by tightening the central screw tools are perfectly seated and aligned.

Rolleri has also developed fast clamping systems for lower tools, which have been introduced at EuroBlech. The new ROL2 System Hyd enables the perfect clamping of dies hydraulically, whereas ROL2 System PN is a pneumatic system, which can also be mounted directly on a die holder applied on a press brake table.

Euroblech has also been the chance to introduce successfully our new brand ROL6 System, an adjustable vee Die, that you can find in the following pages of this Rolleri News Edition.

Innovation is also represented by our new ROLLERI BEND, a simulation software which processes the correct bending sequence of every profile and finds the necessary tools to realise it. This new software stands out from other softwares in the market for being easy and handy and for meeting all real needs of anybody involved in bending procedures.



As far as Services is concerned, Rolleri is a reference point in the metal working field in Italy because it can offer not only a wide range of tools and equipment, but also more than 30 different courses referring to marketing, sales, purchase and logistics. Customers can rely on our consultancy Rolleri Cultura d'Impresa (Rolleri Company Culture) to be advised and to organise and participate to training meetings in Italy as well as in some European countries.

It was a very successful EuroBlech edition with hundredths of recorded customer's visits. This international exhibition has enabled us to get in contact with new potential customers coming not only from Europe, but also from non-EU countries like US, Southern America, Kuwait, China and Australia. 90% of the visitors were professionals of the sheet metal working field. Among them, most were production engineers, quality managers, purchase managers, technical managers and machine operators satisfied with our good production range and innovative solutions.

*At Rolleri customers are the focus of our work.*





Doubts about the choice of the most suitable tools?

Visi tour new website [www.rolleritools.com](http://www.rolleritools.com)

Now you can consult Rolleri bending rule online

**Soluzione di Piegatura**

Utilizzando i dati sotto riportati, si otterranno i parametri di piegatura  
\* i calcoli indicati sono per piegature libere o in aria

Materiale:  Spessore:  Gradi di piegatura:

Gradi:

Muovere il cursore per selezionare una apertura cava differente

Apertura Cava (mm)	4	5	6
Bordo interno minimo (mm)	3	3.5	4
Raggio interno (mm)	0.5	0.7	0.8
Forza di piegatura (Tonn/mt.)	4	3	2

Piega schiacciata (Ton/m)  Schiacciata parziale (Ton/m)

Per qualsiasi informazioni, contattarci al seguente indirizzo e-mail: [info@rolleri.it](mailto:info@rolleri.it)

An easy and quick tool to choose the most suitable vee for any bending need and subsequently internal radius, minimum internal edge and necessary tonnage.

For any further information or enquiry about it, our Technical Department is at your complete disposal.



## ROL6 System – Adjustable Vee Die

Rol6 System is an adjustable vee die from 40mm to 360mm available in two versions: manual and automatic.

In the manual version the die opening is set by a wheel or by a motoreducer connected to the die.

In the automatic version the die opening is set by a keyboard; in the standard version this keyboard is not connected to the press brake CNC, however it can be connected with extra charges.



Rol6 basis is 720mm wide but it can be also mounted on press brakes with smaller table. In case of necessity, an adapter 400mm wide can be mounted on the die basis to reduce width. In the table at the right side you can see how many tons per meter the die can bear according to the angle.

Angolo	Ton/m
0°	600
90°	600
60°	400

Standard Rol6 radius on the vee opening is 10mm, but in order to prevent wear from affecting the bending quality, the radius shim can be replaced.

## Foreign Customer:



[www.varadi.hu](http://www.varadi.hu)

### History and Company

Váradi Metal Ltd., Hungarian company ISO9001 certified with headquarter in Dunaföldvár, has been in the market for more than ten years and it's specialized in the CNC sheet metal working field. Váradi Metal Ltd is well known both in Hungary and abroad for its reliable products and its high quality.

Most of Váradi Metal turnover comes from abroad and represents 80% of its total turnover. In fact, Varadi brand, which was known in Germany, Switzerland, Austria and The Netherlands only, has recently started being appreciated in the Hungarian market as well.

The company employs about 110 people, which concentrate on three main activities: laser cutting, bending and nibbling. The company machine park consists in very specialized and state-of-the-art machines to machine all steel types, including zinc coated steel and aluminum.

### Products

Váradi Metal Ltd realises both finished and semi-finished products.

Among semi-finished products, Váradi realises external covers for sheet metal working machines, bases and frames, ventilation grilles and internal components of machines. All of them can be realised of different types of steel and therefore they can be customised (mild steel, stainless steel, corrosion-resistant steel, aluminum).





Among finished products, Váradi realises: shelves, cabinets, tool-holder cabinets, office desks with chest of drawers, safes, changing rooms lockers, warehouse furniture with vertical drawers to hold tools, boilers and pellet boilers. All finished products can be customised in finishing and colour.



## Machine park

Varadi Metal Kft. machine park consists in specialized machines for the following activities:

- 2D and 3D laser cutting
- Bending (press brakes from 40T to 260T)
- Sheet metal stamping
- Nibbling
- Robot driven welding (Welding systems MIG-MAG e WIG)
- Assembly
- Powder and liquid painting
- Milling (CNC machining center)

## Relationship with Rolleri

Since about six years Varadi Kft. has been tightly cooperating with Rolleri and choosing Rolleri as sole supplier of press brake tooling. In fact, our high quality and precision of our tools guarantee our customers good results in their finished products. We have a very effective relationship which has been strengthened by the customer's trust in our Technical Department.