

ACCESSORIES CATALOGUE



WILSON
XTRA



Distribuitor:



S.C. SM TECH SRL

Tehnologii și soluții pentru industria prelucrării tablelor

Tel: 0040-331-401599

Tel/Fax: 0040-231-515702

Tel Mob: 0040-745-528494

E-mail: info@sm-tech.ro

www.sm-tech.ro

www.wilsontool.ro

Vă stăm la dispoziție cu plăcere cu orice informație sau ofertă pentru scule
Wilson Tool destinate mașinii d-voastră Trumpf



Contents

Hand Tools	4-8
Coolants and Lubricants	9-10
Tool Handling & Storage	11-22
Tool Assembly & Alignment	23-24
Punch Press Tooling Accessories	25-34
Punch Press Machine Accessories	35-37
▶ Press Brake Tooling Accessories	38
▶ Press Brake Machine Accessories	39-41
▶ Terms & Conditions/Notes	42-43

Hand Tools



Diamond File

16cm industrial file. Plated with finely selected diamond powder, 120-140 mesh. Can be used on hardened tool steel.

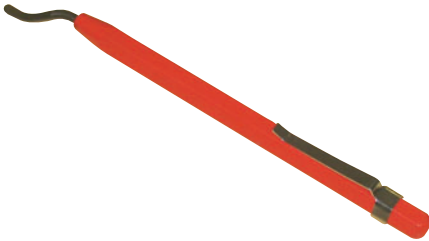
Cat No. **6059**



Diamond Needle File Set - 16cm

150 Grain (medium grade). With tapered handles. Supplied in a PVC wallet. Suitable for light duty & workshop use. Contains hand, half round, three square, round, square and knife.

Cat No. **55000**



Mini Burr Sheet Metal Deburring Tool

This tool consists of a B10 universal blade mounted in an 8mm hexagonal aluminium handle. Non-removable blade. Length 140mm. Supplied with pocket clip.

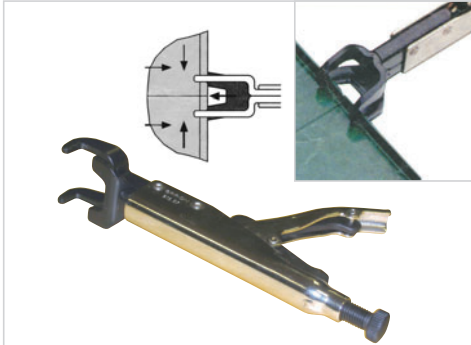
Cat No. **55003**



Oil Stone

100mm x 13mm 3 square aluminium oxide sharpening stone.

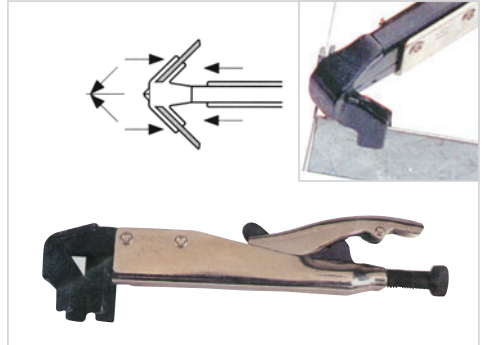
Cat No. **6060**



Butt-Joint Clamp

For auto body repair & steel fabrication. Chrome steel body with narrow profile jaws for confined areas. Straight line jaw motion allows clamping through holes. Push button release for one handed clamp releasing. No provisional (or track) welding required to hold auto body parts for assembly. For clamping two butt joints. Jaw width 45mm. Throat depth 9mm.

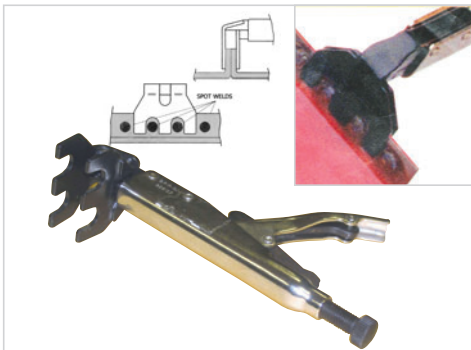
Cat No. **55046**



Angle Clamp

Clamps two sheet metal pieces of the same thickness at 90° to one another. Jaw width 50mm. Throat depth 15mm.

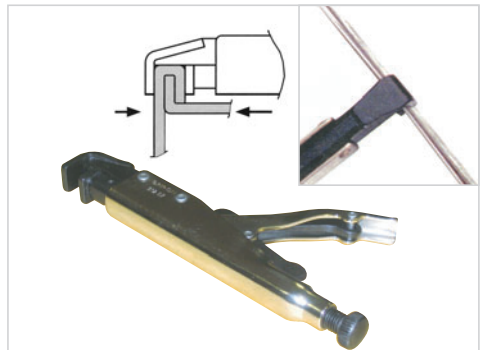
Cat No. **55047**



Lap & Spot Weld Joint Clamp

The 'W' shaped jaw allows four consecutive spot welds without moving the tool. Jaw width 57mm. Throat depth 36mm.

Cat No. **55048**

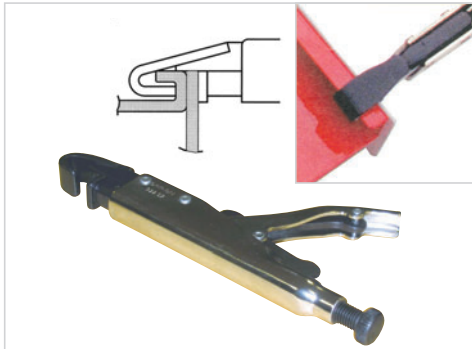


Lap Joint Clamp

Clamps two lap joints. Jaw width 18mm.

Cat No. **55049**

Hand Tools



Flanged Lap Joint Clamp

Clamps two flanged adjacent joints.
Jaw width 18mm. Throat depth 7mm.

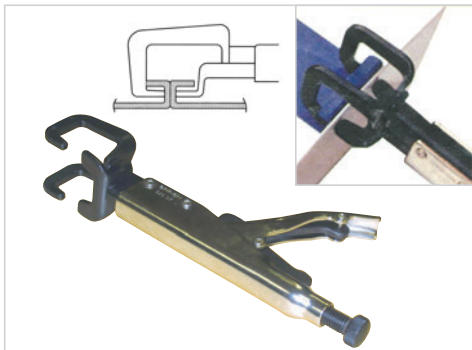
Cat No. **55050**



9mm Hex Nut Driver

Selected for assembly / disassembly of your Form tool die bases, for general maintenance and upkeep.

Cat No. **55266**



Flanged Lap & Adjacent Joint Clamp

Clamps two flanged & adjacent joints.
Jaw width 45mm. Throat depth 25mm.

Cat No. **55051**



Spanner Wrench

Adjustable 'c' hook wrench for removing B Station Thick Turret & 1/4" Station Thin Turret/Strippit punch heads.

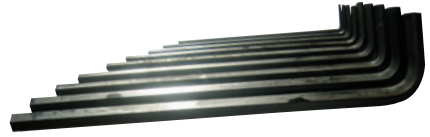
Cat No. **6058**



Tru-Arc Pliers

Retaining ring pliers for changing B Station Thick Turret strippers & Old Style 5/8" Drop-In strippers.

Cat No. **6056**



Metric Hex Key Wrench Set

Metric 9 piece long arm set. Contains 1.5x77, 2x83, 2.5x90, 3x98, 4x106, 5x118, 6x137, 8x156, & 10x170mm.

Cat No. **24307**

SAE Hex Key Wrench Set

Imperial 13 piece set. Contains .050", 1/16", 5/64", 3/32", 7/64", 1/8", 9/64", 5/32", 3/16", 7/32", 1/4", 5/16" & 3/8".

Cat No. **6057**



Soft Face Hammer

Polyurethane dead-blow hammer. Inside hammer head are steel pellets which impact a split second after the hammer face, reducing rebound.

Cat No. **6106**

Hand Tools



Dynamic Grip Tape Measures

Textured rubber non slip grip case for improved comfort & impact resistance. Locking spring assisted blade return. Rivetted metal end hook. Steel belt clip & wrist strap. Action lock holds the blade precisely where you want it. Blades & hooks are heavy gauge & corrosion resistant, designed for industrial use. Self-aligning hooks ensure accuracy for internal & external measurements. 5m & longer tape hooks have 4 rivets (3m/10' tape hooks have 2). 1/32nds, 1/16ths inch & mm graduations.

Length	Cat.No.	Price
3m/10ft	55025	
5m/16ft	55026	
7.5m/25ft	55027	
10m/33ft	55028	



Tool Kit

The Tool Kit consists of the following:

- (1) Tool Box
- (1) Oil Stone
- (1) Diamond File
- (1) Tru-Arc Pliers
- (1) Spanner Wrench
- (1) Punch Lubricant
- (1) Soft Face Hammer
- (1) Metric Hex Key Wrench Set
- (1) Hex Key Wrench Set (English)
- (1) Assortment of 4 sizes of Square Urethane Ejectors

Cat No. **6091**

Coolants and Lubricants

Wilson X-Cel Sheet Lubricant

Wilson Tool X-Cel is a Shell developed synthetic, high quality lubricant used for sheet metal nibbling, shearing & forming operations. Dissolved in water, X-Cel makes a solution with high resistance to bacterial degradation & keeps tool systems & exposed parts of the machines clean & lubricated.

Benefits of using Wilson X-Cel Sheet Lubricant:

- Increased tool life
- Easier stripping
- Improved sheet marking on forming operations
- Non-hazardous in diluted form
- Not explosive or flammable

Physical Characteristics

- Chlorine free
- Hexahydrotriazine free
- Secondary amine free
- Mineral oil free
- Dissolves & disperses quickly in water



X-Cel 1Ltr Spray

Pre-diluted Wilson X-Cel lubricant in a 1 litre, ready-to-use trigger spray.

Cat No. **24315**

X-Cel 5Ltr Concentrate

Wilson X-Cel lubricant supplied as a concentrate in a 5 litre bottle. The recommended normal dilution ratio is 1:10 with water for most operations. Wilson X-Cel has a natural tendency to dissolve & disperse quickly in water when a solution is prepared whether manually or by a blending device. Preparing a solution is also possible using suitable mixing devices (ventury or volumetric type). An evaluation of the concentration of a mix is easily carried out by refractometer.

Cat No. **24316**

Coolants and Lubricants



Punch Lubricant

For lubricating punch & guide assemblies.

Cat No. **6055**

Tool Handling & Storage

Xtreme Storage Solutions

With lean thinking crucial to today's manufacturers, the structured storage of tools and workshop equipment is becoming increasingly important. Xtreme Storage Solutions from Wilson Tool are designed with lean thinking in mind; "a place for everything and everything in its place".

The cabinets come in a range of sizes to fit in with your particular needs (see below). In addition, there are a wide range of options to customise your storage according to the stocks of tooling you carry, whether punch press or press brake, large or small. Cabinets can be purchased in package deals according to your tooling type, or can be configured with drawer inserts according to your specific storage needs. Whatever jobs you need to run, the tools are immediately available and quick to find.

Built to last, the drawers have a very smooth movement and have a large load bearing capacity. Due to their vertical nature, more than one drawer can be safely opened at once for even quicker, more efficient control of tool inventory. The built in pallet effect will also mean your cabinets are easily movable.



5 Drawer Vertical Storage Cabinets*

Available in two heights for configuration with drawer inserts (see pages 13 to 15) according to your specific storage needs. (Note: V1 cabinets have a typical capacity of 15 drawer inserts. V2 cabinets have a typical capacity of 25 drawer inserts).

Model	Dimensions	Cat. No.	Price
Cabinet V1	1040w x 1050d x 1240h	55164	
Cabinet V2	1040w x 1050d x 2140h	55165	

*Special delivery items. Please contact us for delivery price.

Tool Handling & Storage



Xtreme Storage Solutions – Package Deals

Xtreme Vertical Storage Cabinets are available pre-configured with drawer inserts to suit your tooling type. Note: all package deals use the V1 storage cabinet (dimensions 1040w x 1050d x 1240h). See page 11 for further details.

Package Deal for Press Brake Tooling*

Capacity	Cat. No.	Price
45 x 850mm press brake tool lengths	55185	

Package Deal for Trumpf Style Punch Press Tooling

Capacity	Cat. No.	Price
Up to 315 punches (depending upon punch size)	55162	
120 x size I dies		
60 x size II dies		
120 x strippers		
30 x specials (punch assemblies, dies and strippers)		

Package Deal for Wilson HP Thick Turret Punch Press Tooling*

Capacity	Cat. No.	Price
60 x A station punch assemblies, 80 x A station dies	55163	
40 x B station punch assemblies, 45 x B station dies		
12 x C station punch assemblies and dies		
38 x C station HP punches		
8 x D station punch assemblies and dies		
17 x D station HP punches		
4 x E station punch assemblies and dies		
5 x E station HP punches and dies		

Package Deal for Amada Style Thick Turret Punch Press Tooling*

Capacity	Cat. No.	Price
60 x A station punch assemblies, 80 x A station dies	55177	
40 x B station punch assemblies, 45 x B station dies		
12 x C station punch assemblies and dies		
38 x C station Amada style punches		
8 x D station punch assemblies and dies		
5 x D station Amada style punches, dies and strippers		
4 x E station punch assemblies and dies		
4 x E station Amada style punches, dies and strippers		

*Special delivery items. Please contact us for delivery price.

Tool Handling & Storage



Xtreme Drawer Inserts for Thick Turret Style Tooling*

Drawer inserts designed specifically to hold Thick Turret style tooling. (Note: Drawer inserts are **only** compatible with V1 and V2 Xtreme Storage Cabinets - see page 11).

Style of Tooling	Max. Capacity	Cat. No.	Price
A station punch assemblies	20 Punch assemblies	55166	
A station dies	80 Dies	55255	
B station punch assemblies	20 Punch assemblies	55194	
B station dies	45 Dies	55256	
C station punch assemblies & dies	6 Punch assemblies & 6 dies	55168	
D station punch assemblies & dies	4 Punch assemblies & 4 dies	55169	
E station punch assemblies & dies	4 Punch assemblies & 4 dies	55170	
C station old style (Amada) punches	38 Punches	55171	
D station old style (Amada) punches, dies & strippers	5 Punches, 5 dies & 5 strippers	55172	
E station old style (Amada) punches, dies & strippers	4 Punches, 4 dies & 4 strippers	55173	
C station HP punches	38 Punches	55174	
D station HP punches	17 Punches	55175	
E station HP punches & dies	5 Punches & 5 dies	55176	



Xtreme Drawer Inserts for Thin Turret & Strippit Style Tooling*

Drawer inserts designed specifically to hold Thin Turret & Strippit style tooling. (Note: Drawer inserts are **only** compatible with V1 and V2 Xtreme Storage Cabinets - see page 11).

Style of Tooling	Max. Capacity	Cat. No.	Price
1-1/4" punch assemblies	20 punch assemblies	55167	
1-1/4" dies	45 dies	55256	
3-1/2" station punch assies. & dies	4 Punch assemblies & 4 dies	55178	

*Special delivery items. Please contact us for delivery price.

Tool Handling & Storage



Xtreme Drawer Inserts for Trumpf Style Tooling*

Drawer inserts designed specifically to hold Trumpf style tooling. (Note: Drawer inserts are **only** compatible with V1 and V2 Xtreme Storage Cabinets - see page 11).

Style of Tooling	Max. Capacity	Cat. No.	Price
Punches	63 punches - Station size dependant	55179	
Size 1 dies	40 dies	55182	
Size 2 dies	20 dies	55180	
Strippers	40 strippers	55181	
Cartridge assemblies	5 assemblies	55183	
Size 2 punches & dies	6 punches and 6 dies (4 of the 6 dies can be heavy duty)	55218	
Punches, dies & strippers	4 punches 4 strippers & 12 dies (8 x Size 1, 4 x Size 2 Heavy Duty)	55220	
Size 1 punches & dies	5 punches 30 & dies	55221	



Xtreme Drawer Inserts for Press Brake Tooling*

Drawer inserts designed specifically to hold press brake tooling. (Note: Drawer inserts are **only** compatible with V1 and V2 Xtreme Storage Cabinets - see page 11).

Style of Tooling	Max. Capacity	Cat. No.	Price
Press brake tools	3 x 850mm lengths	55184	

*Special delivery items. Please contact us for delivery price.

Tool Handling & Storage



Xtreme Drawer Inserts for Other Workshop Equipment*

Drawer inserts designed for general workshop equipment, with vertical perforated walls for tool shadow boards and horizontal trays with separation sheets for small component storage.
(Note: Drawer inserts are **only** compatible with V1 and V2 Xtreme Storage Cabinets - see page 11).

Description	Cat. No.	Price
950mm perforated vertical wall, typically used for tool shadow boards	55186	
250mm perforated vertical wall, typically used for tool shadow boards	55187	
Multipurpose horizontal tray with deep sides for small component storage	55188	
1850mm perforated vertical wall, typically used for tool shadow boards	55189	
Multipurpose horizontal shelf with shallow sides	55190	
Multipurpose tool tray for small component storage	55191	
Protective plastic inlay sheet for use with tool tray 55191 (above)	55192	
Separation sheets to compartmentalise tool tray 55191 (above)	55193	

*Special delivery items. Please contact us for delivery price.

Tool Handling & Storage



Tool Cabinet*

Dedicated storage system for turret tooling.

Cat No. **24160**



Tool Transport Unit*

The Lista Tool Transport Unit guarantees safe transportation of your tools. With an all-welded construction, the side panels are reinforced with steel profiles, and are welded to the steel bottom. The side panels are slotted at 25mm intervals, for insertion of frame supports, tool cradles or adjustable shelves.

Colour: RAL 5012.

Includes tray inserts: 1 x 55232, 1 x 55233, 1 x 55234.

Maximum capacity: 6 tool inserts on two tiers.

The transporter is fitted with a pushing handle and four castors (two fixed, two swivel.)

Dimensions 930 (h) x 765 (w) x 508 (d)

Castor: \varnothing 160mm
Carrying capacity: 540Kg

Cat No. **55223**

*Special delivery items. Please contact us for delivery price.

Tool Handling & Storage



Tool Drawer Cabinet*

The Lista Tool Drawer Cabinet is designed for tidy, dust proof and secure storage of your tooling. The drawers are precision built from high quality sheet steel using the latest manufacturing techniques. The cabinet drawers are made from a one-piece sides-and-base design, finished with welded front and back panels and runners.

The drawers are on precision bearings, designed to run smoothly even under maximum load. The drawer walls are slotted all round for custom division using partitioning materials. The cabinet incorporates a cylinder locking mechanism and central locking, including safety locking device. The beech wood cabinet top is sealed with a biological hard wax, designed to resist many workshop elements, including oil, water, solvents and grease.

The main cabinet housing is 100mm from the ground, enabling a forklift or pallet trucks to transport the product, even fully loaded with tooling.

Colour: Light Blue RAL 5012

Dimensions: 1150(h) x 1023(w) x 725(d)

Consists of the following drawer depths: 1 x 50mm, 1 x 250mm, 4 x 150mm.

Heavy duty: 200kg per drawer.

Cat No. **55224**



Tool Adjustable Workbench*

The Tool Assembly bench can be used for tool setting, checking, cleaning and assembly. Combined with a four drawer cabinet, the assembly bench can serve to store equipment as well.

The Beech worktop is manufactured to a high standard, designed to resist the workshop elements such as oil, grease and dirt. The cabinet housing is equipped with a cylinder lock and central locking including a safety locking device.

Colour: light blue RAL 5012

Dimensions: 950(h) x 1500(w) x 750(d)

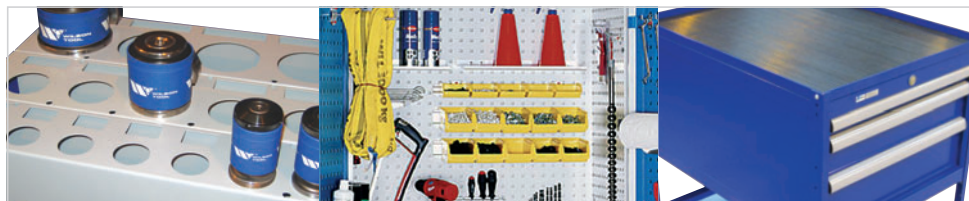
Consists of the following drawer depths: 1 x 100mm, 1 x 150mm, 2 x 250mm.

Cabinet dimensions: 900(h) x 725(d)

Cat No. **55225**

*Special delivery items. Please contact us for delivery price.

Tool Handling & Storage



Thick Turret Tool Inserts for Lista Cabinets (pages 16 – 21)*

The following tool holders are designed for Thick Turret and Trumpf tooling; provided to make your workshop even more efficient. Cabinet drawer depths must be 150mm at least for Trumpf & 250mm for turret, for a comfortable tool fit.

Description		Cat. No.	Price
For punches B ø31.8mm	7 punches	55226	
For dies and strippers B	7 dies 14 strippers	55227	
For punches C ø50.8mm	7 punches	55228	
For dies and strippers C	7 dies 14 strippers	55229	
For punches D ø88.9mm	5 punches	55230	
For dies and strippers D	5 dies 10 strippers	55231	
B Station Punch and Die	7 punches 7 dies	55232	
C Station Punch and Die	7 punches 7 dies	55233	
D Station Punch and Die	4 punches 4 dies	55234	

TRUMPF® Tool Inserts for Lista Cabinets (pages 16 – 21)*

Trumpf Strippers 0-II	8 strippers 150 x 150mm insert	55235	
Trumpf Punch/Die Large	2 punches (one with collar) 2 large dies 150 x 150mm	55236	
Trumpf Punch/Die Small	2 punches (one with collar) 3 small dies 150 x 150mm	55237	
Trumpf Punch/Die Small	2 punches (one with collar) 4 small dies 150 x 150mm	55238	
Trumpf Punch/Die Small	1 punch with collar 2 size 1 dies 150 x 75mm	55239	
Trumpf Punch/Die Large	2 punches (one with collar) 1 forming dies 150 x 150mm	55240	
Trumpf Punch/Die Large	2 punches (one with collar) 1 heavy duty die size 2 150 x 150mm	55241	
Trumpf Punch/Die Small	1 punch with collar 1 size 1 forming tool 150 x 75mm	55242	
Trumpf Punch/Die Small	1 punch with collar 1 heavy duty forming die size 2 150 x 75mm	55243	
Trumpf MT4	4 MT punch inserts & 8 MT die inserts 150 x 150mm	55244	
Trumpf MT6	6 MT punch inserts & 12 MT die inserts 150 x 150mm	55245	

*Special delivery items. Please contact us for delivery price.

Tool Handling & Storage



Drawer Cabinet*

The Listra Tool Drawer Cabinet is designed for tidy, dust proof and secure storage of your tooling. The drawers are precision built from high quality sheet steel using the latest manufacturing techniques. The cabinet drawers are made from a one-piece sides-and-base design, finished with welded front and back panels and runners.

The drawers are on precision bearings, designed to run smoothly even under maximum load. The drawer walls are slotted all round for custom division using partitioning materials. The cabinet incorporates a cylinder locking mechanism and central locking, including safety locking device.

Colour: Light Blue RAL 5012

Dimensions: 717(w) x 725(d) x 1000(h).

Consists of the following drawer depths: 1 x 200mm, 3 x 250mm, 1 x 100mm, 2 x 75mm.

Cat No. **55246**



Hinged Drawer Cupboard with Perforated Panels*

The Perforated Cabinet System is designed to help you organise your workshop / stores / plant to suit your needs. The quick location of any product or tool stored incorporates the lean manufacturing approach preferred by Wilson Tool.

The cabinet has perforations at 25mm increments, and a back panel fitted to half height with a perforated panel for hanging of tools.

The cabinet comes with two 30mm thick galvanised shelves, and doors that close flush with the housing for a neater fit. An 80mm base height gives the housing extra strength.

The shelves UDL = 45Kg. Cylinder locks with two keys.

Cat No. **55247**

Set of 18 hooks for perforated walls

Cat No. **55248**

*Special delivery items. Please contact us for delivery price.

Tool Handling & Storage



Workbench 1.5m*

This workbench is of a sturdy construction made with a beech worktop which is steam treated, waterproof glued with bevelled edges. Finished by surface planing and sealed with a biological hard wax which can resist solvents, spray water, dirt and is largely resistant to oil and grease.

Cat No. **55249**



Mobile Drawer Trolley*

The Lista Mobile Tool Drawer Trolley is designed for tidy, dust proof and secure storage of your tooling. The drawers are precision built from high quality sheet steel using the latest manufacturing techniques. The cabinet drawers are made from a one piece sides and base design, finished with welded front and back panels and runners.

The drawers are on precision bearings, designed to run smoothly even under maximum load. The drawer walls are slotted all round for custom division using partitioning materials. The cabinet incorporates a cylinder locking mechanism and central locking, including safety locking device.

The transporter is fitted with a pushing handle, and four castors (two fixed, two swivel). The trolley includes a retainer mat on the top.

Colour: Light Blue RAL 5012

Dimensions: 564 (w) x 725 (d) x 972 (h)

Consists of the following drawer depths: 1 x 50mm, 1 x 100mm, 1 x 150mm.

Cat No. **55250**

*Special delivery items. Please contact us for delivery price.

Tool Handling & Storage



Mobile Drawer Trolley*

The Lista Mobile Tool Drawer Trolley is designed for tidy, dust proof and secure storage of your tooling. The drawers are precision built from high quality sheet steel using the latest manufacturing techniques. The cabinet drawers are made from a one piece sides and base design, finished with welded front and back panels and runners.

The drawers are on precision bearings, designed to run smoothly even under maximum load. The drawer walls are slotted all round for custom division using partitioning materials. The cabinet incorporates a cylinder locking mechanism and central locking, including safety locking device.

The transporter is fitted with a pushing handle, and four castors (two fixed, two swivel). The trolley includes a retainer mat on the top.

Colour: Light Blue RAL 5012

Dimensions: 564 (w) x 725 (d) x 972 (h)

Consists of the following drawer depths: 2 x 150mm, 1 x 250mm, 2 x 75mm.

Heavy duty locking drawer.

Cat No. **55251**



Hinged Door Cupboard*

The Lista high quality Cabinet System is designed to help you organise your workshop / stores / plant to suit your needs.

The cabinet system has interior fittings at 25mm increments and four 30mm thick galvanised shelves. The doors close flush with the housing for a neater fit. An 80mm base height gives the housing extra strength.

The shelves UDL = 45Kg. Cylinder locks with two keys.

Cat No. **55252**

*Special delivery items. Please contact us for delivery price.

www.wilsonstool.com



Tool Handling & Storage



Computer Cabinet*

The dirty environment of the workshop will take its toll on computer equipment. To prevent this Lista have developed this computer cabinet to secure and protect from the workshop elements.

Complete with: a rear opening cover; monitor door with window and hinged upwards; adjustable shelf in monitor compartment; central locking through keyboard flap or separately lockable lower door including cylinder lock; keyboard pull-out with stopping point; socket strip mounting.

The cabinet is already wired up to accommodate up to four sockets, which should be ample for a PC. The cabinet is fitted also with a built-in outside switch and fan to help protect against overheating. The whole cabinet comes with a 2 metre connecting cable.

Cat No. **55253**



Press Brake Tooling Cabinet*

- Solid steel construction
- Mobile base with heavy duty casters with rated capacity of 408 kilograms each
- Three 177mm drawers capable of holding five punches each
- Two 50.8mm drawers capable of holding five dies each
- Punches are held upright in custom steel U-channels to prevent damage to tips and mounting tongues
- Dies are separated by custom U-channels to prevent damage to V-openings
- Individual latches on all drawers
- Safety interlock to prevent the opening of more than one drawer at a time
- Full width handles with clear end caps & paper labelling strips with clear protective label covers
- Retainer top with rubber mat
- Dimensions (mm): 1067(h) x 1022(w) x 571(d)

Cat No. **90007**

*Special delivery items. Please contact us for delivery price.

Tool Assembly & Alignment



Thick Turret Assembly Fixture C & D Stations

Bench mounted aid for assembling & maintaining C & D Station Thick Turret guide assemblies.

Cat No. **24162**



Thick/Thin Turret & Strippit Nylon Vice Jaws

Tailored vice jaws to aid in the assembly & maintenance of A & B Station Thick Turret & 1 1/4" Station Thin/Strippit style punch assemblies.

Cat No. **24001**



Strippit Style 3 1/2" Assembly Fixture

Bench mounted aid for assembling & maintaining 3 1/2" Strippit style guide assemblies.

Cat No. **24161**



Trumpf Style Assembly Fixture

Bench mounted aid for assembling & maintaining 2-4-1 punch assemblies & Trumpf style tooling.

Cat No. **24182**

Tool Assembly & Alignment



Pullmax Style Assembly Fixture

Bench mounted aid for assembling & maintaining Pullmax style tool holders & punch assemblies.

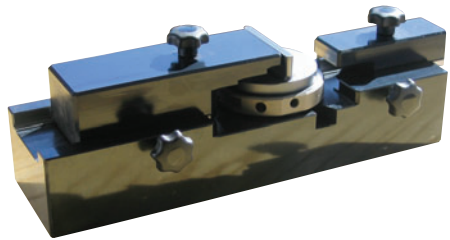
Cat No. **24183**



Spring Disassembly Tool

For use with large station guide assemblies.

Cat No. **8104**



Alignment Fixture For Trumpf Style Tooling

The alternative to the Trumpf Quick Set at a fraction of the cost!

Wilson Tool have designed a simpler setting fixture which is very accurate, very robust, yet extremely portable. The body of the fixture is precision made & durable, due to the fact that there are very few wearable or moveable parts. The fixture is also very versatile and can accommodate many types of Trumpf punches, including Size I, Size II, Minimatic style, Heavy Duty, Manual, plus those forming tools which do not have integral collars. The fixture can also be used with flat or shear punches. It is very easy to use & comes with accessories including a regrind length chart.

The quick & easy solution for setting up your Trumpf punches from Wilson Tool.

Cat No. **24186**

Punch Press Tooling Accessories



T-Handle Extractor

For large station guide assemblies.

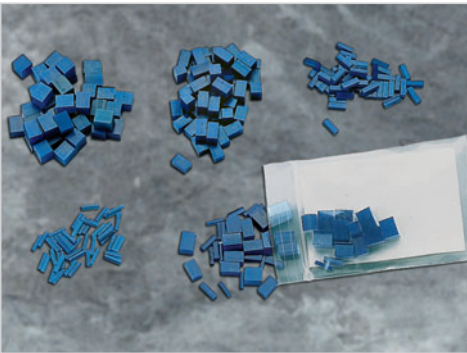
Cat No. **6483**



Zip-Mar™ Adhesive Disks

Zip Mar™ reduces the costly marring of material by the stripper. The disk is applied to the bottom of a standard stripping guide or stripper plate. A hole is then cut with a sharp knife to reveal the existing hole in the stripper.

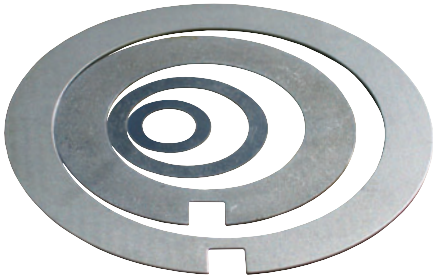
Station	Qty	Cat. No.	Price
12.7mm (A)	pk(10)	6083	
31.75mm (B)	pk(10)	6084	
50.8mm (C)	pk(10)	6085	
88.9mm (D)	pk(10)	6086	
114.3mm (E)	pk(10)	6087	
15.2 x 30.5cm Sheet	1	6108	



Slug Ejectors

Hole Dia. In Punch	Qty	Cat. No.	Price
3.2mm	50	6116	
4.8mm	50	6117	
9.5mm	50	6118	
12.7mm	50	6119	
Assortment	50	6410	

Punch Press Tooling Accessories



Thin Turret/Strippit/FAB Die Shims

1-1/4" Station

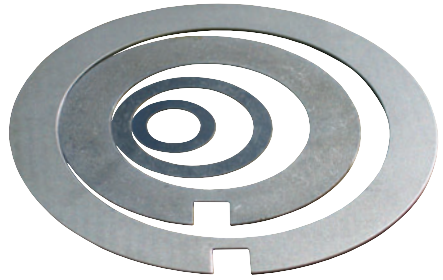
Thickness (mm)	Qty	Cat. No.	Price
0.25	1	2097	
0.25	25	2209	
0.75	1	2723	
0.75	25	2724	
1.5	1	2100	
1.5	25	2173	

3-1/2" Station

Thickness (mm)	Qty	Cat. No.	Price
0.25	1	2081	
0.25	5	2211	
0.75	1	2727	
0.75	5	2728	
1.5	1	2084	
1.5	5	2175	

3-1/2" 8 Station MT

Thickness (mm)	Qty	Cat. No.	Price
0.76	1	6200	
0.25	1	6199	
0.25	15	6813	
0.75	15	6814	



Thick Turret Die Shims

A Station Die

Thickness (mm)	Qty	Cat. No.	Price
0.25	1	2101	
0.25	25	2208	
0.75	1	2721	
0.75	25	2722	
1.5	1	2104	
1.5	25	2172	

B Station Die

Thickness (mm)	Qty	Cat. No.	Price
0.25	1	2097	
0.25	25	2209	
0.75	1	2723	
0.75	25	2724	
1.5	1	2100	
1.5	25	2173	

C Station Die

Thickness (mm)	Qty	Cat. No.	Price
0.25	1	2089	
0.25	10	2210	
0.75	1	2725	
0.75	10	2726	
1.5	1	2092	
1.5	10	2174	

Punch Press Tooling Accessories

Thick Turret Die Shims cont.

DuraDie – Standard C Station

Package Description	Cat. No.	Price
2x1mm, 2x0.5mm, 1x0.4mm, 1x0.3mm, 2x0.1mm	12995	

DuraDie – Heavy Duty C Station

Package Description	Cat. No.	Price
2x1mm, 2x0.5mm, 1x0.4mm, 1x0.3mm, 2x0.1mm	12994	

D Station

Thickness (mm)	Qty	Cat. No.	Price
0.25	1	2081	
0.25	5	2211	
0.75	1	2727	
0.75	5	2728	
1.5	1	2084	
1.5	5	2175	

DuraDie – Standard D Station

Package Description	Cat. No.	Price
2x1mm, 2x0.5mm, 1x0.4mm, 1x0.3mm, 2x0.1mm	13012	

DuraDie – Heavy Duty D Station

Package Description	Cat. No.	Price
2x1mm, 2x0.5mm, 1x0.4mm, 1x0.3mm, 2x0.1mm	13011	

Thick Turret Die Shims cont.

E Station

Thickness (mm)	Qty	Cat. No.	Price
0.25	1	2073	
0.25	5	2212	
0.75	1	2729	
0.75	5	2730	
1.5	1	2076	
1.5	5	2176	

DuraDie – Standard E Station

Package Description	Cat. No.	Price
2x1mm, 2x0.5mm, 1x0.4mm, 1x0.3mm, 2x0.1mm	13017	

DuraDie – Heavy Duty E Station

Package Description	Cat. No.	Price
2x1mm, 2x0.5mm, 1x0.4mm, 1x0.3mm, 2x0.1mm	13020	

Finn-Power Multi-Tool Die Shims MT 12 & 20 – 8 (ROUND)

Thickness (mm)	Qty	Cat. No.	Price
0.25	1	6802	
0.25	15	6817	
0.76	1	6803	
0.76	15	6818	

MT 12 & 20 – 8 (SHAPE)

Thickness (mm)	Qty	Cat. No.	Price
0.25	1	6804	
0.25	15	6819	
0.76	1	6805	
0.76	15	6820	

Punch Press Tooling Accessories

Thick Turret Die Shims cont.

MT 6 & 10 – 16

Thickness (mm)	Qty	Cat. No.	Price
0.25	1	6806	
0.25	15	6821	
0.25	1	6807	
0.25	15	6822	

MT 6 & 8 – 24

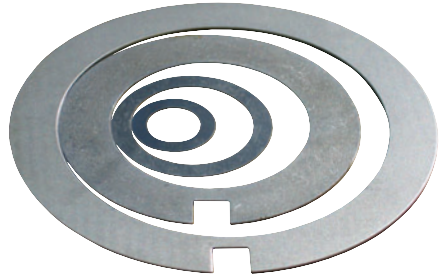
Thickness (mm)	Qty	Cat. No.	Price
0.25	1	6808	
0.25	15	6823	
0.76	1	6809	
0.76	15	6824	

Thick 1-1/4" MT 5

Thickness (mm)	Qty	Cat. No.	Price
0.25	1	6810	
0.76	1	6811	

MT 8i-16

Thickness (mm)	Qty	Cat. No.	Price
0.25	1	6800	
0.25	15	6815	
0.76	1	6801	
0.76	15	6816	



Trumpf Size 1 & 2 Die Shims

Size 1 Die

Station	Qty	Cat. No.	Price
0.1	1	25299	
0.3	1	25300	
0.5	1	25301	
Pack Description		Cat. No.	Price
2x0.1mm, 1x0.3mm, 1x0.5mm		25181	

Size 2 Die

Station	Qty	Cat. No.	Price
0.1	1	25296	
0.3	1	25297	
0.5	1	25298	
Pack Description		Cat. No.	Price
2x0.1mm, 1x0.3mm, 1x0.5mm		25182	

Punch Press Tooling Accessories

Trumpf Size 2-4-1 Die Blade Shims

241 Die Blade – 0-40mm

Package Description	Cat. No.	Price
1x1mm, 2x0.5mm, 1x0.4mm, 1x0.3mm, 2x 0.1mm	25983	

241 Die Blade – 40-56mm

Package Description	Cat. No.	Price
1x1mm, 2x0.5mm, 1x 0.4mm, 1x0.3mm, 2x 0.1mm	25984	

241 Die Blade – 40-56mm – Heavy Duty

Package Description	Cat. No.	Price
1x1mm, 2x0.5mm, 1x 0.4mm, 1x0.3mm, 2x 0.1mm	25992-S	

Trumpf Multi-Tool Die Shims

4 station Multi-Tool Die

Package Description	Cat. No.	Price
2x0.1mm, 1x0.3mm, 1x0.5mm	25389	

5 station Multi-Tool Die

Package Description	Cat. No.	Price
2x0.1mm, 1x0.3mm, 1x0.5mm	26003	

6 station Multi-Tool Die

Package Description	Cat. No.	Price
2x0.1mm, 1x0.3mm 2x0.5mm	25388	

10 station Multi-Tool Die

Package Description	Cat. No.	Price
2x0.1mm 1x0.3mm, 1x 0.5mm	25995	

Trumpf Slitting/Parting Tool Die Shims

Slitting Tool Die – 2 Piece Die Blade

Thickness (mm)	Qty	Cat. No.	Price
0.3mm	1	25185	

Parting Tool Sizes 30 x 5mm and 56 x 5mm
Die – 1 Piece Die Blade

Package Description	Cat. No.	Price
1x0.5mm, 1x0.3mm, 1x0.2mm		

Punch Press Tooling Accessories

▶ Trumph Brushed Die Shims		
▶ 10mm Brush Insert		
Package Description	Cat. No.	Price
1x0.1mm, 1x0.3mm	25927	
▶ 15mm Brush Insert		
Package Description	Cat. No.	Price
1x0.1mm, 1x0.3mm	25928	
▶ 24mm Brush Insert		
Package Description	Cat. No.	Price
1x0.1mm, 1x0.3mm	25929	
▶ Ring Brush		
Package Description	Cat. No.	Price
1x1mm, 2x0.5mm, 2x0.1mm	25948	

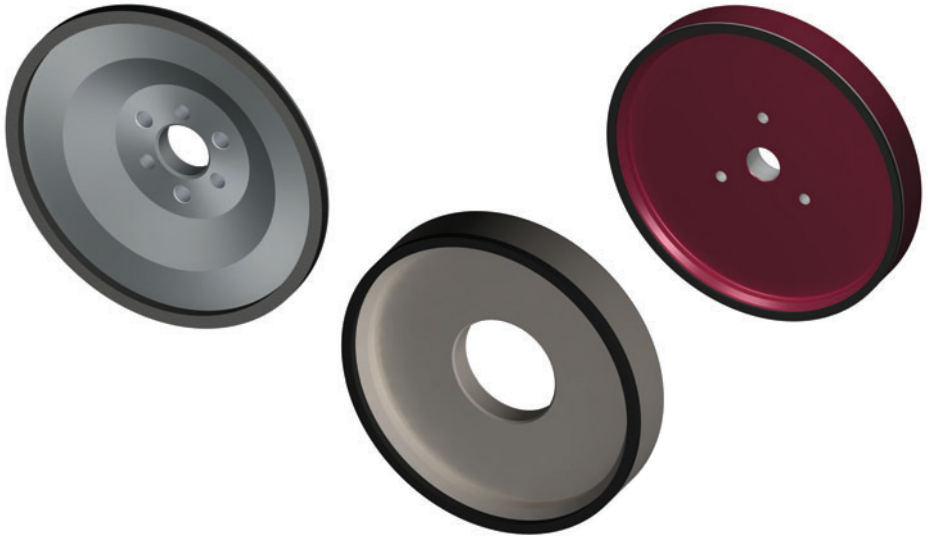


▶ Demagnetiser

When a punch & die have been re-ground they will retain a certain amount of magnetism after being held by a magnetic chuck. Subsequent operations may necessitate the efficient demagnetising of these parts & the Wilson Tool demagnetiser will prove invaluable for this purpose.

▶ Cat No. **24304**

Punch Press Tooling Accessories



Replacement CBN Grinding Wheels

Now available from Wilson Tool – replacement CBN grinding wheels for the popular tool grinding machines. Available from stock and with the usual Wilson Tool quality and precision.

Description	Cat. No.	Price
Replacement grinding wheel for Wilson X-Sharp	55109	
Replacement grinding wheel for Amada Togu EU	55119	
Replacement grinding wheel for Trumpf Quicksharp	55118	

Punch Press Tooling Accessories



X-Sharp Grinder

The Wilson X-Sharp grinder is an absolutely unique & innovative automated punch & die grinding machine, designed with the objective of simplifying the process of sharpening punch press tools.

Fully Automated Grinding Process

The regrind process on the X-Sharp is fully automated & can be operated by a user with no grinding experience. After mounting the tool in the chuck, the operator simply selects the tool size & how much to regrind, flicks the toggle switch to close the safety cover & then presses the start button. The operator is then free to return to other production tasks. When sharpening is complete, the machine returns to its original position & switches off.

Precision

The X-Sharp uses an AC-servomotor driving a precision gear & ball screw along with dual linear guides & four carriers to provide highly stable bearing properties. This ensures a high level of precision & an excellent quality of surface finish on your sharpened tools, thus ensuring the maximum return on your investment.



Punch Press Tooling Accessories

Automated Height Detection

The X-Sharp automatically measures the height of any tool mounted in the chuck before the grinding cycle begins. This also means that no manual adjustments are required to compensate for grinding wheel wear.

Shear Grinding

Punches with shears can also be sharpened using the X-Sharp shear grinding chuck.

Coolant

The X-Sharp is equipped with a powerful closed coolant system, ensuring the tool is constantly flooded with coolant during the grinding process. This prevents burning & surface cracking, improving the quality of the grind & helping to maximise your tool life by giving you a factory sharp edge every time.

Frame

The machine has a heavy-duty welded frame, stress relieved prior to machining. This gives the X-Sharp superior frame stability, a fundamental requirement for professional quality grinding.

Interlocking Safety Guard

The X-Sharp is equipped with a pneumatic, interlocking safety guard that opens & closes with a toggle switch. The guard encloses the entire grinding area to protect the health & safety of the operator.

Grinding Space

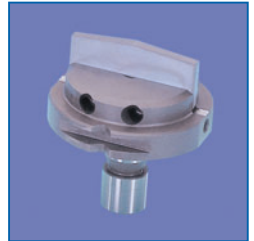
With a unique design of safety guard, the grinding space on the X-Sharp is easily accessible from three sides. This makes the loading & unloading of tools quick & easy, & allows straightforward access for cleaning.

Footprint

The X-Sharp was designed with the smallest footprint in the industry, so the machine can easily be placed next to the punch press. With the automation features of the X-Sharp, the operator can continue to use the punch press while a tool is being sharpened.

Special delivery item.
Please contact us for delivery price.

Contact the sales desk for more information



Punch Press Tooling Accessories



Shear Grinding Fixture

With your large investment in tooling, why not get the most life out of it, & reduce your tooling costs with the finest re-grinding?

The winning combination of the Wilson Tool grinding fixture & a surface grinder gives you not only the advantage of re-sharpening your tools the same way as Wilson Tool, but you also have these advantages:

- Easy to adjust angle setting for shear grinding.
- Ability to resharpen punches without full disassembly of punch assemblies.
- No need to buy a dedicated piece of machinery just for re-sharpening. The surface grinder can be used for many other applications.
- Easy to use instruction sheet with grinding tips.

Cat No. **6034**

For FAB & Thin Turret Tooling

Description	Cat.No.	Price
5/8" Tooling Sleeve Adapter	6046	
B Station Tooling Punch & Die Adapter	6044	
D Station Tooling Punch Holder	6041	
C & D Station Full Body Tooling	6039	
Universal Notch Punch Holder	6071	

For Thick Turret Tooling

Description	Cat. No.	Price
A Station Tooling Sleeve Adapter	6043	
A Station Die Adapter	6088	
B Station Tooling Punch & Die Adapter	6042	
C, D & E Station "Old Style" Punch Holder	6039	
"Series 80/90" Tooling Punch Holder	6040	
C & D Station Die Adapter	24017	
Diamond Holder & Diamond*	24003	
Replacement Diamond for 24003	24004	

*B Station Tooling Adapter Required

For Trumpf Style Tooling

Description	Cat. No.	Price
Punch Holder	6089	
Die, size 1	25365	
Die, size 2	25366	
Multi-Tool Punch (MT-6)**	25303	
Multi-Tool Die (MT-6)**	25305	
Multi-Tool Punch (MT-4)**	25302	
Multi-Tool Die (MT-4)**	25304	
Multi-Tool Punch (MT-5)**	25935	
Multi-Tool Die (MT-5)**	25936	
Pullmax Style Orbit Punch**	62124	
Pullmax Style Orbit Die**	62125	

**Trumpf Punch Adapter Required

Punch Press Machine Accessories



Alignment Tools for Amada® Single Track Machines

Station	Upper Unit		Lower Unit	
	Cat.No.	Price	Cat.No.	Price
12.7mm (A)	2597		2598	
31.75mm (B)	2599		2600	



Alignment Tools

Station	Upper Unit		Lower Unit	
	Cat.No.	Price	Cat.No.	Price
50.8mm (C)	1840		1841	
88.9mm (D)	1947		1948	
114.3mm (E)	1949		1950	
152.4mm (F)	2290		2291	

In order to align A & B Stations, you need one or two tools for each station size, depending on the type of machine. For a single track turret, one tool is required to align each station. For a multiple track machine, two tools are required to align each station (one in the front of the station and one in the back).



Alignment Tools for Amada® Multiple Track Machines

*NOTE: Two of each Cat. No. required

Station	Cat. No.	Price
12.7mm (A)	2601*	
31.75mm (B)	2602*	

Punch Press Machine Accessories



Ball Riding Die

The "Ball Riding Die" which consists of a spring loaded ball, has been designed to help eliminate several problems. The most common problems result from the higher height of the form-up dies.

These problems are:

- Sheet hang-up from the material running into a higher die, such as a forming tool.
- Sheet deformation from punching next to dies of different heights.
- Damage to forming die inserts when the die cap receives uneven loading during punching in neighbouring stations.

To reduce sheet & tool damage in forming applications, two of these dies are placed in stations surrounding the forming tool. When the sheet approaches the form-up die, it is lifted by the ball riding die. When the forming operation begins, the ball in the surrounding die recesses with the sheet. Once the form has been achieved & the tool strips, the spring loaded balls lift the sheet back to its original height. This allows the sheet to move more freely through the turret, avoiding collisions with the form-up tool.

Placing these dies into the vacant stations on a turret loaded on one side can also eliminate material crashes.

Station	Cat. No.	Price
12.7mm (A)	2375	
31.75mm (B)	482	
50.8mm (C)	101801	
88.9mm (D)	101802	
114.3mm (E)	101803	



Brush Die

The primary use for brush die is in applications where any marking that might be caused by ball riding dies is not acceptable

Station	Cat. No.	Price
12.7mm (A)	2760	
31.75mm (B)	2761	
50.8mm (C)	2762	
88.9mm (D)	2763	
114.3mm (E)	2764	

Punch Press Machine Accessories



Wilson Xtra Clamp Parts

You've always been able to depend on Wilson Tool for innovative, precision engineered tooling for your punch press and press brake machines. Now through Wilson Xtra, you can buy replacement Clamp Assemblies and Turret Keys for your turret punch press machine. Both are high quality, competitively priced alternatives with the following list of features and benefits:

- All clamp assemblies feature replaceable cylinders. Never again will you have to throw away a complete assembly for the sake of a worn out cylinder.
- All lower clamp and jaw assemblies are designed to be of the same size and shape of the original equipment.
- All clamps and keys meet or exceed original equipment manufacturers specifications.
- When possible, modular, replaceable clamp bases are used.
- Where possible, clamp assemblies feature a coarse gripping groove on the clamp plate as opposed to the fine groove found on other clamps.
- When applicable, fasteners are included with parts and assemblies at no additional charge.
- Improved clamping is achieved through the use of 45 degree grooves on the clamp plate and clammer as opposed to straight line grooves.

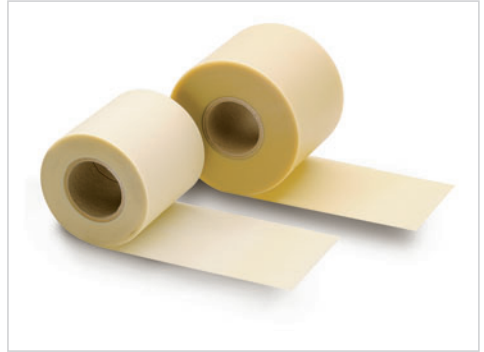
Contact Wilson Tool now for your copy of our new Wilson Xtra Clamp Parts catalogue.

Press Brake Tooling Accessories



Express Clamp Torque Wrench Kit

Component	Cat. No.	Price
Complete Kit	8002	
Case	8003	
Pivots	43726	
Wrench	6793	
Hex Tips	6795	



Urethane Rolls

Urethane Rolls for mark-free bending. Urethane dies are also available. Contact the sales desk for prices & lead times.

Dimensions	Cat. No.	Price
0.4 x 152mm x 30m	42530	
0.8 x 152mm x 30m	42531	

Press Brake Machine Accessories



Side Gauge

Intended for use with Quick Change, 2V, Sectionalized 2V & Quick Change 1V dies.

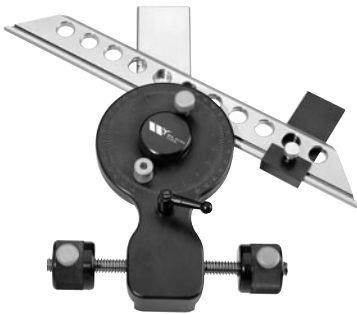
Cat No. **42701**



1V Die Stabilizer

Fits to guide rail to support short sections of Quick Change 1V dies.

Cat No. **42704**



Side Gauge & Protractor Assembly

Locates on V for setting variable forming angles. Includes case.

Cat No. **42702**



2V Die Stabilizer

Fits to guide rail to support short sections of Quick Change 2V dies.

Cat No. **42705**

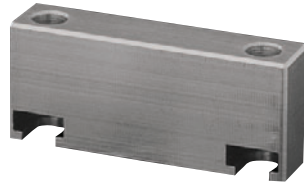
Press Brake Machine Accessories



Adjustable Back Gauge Stopper Plate

For non-CNC machines. For use on the 'Amada NC9EX back gauge system'. Helpful in conjunction with side gauge and protractor. (See product on page 39, Cat No. 42702.)

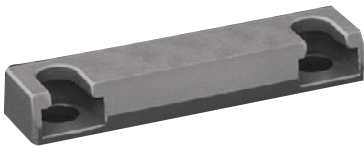
Cat No. **42703**



Reworkable Pad

Machinable stopper pad for parts that interfere with your standard stopper pads. Designed for use on the 'Amada NC9EX back gauge system'.

Cat No. **42712**



Replaces Original Pad

Replacement stopper pad with added quick change feature for faster machine set-up. Designed for use on the 'Amada NC9EX back gauge system'.

Cat No. **42707**

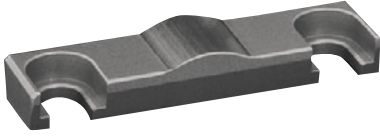


Sheet Support Pad

Helps stabilize parts made out of thin material or parts with a very long flange. Simply rest the end of your flange on the corner of the L-shaped back gauge pad & it will help support your part while you are bending. Designed for use on the 'Amada NC9EX back gauge system'.

Cat No. **42708**

Press Brake Machine Accessories



Single Point Pad

For use on a sheet that has been nibbled, scalloped or has an irregular shape. Gives minimal contact with the edge of the sheet to help provide a single point of reference on an irregular shape. Designed for use on the 'Amada NC9EX back gauge system'.

Cat No. **42709**



Distribuitor:



S.C. SM TECH SRL

Tehnologii și soluții pentru industria prelucrării tablelor

Tel: 0040-331-401599

Tel/Fax: 0040-231-515702

Tel Mob: 0040-745-528494

E-mail: info@sm-tech.ro

www.sm-tech.ro

www.wilsontool.ro

Vă stăm la dispoziție cu plăcere cu orice informație sau ofertă pentru scule
Wilson Tool destinate mașinii d-voastră de ștantat CNC

