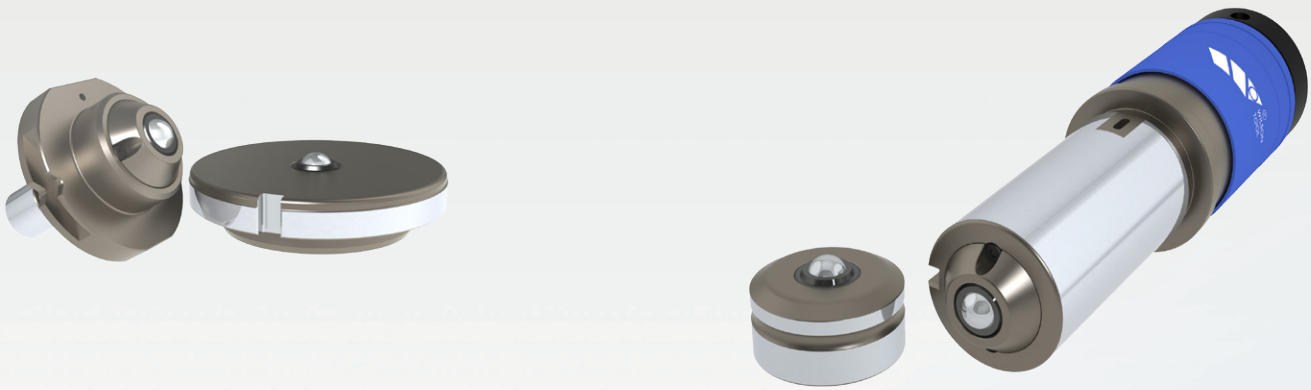


## WILSON DE-BURRING TOOL

Use the NEW Wilson De-burring Tool to accurately de-burr sharp edges in straight lines or arcs. Thanks to a more durable ball re-circulating system within the ball unit itself, these new units have proved to be much more durable in the more challenging materials such as stainless and galvanised material.

Available in Trumpf Style, Thick Turret and Thin/Fab Style Tooling



### Benefits/Specifications:

- De-burr directly on your punch press, eliminating expensive, secondary de-burring operations.
- Single tool to de-burr in straight lines or arcs, including acute angles and small radii.
- High speed to slash manufacturing times.
- Can be used on components secured using micro-joints
- Ball-assembly pressure can be adjusted without disassembly of tool.
- For use in materials upto 6mm thick

DESCRIPTION	CAT. NO. TRUMPF®	CAT. NO THICK TURRET PROGRAMMABLE RAM	CAT. NO THICK TURRET MECHANICAL RAM	CAT. NO. FAB
Complete Tool	26846	14234	14240	10687
Punch Assembly	26847	14235	14241	10679
Die Assembly	26848	14236	14236	14236
Replacement Ball Assembly (1-off)*	26849	26849	26849	26849

\*Note: For use in Punch Assembly or Die Assembly