



Size 0



Size I & II



Urethane Stripper



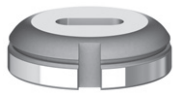
Group H & I Stripper



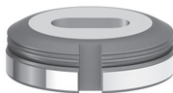
Polyamide Coated Group H & I Stripper



Group E, F & G Stripper



GL Die



Standard Die

PUNCH	Flat		Whisper Shear		Long Flat*		Optima® Add-on	
	SIZE	'A' DIMENSION	CAT. NO.	PRICE	CAT. NO.	PRICE		CAT. NO.
0	01.50 - 06.00 mm	25022			-		25743	
0	06.01 - 10.50 mm	25023			-		25747	
I	01.50 - 10.50 mm	25026			-		25751	
I	10.51 - 30.00 mm	25026			25063		25751	
II	30.01 - 40.00 mm	25039			25065		25755	
II	40.01 - 50.00 mm	25040			25066		25759	
II	50.01 - 76.20 mm	25001			25067		25763	
III	76.21 - 105.00 mm	25025			25068		-	

URETHANE STRIPPER		Flat		Shear & Long*	
'A' DIMENSION	CAT. NO.	PRICE	CAT. NO.	PRICE	
0 - 30.00 mm	26824		26825		

STRIPPER		GROUP H & I		Group E, F & G	
SIZE	'A' DIMENSION	CAT. NO.	PRICE	CAT. NO.	PRICE
I & II	0 - 76.20 mm	25359		25028	
III	0 - 105.00 mm	-		25062	

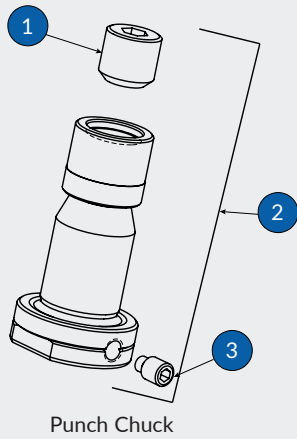
POLYAMIDE COATED STRIPPER		GROUP H & I	
DESCRIPTION	CAT. NO.	PRICE	
I & II	0 - 76.20 mm	26854	

DIE SHIM - SINGLE				DIE SHIM - PACKAGE		
SIZE	STATION	CAT. NO.	PRICE	DESCRIPTION	CAT. NO.	PRICE
I	0.1 mm	25299				
I	0.3 mm	25300			25181	
I	0.5 mm	25301		2 x 0.1 mm, 1 x 0.3 mm, 1 x 0.5 mm		
II	0.1 mm	25296				
II	0.3 mm	25297			25182	
II	0.5 mm	25298				

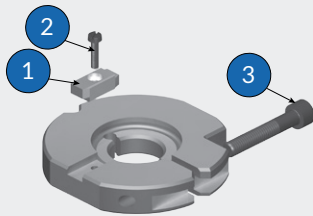
GL DIE			
SIZE	'A' DIMENSION	CAT. NO.	PRICE
I	0 - 30.00 mm	26740	
II	30.01 - 76.20 mm	26726	

STANDARD DIE			
SIZE	'A' DIMENSION	CAT. NO.	PRICE
I	0 - 30.00 mm	25027	
II	30.01 - 76.20 mm	25000	
III	76.21 - 105.00 mm	25059	

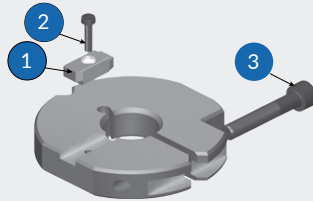
DESCRIPTION	'A' DIMENSION	NOTES
Our Trumpf® style standard tooling is manufactured with high-speed tool steel for greater precision. And with Wilson's Trumpf® "GL" dies and die plate, you can increase your grind life up to 150%.		<p>Group H, I and rotation machines have 1 die slot as standard. All other machines have 2 die slots as standard.</p> <p>Size III tooling only for groups E, F & G machines.</p> <p>* Long Flat Punches for Group I machines.</p>



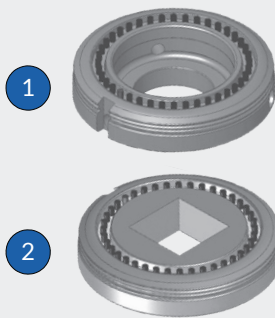
Punch Chuck



Alignment Collar Size I



Alignment Collar Size II & III



Brushed Dies

PUNCH CHUCKS

	DESCRIPTION	SIZE	CAT. NO.	PRICE
2	Complete Assembly	0 - 6.00 mm	25010	
2	Complete Assembly	6.01 - 10.50 mm	25021	
1	Socket Set Screw		25212	
3	Socket Set Screw	0 - 6.00 mm	971053	
3	Socket Set Screw	6.01 - 10.50 mm	25213	

ALIGNMENT COLLAR - SIZE I

	DESCRIPTION	CAT. NO.	PRICE
	Alignment Collar	25018	
1	Spare Collar Key	25019	
2	Cheese Head Screw	25215	
3	Collar Locking Screw	25214	

ALIGNMENT COLLAR - SIZE II & III

	DESCRIPTION	CAT. NO.	PRICE
	Alignment Collar	25139	
1	Spare Collar Key	25019	
2	Cheese Head Screw	25215	
3	Collar Locking Screw	25214	

BRUSH DIES

	DESCRIPTION	CAT. NO.	PRICE
1	Size 1 to 2 Brush Die Adapter	25939	
	Brush Ring Insert	25945	
	Brush Ring Shim Pack	25948	
2	Size 2 Brush Die [56 mm max. 'A' Dim.]	26025	

26 STANDARD SHAPES

