

THICK TURRET SPECIAL TOOLING

Scule speciale si de deformare pentru masini de stantat CNC cu turela
(thick turret)

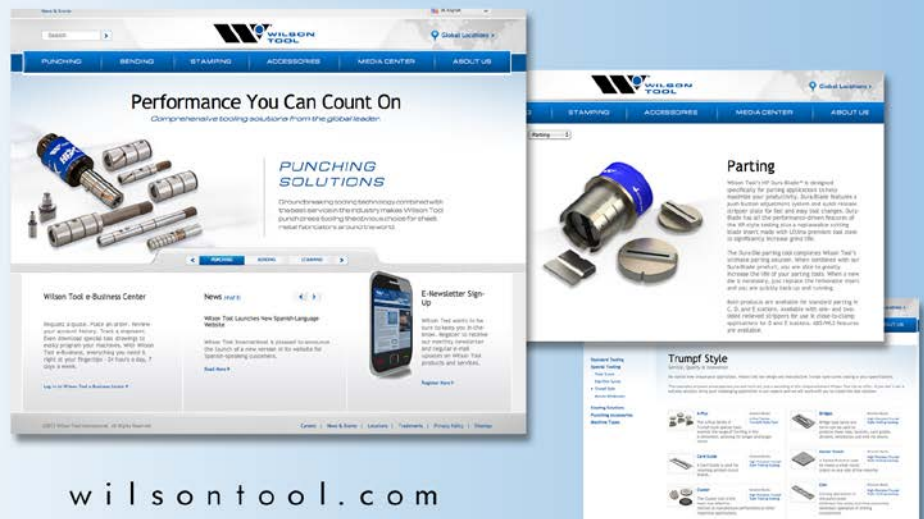


Terms and Conditions

Order	Minimum order is £35.00 / 55,00 €
Credit	All orders are subject to the approval of our credit department. If you are a new account, please furnish us with a bank reference and three supplier references. A credit limit will be imposed on new accounts until credit has been established.
Payment	Terms are net 30 days.
Cancellation	In the event an order is cancelled, a charge will be made to cover labour, materials and overheads.
Returned Material	A handling charge of 25% is made on all standard parts returned for credit. Written permission and shipping instructions must be obtained before the return of any material. Special tooling cannot be returned.
Claims	All claims for shortages must be made within 3 days of the invoice date.
Prices	Prices and specifications subject to change without prior notice. E & OE. All prices are exclusive of VAT.
Delivery Charge	All tooling orders are subject to a minimum freight and packaging charge of

CONNECT WITH WILSON TOOL

wilsontool.com is your online source for the latest news and information from Wilson Tool. Available in seven languages, **wilsontool.com** is a great resource for all of our customers around the globe.



wilsontool.com



Our e-newsletters not only keep you up to date on the latest product and company news along with workshop and class information, but each month we provide a solutions-based article to improve performance and productivity in your shop. Register at **wilsontool.com**

Monthly Newsletters



UK
Ireland

Tel (Free): 0800 373 748
Tel (Free): 1-800 709 009

Fax (Free): 0800 373 758
Fax (Free): 1-800 535 538

email: sales@wilsontool.eu.com

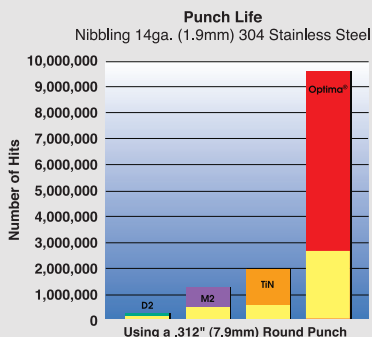
Improve Wear Resistance with Optima®

Every Wilson Thick Turret Special Tool is available with Wilson's exclusive Optima® coating. Developed by Wilson engineers, Optima provides a surface hardness, wear resistance and lubricity unmatched by any other coated or uncoated turret punch press tooling. The result is longer tool life, more hits between sharpenings, reduced galling, better performance and less downtime.

Wilson HP™ Thick Turret tooling: Loaded with value.

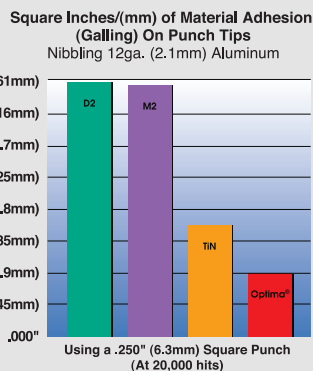
- Longer tool life
- Increased wear resistance
- More hits between sharpenings
- Reduced adhesion (galling)
- Reduced slug pulling
- Reduced corner breakdown
- Improved special tooling performance
- Lower overall tooling costs

Punch Life

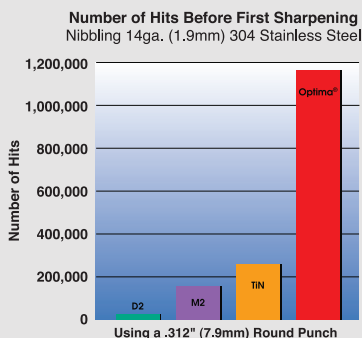


The yellow area indicates actual results achieved through three tool sharpenings of 0.25mm each. The complete graph indicates projected results with a total of 6mm removed for sharpening.

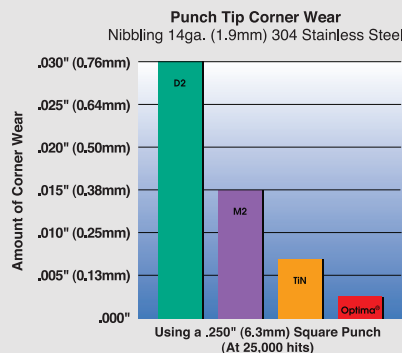
Material Adhesion



Number of Hits



Tip Wear



Terms and Conditions	2
----------------------	---

COIN

Coining Form-Down / Form-Up	4
-----------------------------	---

FORM

Card Guide Form-Up	5
Emboss Form-Down/Form-Up	6
Extrusion	7
Hinge Tools	8
Progressive Rib	9
Rollover Tools	10

LANCE & FORM

Bridge Form-Up	11
EKO's Form-Up/Form-Down	12
Half Shear / Rooftop Half Shear	13
Scrape Locator	14
Lance & Forms	15
Louvres / Progressive Louvres	16-17
Thread Form	18
Thread Loop	19

PIERCE

Cluster	20
---------	----

SHEET MARKING

ID Stamp	21
Letter Stamps Form-Up/Form-Down	22
Multi-Scribe Tool	23
Stamping	24

SPECIALITY

De-Burring	25
Forming Stations	26
Opti-Bend	27
Tapping Tool	28
ZipTech	29

WHEEL

Wilson Wheel Family	30
---------------------	----

ACCESSORIES

Light Springs	31
E-Z Set Punch Head	32

SPECIAL SHAPES

Group 'A'	33-34
Group 'B'	35-37
Group 'C'	38
4-Way Radius	39



APPLICATIONS

Countersink

Countersink with counterbore

Counterbore (with hole or without hole)

Chamfered edges

Deburring

Coining operations on the punch press eliminate the costly and time-consuming secondary operation of drilling countersinks.

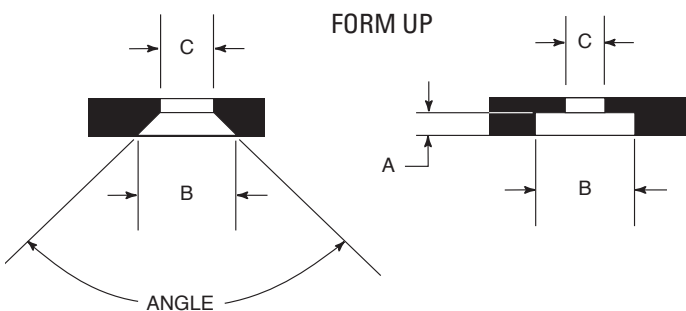
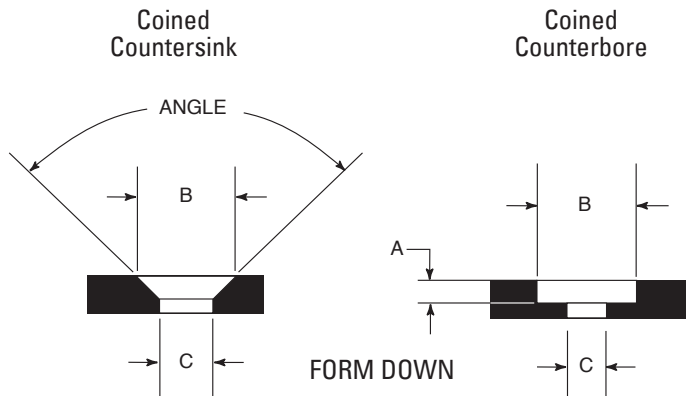
Pre-punching a hole prior to coining results in a higher quality finished form.

FEATURES

- Interchangeable tip for form down countersink allows you to easily change coin sizes and reduce tooling costs.
- The form up coin die is made self stripping.

INFORMATION NEEDED

- Machine model
- Material thickness and type
- Angle, coin diameter, through-hole
- With or without pilot
- Form-up or form-down



Estimated pre-punch formula:

$$B - [(B - C) \times .75] = \text{Pre-punch}$$

APPLICATIONS

A card guide is used for retaining printed circuit boards that require standard lead-in or special lead-in shapes.

FEATURES

- The Wilson Tool card guide has a universal holder design including a spring loaded adjusting plunger for quick and easy length adjustments without the need for shims.
- The replaceable inserts will lower your costs and allow you to convert them to different size card guides.
- Wilson Tool will estimate the web of material to be formed on all Card Guides.
- Special lead-ins available – wrap around, closed end, and angled end.
- The form is internally stripped for best results.
- Wilson Tool will develop the pre-punch shape and size on special lead-in card guides.
- Tooling is ABS/WLS ready, minimizing wear and maintenance.
- All tools are tested and inspected before shipping.

INFORMATION NEEDED

- Machine model
- Material thickness and type
- Drawing of card guide desired, centre-to-centre location and narrowest pre-punch
- Pre-punch shape: rectangle, obround, or rectangle with radius corners



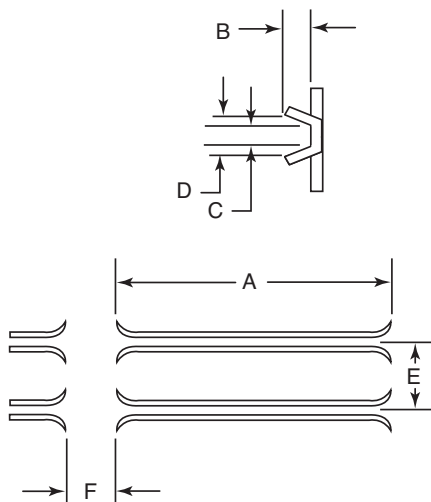
Standard



Wrap Around



Closed End





APPLICATIONS

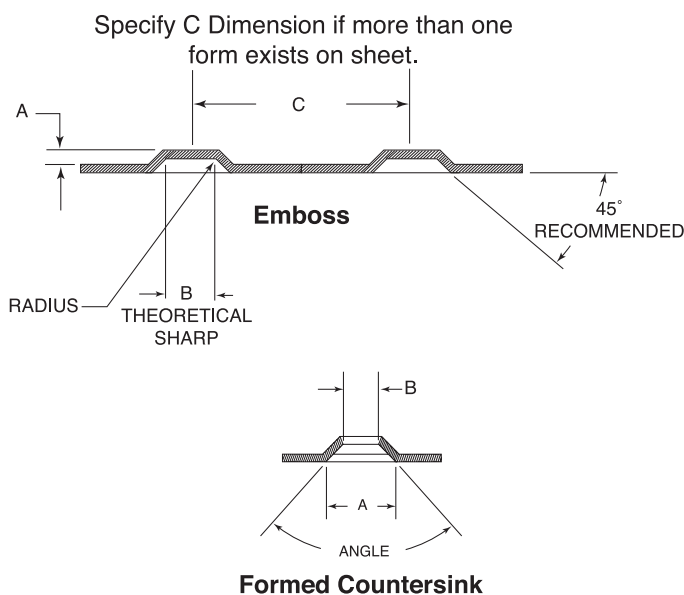
Embosses, dimples and forming tools are used to create stand-offs, spacers, countersinks, locks for nuts and logos.

FEATURES

- 1-1/4" (B) Station Emboss is a full body design to give maximum bearing area to sheet.
- Large Station is designed to fit your existing holder (punch, stripper, die assembly).
- All tools are made positive form design for a consistent high quality form.
- The form up design die is self-stripping.
- Logo embosses and other special shape embosses can be manufactured easily when an electronic file is provided.
- All tools are tested and inspected before shipping.

INFORMATION NEEDED

- Machine model
- Material thickness and type
- Drawing with dimensions (height, diameter or shape, angle, radius, through-hole, etc.
- Form-up or form-down
- Style of large station guide assembly

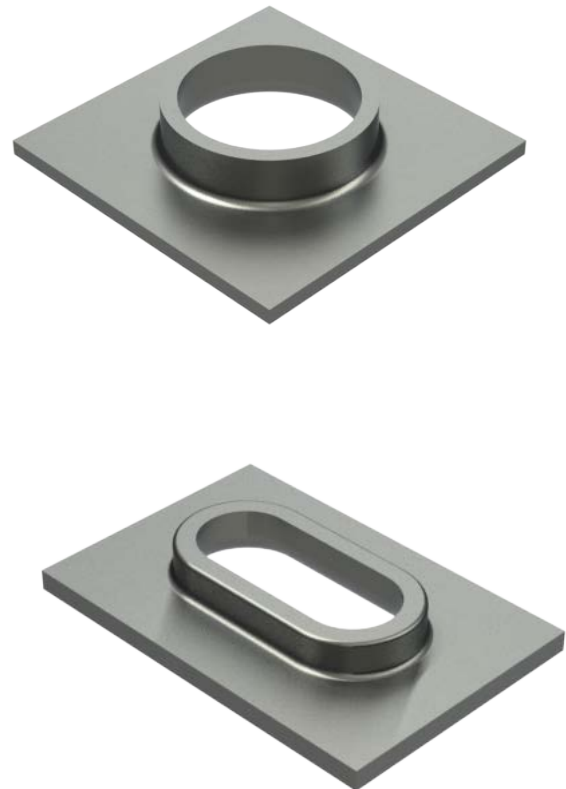


APPLICATIONS

Extrusions can be used in a broad spectrum of applications, such as self-tapping screws, cooling tube holders, air flow applications or tread plate.

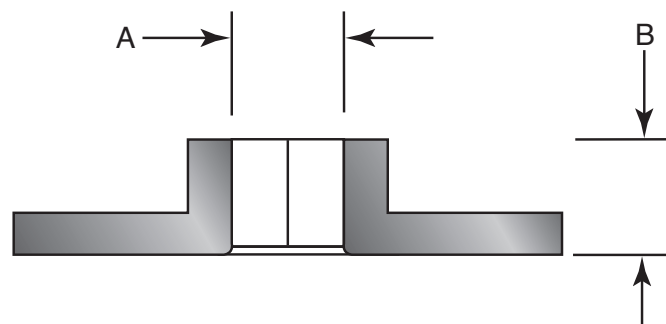
FEATURES

- Wilson Tool provides new innovative designs for a wide variety of applications so you can keep your extrusions in the 1-1/4" (B) Station.
- 1-1/4" (B) Station extrusions are made insert style for fast, easy and economical replacement.
- Upper unit provides fast and easy length adjustments.
- Form-down extrusions are made self-stripping.
- The large station universal holder provides both cost savings and flexibility; purchase only a punch tip, ejector and die assembly to change size; use the same upper holder for other applications, such as electrical knockouts and lance and forms.
- Self-stripping design for consistent, trouble-free operation.
- A wide variety of coatings are available for longer life and better stripping.
- The large station holder is ABS/WLS ready, minimizing wear and maintenance.
- All tools are tested and inspected before shipping.



INFORMATION NEEDED

- Machine model
- Material thickness and type
- I.D. and height or screw size and type
- Tolerance of I.D.
- Form-up or form-down
- Specify centre-to-centre if more than one extrusion exists on the sheet.



APPLICATIONS

Standard fully curled hinge Offset fully curled hinge One-hit half knuckle hinge

Hinge tools eliminate costly hardware, fitting and line-up assembly. Fabricate complete panels with integrated hinges. A hinge can be formed on the edge or in the middle of the sheet.

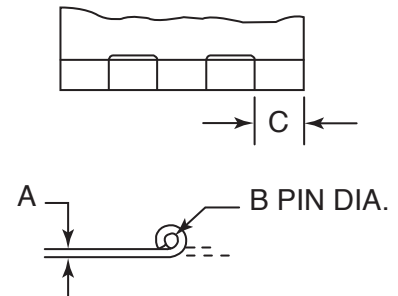
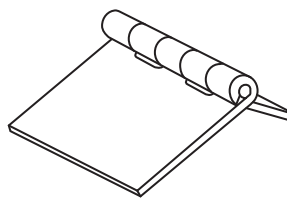
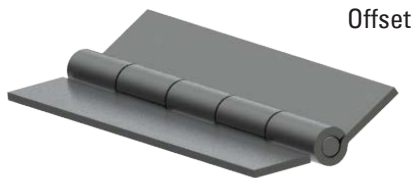
Wilson Tool's one-hit hinge tool creates multiple half-knuckles that function as hinges. In one stroke, three or more half-knuckles are formed – making this tool 900% more efficient than the traditional hinge. The one-hit hinge tool can be used for hinges requiring larger diameter pins because it does not wipe the material.

FEATURES

- A standard fully curled knuckle is achieved with two sets of tools.
- An offset fully curled hinge requires three sets of tools.
- A one-hit half knuckle hinge uses one tool to form three or more half knuckles, allowing for larger diameter pins.
- The one-hit hinge tool can be used with plastic coated materials.
- Operating instructions with developed dimensions for easy programming are included with the tools.
- All tools are tested and inspected before shipping.

INFORMATION NEEDED

- Machine model
- Material thickness and type
- Drawing with dimensions - hole diameter or pin size
- Knuckle size



APPLICATIONS

A Progressive Rib from Wilson Tool produces quality stiffening ribs, programmable to any length.

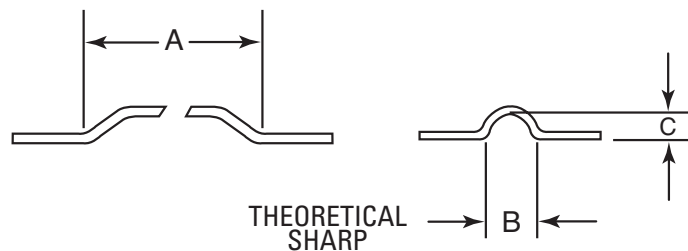
FEATURES

- Rounded or flat top ribs are available (for best results, inside radius should be equal to or greater than the height).
- Run in nibbling mode (recommended incremental moves equal to the material thickness or less).
- When changing material thicknesses, only the upper punch or punch tip is required.
- The large station universal holder provides both cost savings and flexibility; purchase only a punch tip and die to change size; use the same upper holder for other applications, such as electrical knockouts, extrusions, and lance and forms.
- Upper unit provides fast and easy length adjustments.
- The large station holder is ABS/WLS ready, minimizing wear and maintenance.
- All tools are tested and inspected before shipping.



INFORMATION NEEDED

- Machine model
- Material thickness and type
- Drawing with dimensions (B and C)
- Specify centre-to-centre if more than one form exists on the sheet.



"A" dimension programmable to any length
Standard size: B = 9.52mm
C = 4.75mm



APPLICATIONS

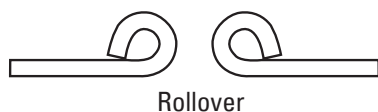
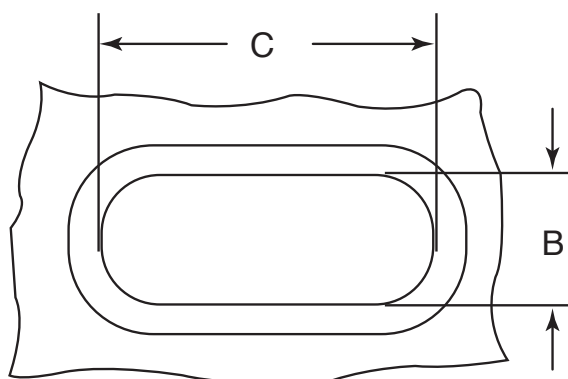
Rollover and Hemming tools can be used in many applications such as hand holds, wire feeds and grommets.

FEATURES

- Rollover is achieved in three operations:
 1. Pre-punch (developed by Wilson Tool free of charge)
 2. Form-up extrusion
 3. Rollover
- Hemming is achieved in three operations:
 1. Pre-punch (developed by Wilson Tool free of charge)
 2. Form-up extrusion
 3. Flare & Flatten
- Reduces costly secondary operations and handling.
- All tools are tested and inspected before shipping.

INFORMATION NEEDED

- Machine model
- Material thickness and type
- Diameter or length and width (opening)
- Tolerance of opening
- Application (hand hold, wire feed, etc.)
- Style of guide assembly



APPLICATIONS

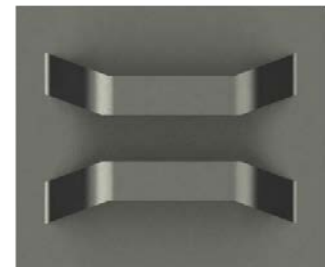
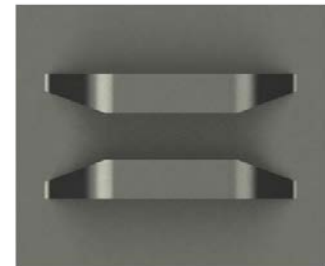
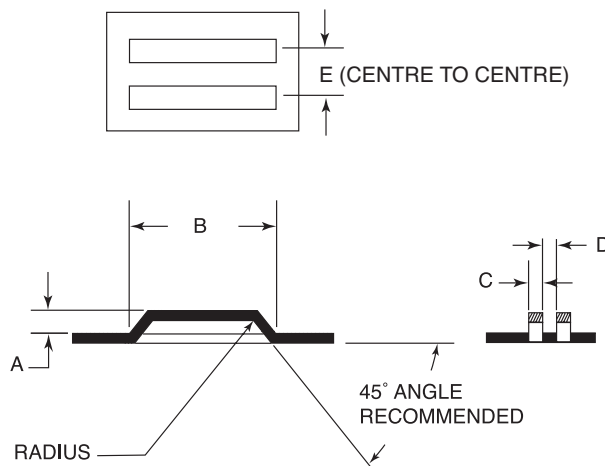
Bridge type lance and forms can be used for shear stops, locators, card guides, dividers, ventilation and wire tie downs.

FEATURES

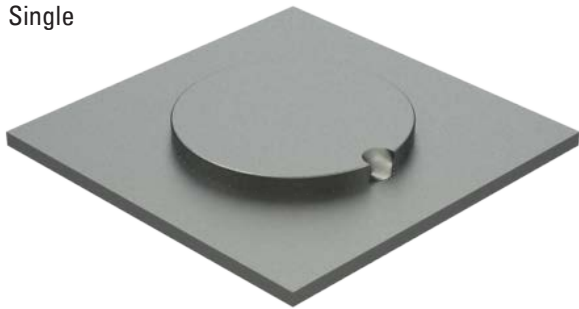
- The Wilson design gives a positive form, which ensures a high quality part.
- Small and large station holders provide both cost savings and flexibility; purchase only a punch tip, ejector and die assembly to change size; use the same upper holder for other applications.
- Special lead-ins available.
- Form-down bridges are made self-stripping.
- Optima coating available for extending tool life on widths greater than 2.5mm.
- The large station holder is ABS/WLS ready, minimizing wear and maintenance.
- All tools are tested and inspected before shipping.

INFORMATION NEEDED

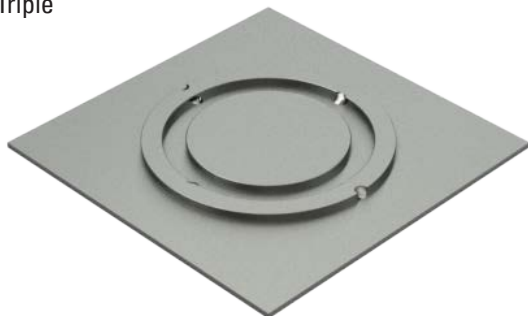
- Machine model
- Material thickness and type
- Length, width, height and centre to centre
- Drawing of pattern for relief
- Top, side and end views
- Form-up or Form-down



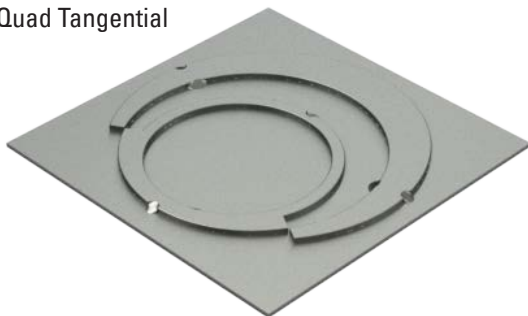
Single



Triple



Quad Tangential



APPLICATIONS

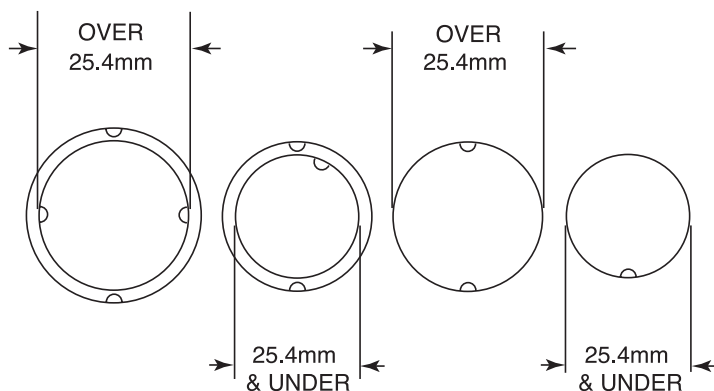
- Single
- Double (concentric or tangential)
- Triple (concentric or tangential)
- Quad (concentric or tangential)
- Standard and special shapes

Wilson Tool's Electrical Knockout (EKO) design has full stripping in both upper and lower units, which produce good quality, reliable knockouts every time. Single or multiple tools can be used to produce the desired number of EKO's for your requirements.

FEATURES

- Most EKO's can be used in a small range of material thicknesses (example: 16-14 gauge/1.5-2mm).
- Available in rounds, standard shapes and special shapes.
- The universal holder provides both cost savings and flexibility; purchase only a punch tip, ejector and die assembly to change size; use the same upper holder for other applications.
- Optima coating available for extending tool life.
- The large station holder is ABS/WLS ready, minimizing wear and maintenance.
- All tools are tested and inspected before shipping.

Standard Wilson Tool Tab Location



INFORMATION NEEDED

- Machine model
- Material thickness & type
- Actual diameter
- Specify Standard. or Special tab location & size
- Specify centre-to-centre if more than one knockout exists on the sheet

APPLICATIONS

The Half Shear from Wilson Tool is an easy-to-use tool that allows you to put in shear buttons and spot welding locators to the accuracy of your punch press. Round Half Shears make excellent locators for angular shearing. Rooftop Half Shears give you greater height protrusion compared to a standard half-shear when using thinner material.

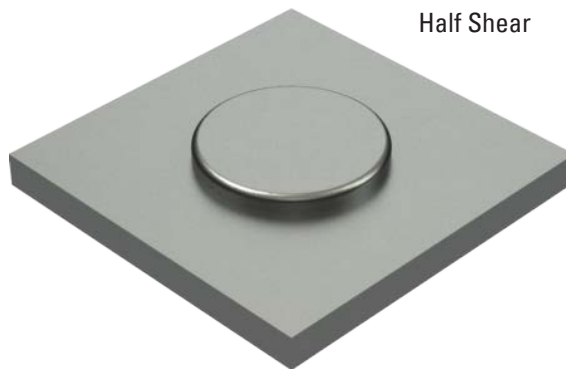
FEATURES

- Replaceable insert design up to 9.53mm diameter in lower unit of B station form-up half shear.
- Form-up half shears are available in stock sizes.
- Half shears can be used on a 3.17 mm range of material.
- Form-down and large station half shears are available.
- Rooftop half shear gives you greater height protrusion from the metal which aids in picking up the locator on the sheet.
- Rooftop half shears have approximately 3 different material thicknesses.
- All tools are tested and inspected before shipping.

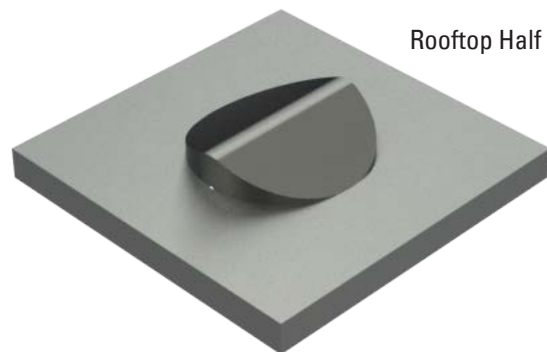
INFORMATION NEEDED

- Machine model
- Material thickness and type (or range)
- Diameter or shape (on top of sheet)
- Specify centre-to-centre if more than one exists on the sheet

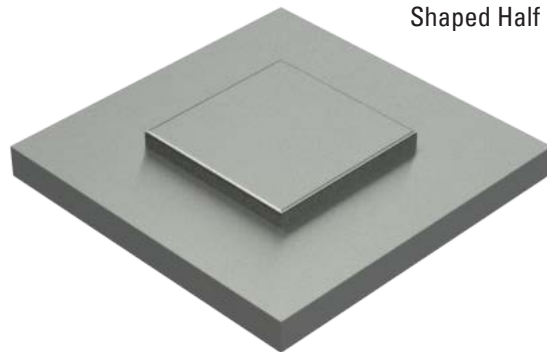
Half Shear



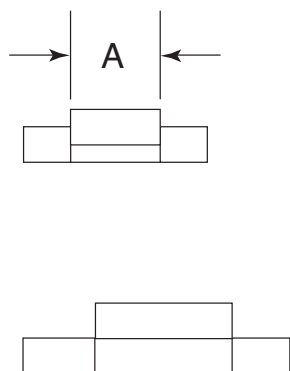
Rooftop Half Shear



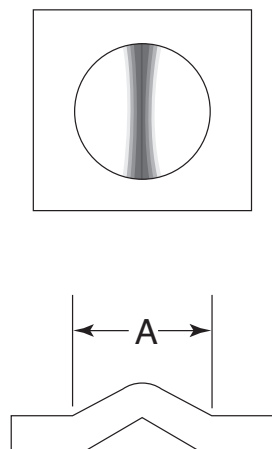
Shaped Half Shear



Half Shear



Rooftop Half Shear



APPLICATIONS

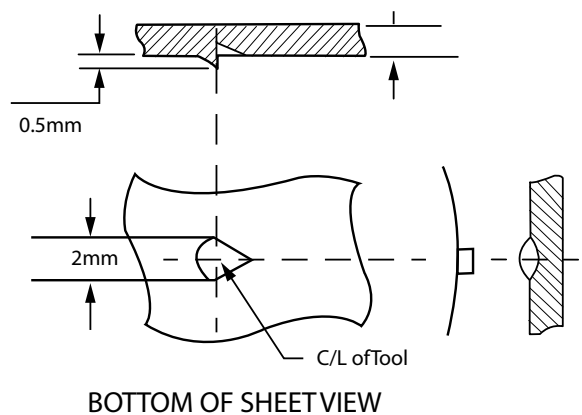
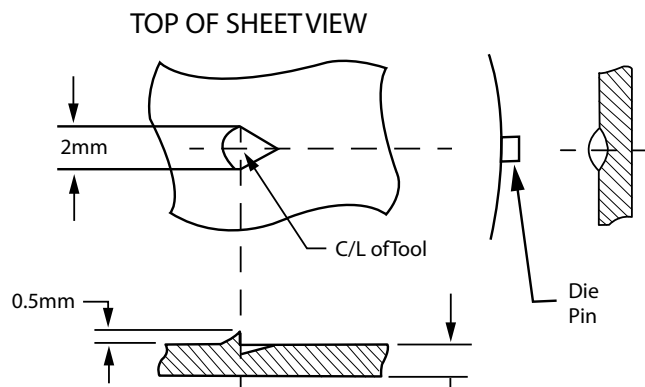
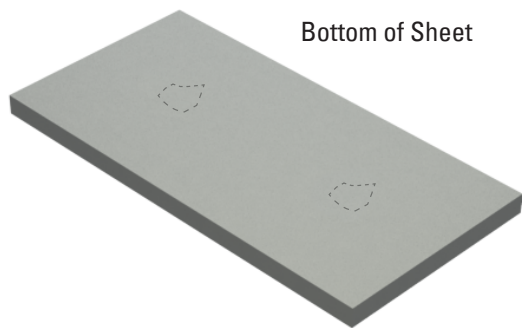
The Scratch form can be used for spot welding locators, locators for angular shearing and shear stops.

FEATURES

- Punches a range of material from 0.91mm to 3.18mm
- Height of the stop is 0.5mm to 0.8mm
- Can be used in an Auto Index station
- Tool is designed with relief for 12.7mm centers

INFORMATION NEEDED

- Machine model
- Material thickness and type
- Specify top of sheet scratch or bottom of sheet scratch



APPLICATIONS

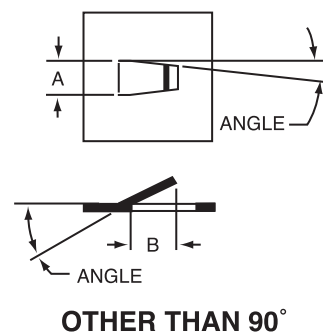
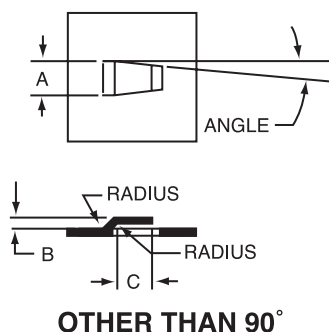
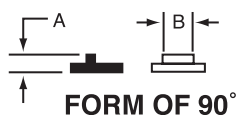
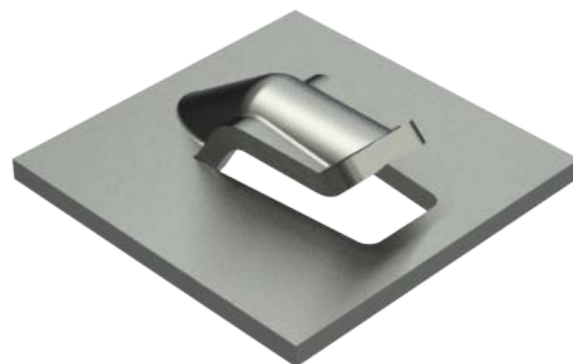
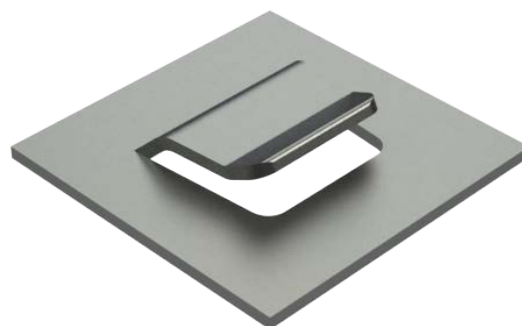
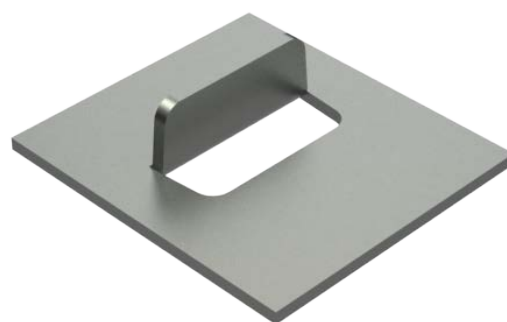
Lance and Forms are used for a variety of applications, including air flow, decoration, location markers, shear tabs, wire harnesses and clip attachments.

FEATURES

- High-quality lance and forms are assured with Wilson's positive form and self-stripping design.
- Lance and Forms less than 90° : Small and large station holders provides both cost savings and flexibility; purchase only a punch tip, ejector and die assembly to change size; use the same upper holder for other applications.
- Optima coating available for extending tool life.
- The large station holder is ABS/WLS ready, minimizing wear and maintenance.
- All tools are tested and inspected before shipping.

INFORMATION NEEDED

- Machine model
- Material thickness and type
- Drawing with dimensions and pattern if relief is required.
- Style of large station guide assembly - for lance and forms of 90° only (e.g. HP, Metric etc.)
- A taper of 5° per side should be added (if possible) to aid in stripping large station lance and forms.





APPLICATIONS

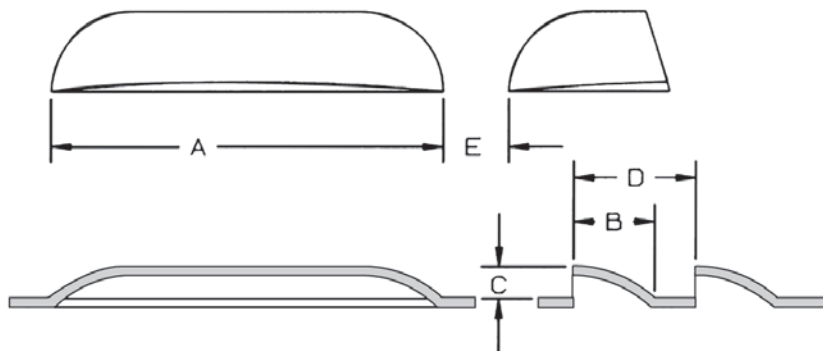
Louvres are used in a variety of industry applications that require airflow; Electrical enclosures, HVAC, and food service equipment.

FEATURES

- Stock sizes available.
- Lower costs with replaceable inserts that can be converted to different size Louvres.
- Single hit Louvres can be placed back to back (no web between Louvres).
- Keying at 0°, 90°, 180°, and 270° is standard.
- Sharpening instructions sent with the tools or factory sharpening is available.
- The large station universal holder provides both cost savings and flexibility; purchase only pocket, cutting, and forming inserts to change size; use the same upper holder for other applications such as lance and forms.
- Optima coating provided on cutting and forming inserts to extend tool life.
- The large station holder is ABS/WLS ready, minimizing wear and maintenance.
- All tools are tested and inspected before shipping.

INFORMATION NEEDED

- Machine model
- Material thickness and type
- Drawing with dimensions (A, B, C, D, and E)



APPLICATIONS

Progressive Louvres are used in a variety of industry applications that require airflow; Electrical enclosures, HVAC, and food service equipment. The progressive design produces various length louvres to give flexibility using one tool.

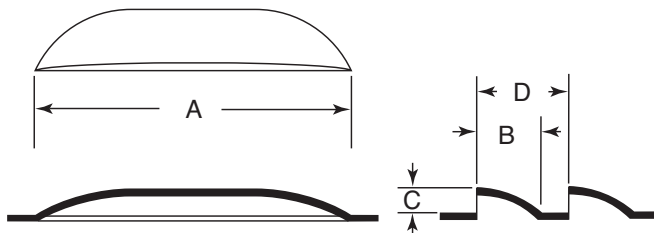
FEATURES

- Standard sizes available.
- Programme any length louvre.
- Run in nibbling mode (recommended incremental moves equal to the material thickness or less).
- Lower costs with replaceable inserts that can be converted to different size louvres.
- Keying at 0°, 90°, 180°, and 270° is standard.
- Sharpening instructions sent with the tools or factory sharpening is available.
- The large station universal holders provides both cost savings and flexibility; purchase only a pocket, cutting, and forming insert to change size, purchase only a pocket insert when changing material, and use the same upper holder for other applications such as single hit louvres and lance and forms.
- Optima coating provided on cutting and forming inserts to extend tool life.
- The large station holder is ABS/WLS ready, minimizing wear and maintenance.
- A Do's and Don'ts information sheet is provided for ease of programming.
- All tools are tested and inspected before shipping.
- Lower units supplied without stripping for best results.

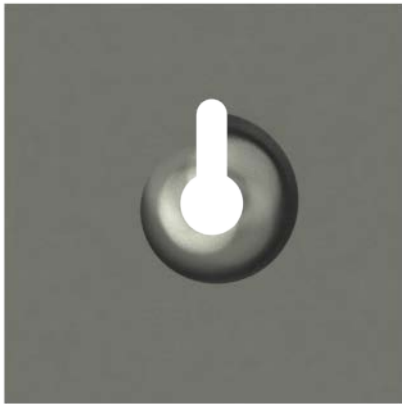
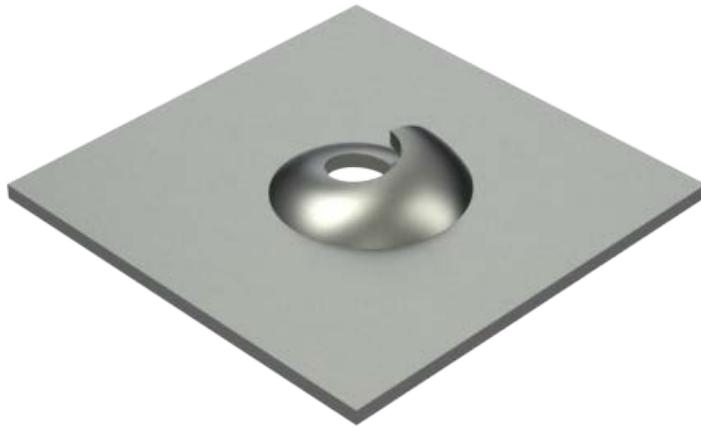


INFORMATION NEEDED

- Machine model
- Material thickness and type
- B, C and D dimensions



"A" dimension is programmable to any length.
Form length on first full hit is approximately 57mm long.



APPLICATIONS

A Thread Form from Wilson tool is a great solution for eliminating secondary operations and supplementary hardware where a threaded hole is required.

FEATURES

- Reduces costly hardware and assembly time.
- Pre-punch information provided.
- Coining is included in the design of the tool when recommended material thickness is exceeded.
- All tools are tested and inspected before shipping.

INFORMATION NEEDED

- Machine model
- Material thickness and type
- Thread size and type

Imperial Sized Screws	Metric Sized Screws
6-18	2.9 x 1
6-20	3.5 x 1.3
6-32	4.2 x 1.4
7-16	4.8 x 1.6
8-15	5.5 x 1.8
8-32	6.3 x 1.8
10-12	8 x 2.1
10-16	9.5 x 2.1
10-24	M4
10-32	M5
12-11	M6
12-14	M8
14-10	M10
20-9	M12
1/4-14	M14
1/4-20	M16
5/16-12	M20
5/16-18	M24

Custom Sizes Available

APPLICATIONS

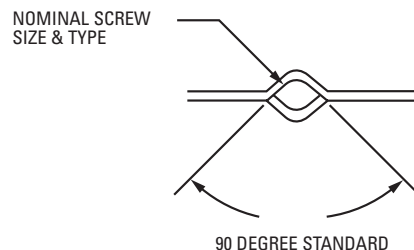
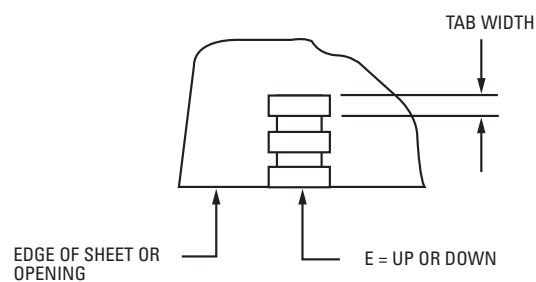
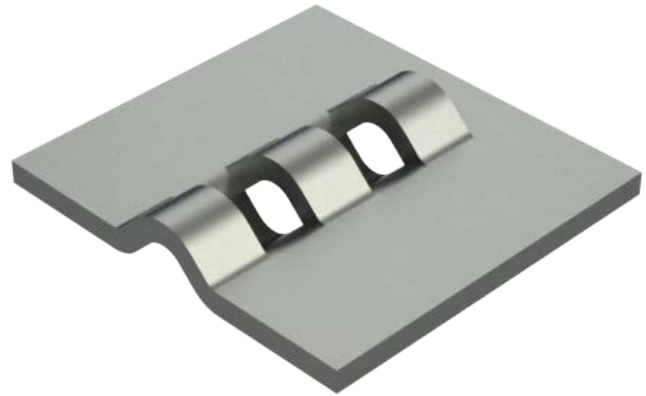
A Thread Loop from Wilson Tool is a great solution for eliminating secondary operations and supplementary hardware where a threaded hole is required.

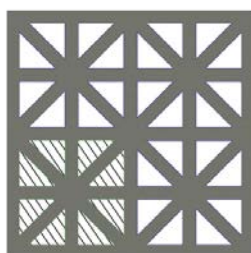
FEATURES

- The Thread Loop tool allows a significant reduction in manufacturing time, supplementary hardware and assembly time.
- The Wilson design gives a positive form, which ensures a high quality part.
- Reduces costly hardware and assembly time.
- Optima coating available for extending tool life.
- All tools are tested and inspected before shipping.

INFORMATION NEEDED

- Machine model
- Material thickness and type
- Number of thread loop tabs
- Width of tab
- Diameter of opening or screw size and type
- Drawing if possible





APPLICATIONS

Cluster tools are used for air ventilation, drains and filters. The Cluster tool is the most cost effective method to manufacture perforated patterns. Cluster piercing is ideal for applications where tight tolerance is required on the hole pattern.

FEATURES

- Saves on machine punching time and costly tool maintenance.
- Holds tight tolerance from hole to hole.
- Available in rounds, standard shapes, special shapes or any combination required.
- Solid designed punch or replaceable insert style available on any hole size, shape and pattern.
- The replaceable insert style provides additional cost savings with replaceable inserts. The added benefit is the ability to change the cluster pattern, size and shape by purchasing only the punch tip, inserts, die and stripper.
- The solid style cluster tends to be less expensive and can have a shorter lead time.
- Wilson Tool's back bending feature on dies can help reduce sheet distortion.
- Slug Hugger® 2 available and recommended to eliminate slug pulling.
- Progressive clusters can be designed to finish your part complete all within one tool: pierce and blank, or pierce, form and blank.
- Optima coating available and recommended for extending tool life.

INFORMATION NEEDED

- Machine model
- Material type and thickness or range
- Number of hole clusters
- Straight or staggered pattern
- Centre-to-centre dimensions
- Replaceable or Solid design
- Style of large station guide assembly

APPLICATIONS

The Wilson Tool ID Stamp eliminates secondary handling costs and ensures consistent marking. A letter stamping tool is a perfect solution for permanently marking and displaying company names, serial numbers, or part numbers.

FEATURES

- Used in an Auto Index station, you can stamp up to 40 different characters, including numbers, letters, and various symbols.
- Designed to take the standard 3mm letter stamp character.
- Reduces the number of tools needed to mark parts.
- Eliminates secondary stamping operations.
- Adjustable for 3mm material range.
- The large station holder is ABS/WLS ready, minimizing wear and maintenance.
- Adapters can be used to move B station tools to an Auto Index station.

INFORMATION NEEDED

- Machine model
- Material thickness range and type





APPLICATIONS

Letter Stamps eliminate secondary handling costs and ensure consistent marking. A letter stamping tool is a perfect solution for permanently marking and displaying company names, serial numbers, or part numbers.

FEATURES

- Stock sizes available in Single and Double Row.
- Reduces the number of tools needed to mark parts.
- Eliminates secondary stamping operations.
- Adjustable for 3mm material range.
- Replaceable punch tip design allows for versatility as well as quick and easy change out.
- Interchangeable punch tip design provides cost savings and flexibility to change character size by purchasing only a punch tip and characters.
- Form-Up Letter Stamp tools are made self-stripping.

INFORMATION NEEDED

- Machine model
- Material thickness and type
- Size character, number of rows, number of characters per row
- Station size and style of tooling



FORM-DOWN				
MAXIMUM NUMBER OF CHARACTERS PER ROW FOR SINGLE & DOUBLE ROW STAMP				
SIZE	B STN	C STN	D STN	E STN
1.57mm	22	24	48	64
2.36mm	14	16	32	43
3.17mm	10	12	24	32
4.75mm	7	8	16	21
6.35mm	5	6	12	16
9.52mm*	**3	**4	8	10

Maximum Characters for one or two rows

* Maximum Characters for one row only

** One row only

FORM-UP								
MAXIMUM NUMBER OF CHARACTERS PER ROW								
SIZE	B STN		C STN		D STN		E STN	
	1 Row	2 Rows	1 Row	2 Rows	1 Row	2 Rows	1 Row	2 Rows
1.57mm	20	20	31	31	53	53	64	64
2.36mm	14	14	21	21	35	35	43	43
3.17mm	10	10	15	15	26	26	32	32
4.75mm	7	N/A	10	10	17	17	21	21
6.35mm	5	N/A	8	8	13	13	16	16
9.52mm*	3	N/A	5	N/A	8	N/A	10	N/A

APPLICATIONS

The Wilson Multi-Scribe is ideal for both sheet scribing and dot-matrix marking on a wide range of materials. Unique designs and logos can be achieved just by programming.

Complete Kit Includes:

Punch & Die Assembly
(Assembled with 120° diamond and red medium pressure spring).

- » 1- Yellow Light Spring
- » 1- Green Heavy Spring
- » 1- 150° Diamond Insert
- » 1- 90° Carbide Insert
- » 1- 3mm Hex Wrench
- » 1- Set of User Instructions

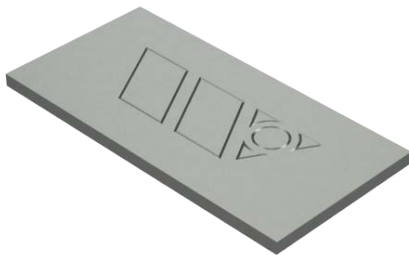
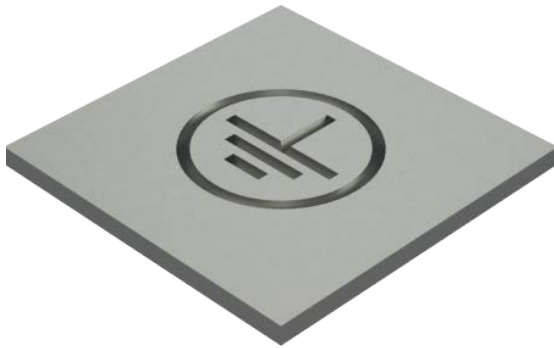


FEATURES

- Use for sheet “scribing” or “dot-matrix” marking
 - » Mechanical rams produce “dot-matrix” sheet marking
 - » Hydraulic rams produce both “scribe” and “dot-matrix” sheet marking
- Works on a range of materials.
- Variable scribe depth.
- Design allows for consistent mark depth.
- Long lasting diamond tip.
- Will not deform the material or mark the underside of the sheet.

INFORMATION NEEDED

- Machine model
- Material thickness and type



APPLICATIONS

Stamping the top or bottom of the sheet is the perfect solution for permanently displaying company names, serial numbers, symbols, and product or company logos.

Ground Symbols are widely used in the electrical industry.

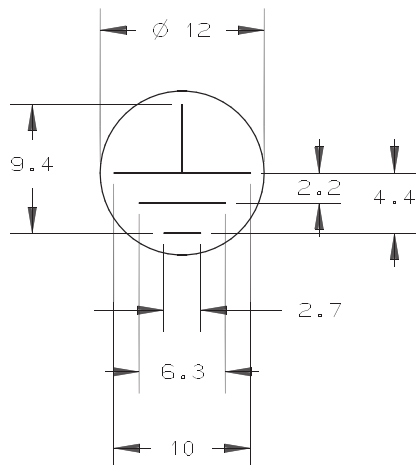
Dash tools can be used to "V" notch the sheet to aid in bending, create numbers and letters, and location marks on a sheet.

FEATURES

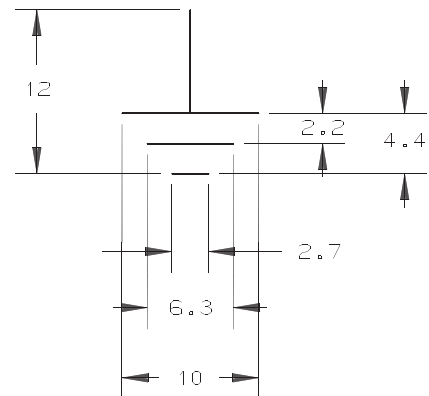
- Ground Symbols are available in stock sizes, form-down or form-up.
- Dash tools are available in form-down or form-up.
- Dash tools are available in various lengths or can be run progressively.
- Used in the Auto Index station Dash tools can be used to create numbers or letters.
- All form-up tools are designed self-stripping to prevent sheet marking and tool wear.
- Logos stamps and other special stamps can be manufactured easily when an electronic file is provided.
- Adjustable for 3.18mm material range.

INFORMATION NEEDED

- Machine model
- Maximum material thickness and type
- Length of dash
- Size of ground symbol (stock or non-stock)
- Electronic file for logos
- Form-up or Form-down



**GROUND SYMBOL
STOCK DIMENSIONS**



APPLICATIONS

The Wilson Tool De-Burring tool eliminates the secondary operation of removing burrs from your parts.

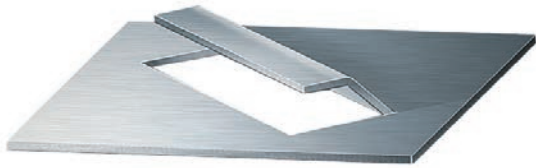
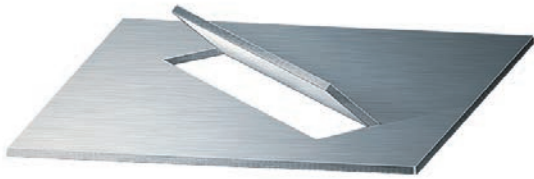
FEATURES

- Fast and efficiently de-burrs your parts while on the turret.
- Eliminates costly secondary operation.
- Coins a small chamfer on the cut edge top and bottom of sheet.
- Can be used to de-burr nested parts.
- Adjust ball pressure without disassembling the tool.

INFORMATION NEEDED

- Machine model
- Material thickness and type





APPLICATIONS

Machines with high form stations require special tooling that can achieve forms in the sheet up to 12mm high or higher.

FEATURES

- Able to form closer to the clamps with less distortion to the sheet.
- Able to pierce holes in adjacent stations with less distortion.

INFORMATION NEEDED

- Machine model
- Material thickness and type
- Drawing with dimensions

APPLICATIONS

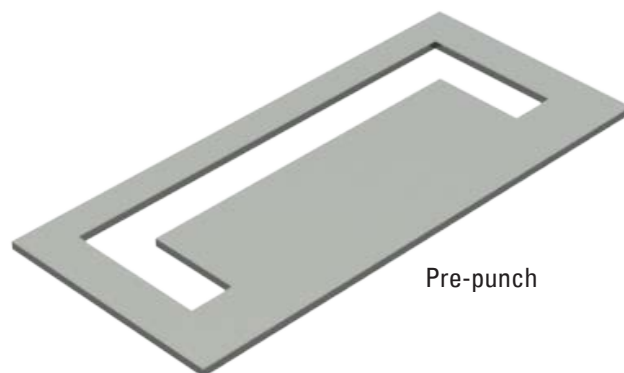
The Wilson Opti-Bend allows you to achieve exceptionally high bends up to 90° in your punch press, eliminating costly time-consuming secondary operations in a press brake.

FEATURES

- Performs 90° bends on a punch press with neutral pull on the sheet (won't pull out of clamps).
- Special rotating cam design minimizes sheet marking on soft or high polished materials.
- Available in single hit or progressive styles.
- Possible to achieve 3° over bend.
- Can be run on a small range of material.

INFORMATION NEEDED

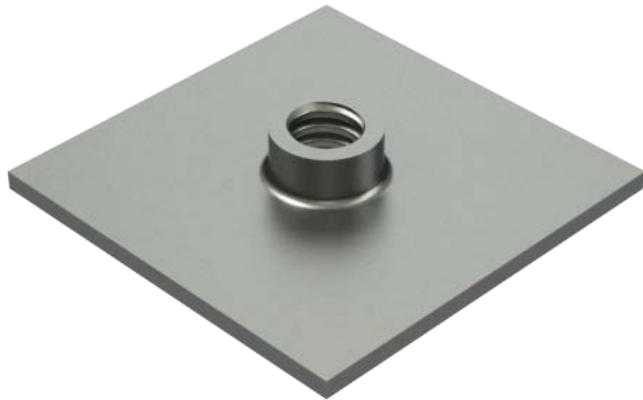
- Machine model
- Material thickness and type



Pre-punch



Opti-bend



Extruded Hole Shown

APPLICATIONS

The Tapping tool allows you to create high precision threads at any programmed location on the sheet.

FEATURES

- Tap a hole or an extruded hole with every machine stroke – up to 200 holes per minute.
- Available for most major brands of turret style punch presses.
- Built-in tapping fluid injection system is synchronized with the machine stroke to reduce wear and breakage.
- Taps are easily changed - no disassembly is required.
- Available in imperial and metric sizes.
- Works on a wide range of material.
- Stock size pitch inserts and taps are available for fast delivery.
- A complete instruction manual sent with each tool.

INFORMATION NEEDED

- Machine model
- Material thickness and type
- Thread size to be tapped

APPLICATIONS

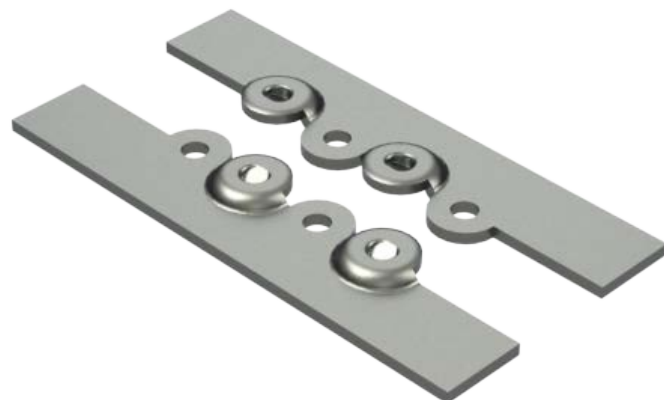
Our Zip-Tech lance and form tool fabricates snaps to join metal parts together, eliminating time-consuming and labour intensive welding and grinding operations, spot-welding or other fastening methods.

FEATURES

- Zip-Tech form is achieved in three operations:
 1. Pre-punch – round hole
 2. Pre-punch – T-shape hole
 3. Zip-Tech Lance and Form
- Different types of materials of the same thickness can be joined together.

INFORMATION NEEDED

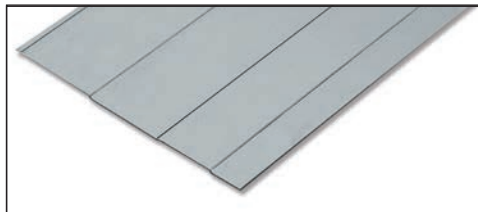
- Machine model
- Material thickness and type
- Auto index stations available
- Available for 0.8 - 2mm material thickness



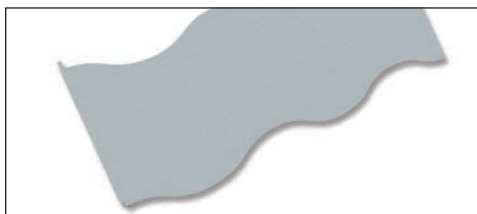
WILSON WHEEL FAMILY



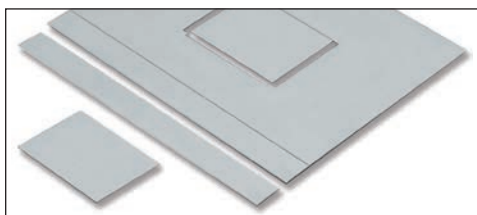
ROLLING RIB



ROLLING OFFSET



ROLLING SHEAR



ROLLING PINCHER



ROLLING FLARE

APPLICATIONS

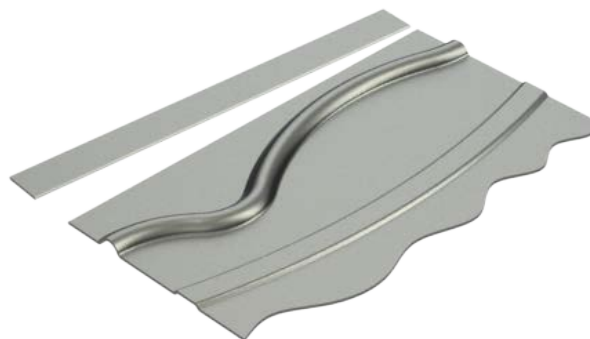
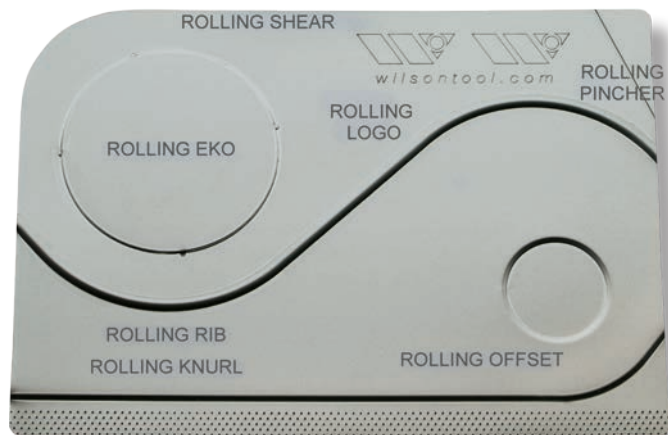
The Wilson Wheel family of products offers you flexible, high speed production of slits, ribs and offsets on a wide range of materials with virtually no burrs or nibble marks.

FEATURES

- High speed – equal to programmed table travel speed.
- Create curves, arcs and circles with your auto index station.
- Virtually no burrs or nibble marks on the sheet.
- Eliminate scrap with the rolling shear and pincher.
- Replacement forming wheels available.
- Available in Form-up or Form-down.
- Works on a wide range of material.
- Wheel tools can start or end anywhere on the sheet.
- Stock sizes available for fast delivery.
- A complete instruction manual sent with each tool.

INFORMATION NEEDED

- Machine model
- Material thickness and type



APPLICATIONS

Light Spring Packs help reduce sheet and form distortion as well as sheet marking in forming operations. Also helps reduce sheet marking in piercing operations.

FEATURES

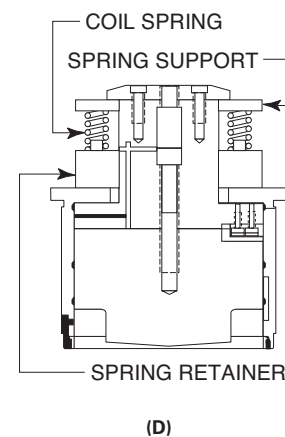
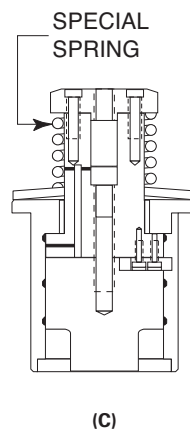
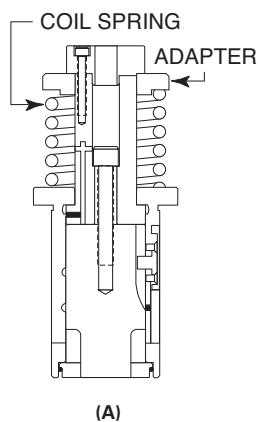
- Fast and easy assembly and disassembly with Series 80®, Series 80 Plus®, Series 90® and High Performance® (HP). Simply spin off the existing spring unit and spin on the partial light spring unit.
- Sold in partial or complete spring units.
- Assembly instructions included.

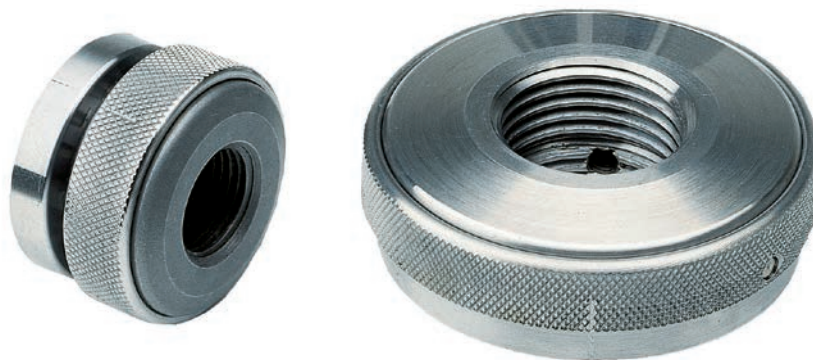


INFORMATION NEEDED

- Type of holder

OTHER ASSEMBLY DESIGNS





APPLICATIONS

The E-Z Set™ punch head provides quick turn-of-the-wrist adjustment. A simple lift and turn of the adjustable head is all that is required. You can achieve just the right mark or form when using the E-Z Set™ punch head on A or B station stamping and forming tools.

FEATURES

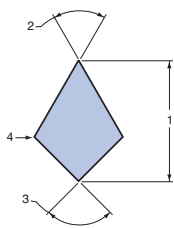
- Trial and error is streamlined by the E-Z Set™ punch head.
- Costly machine down time for tool adjustment is converted into productive machine up time.
- Each adjustment click provides a 0.09 mm incremental change in the tool length.
- The maximum adjustment is approximately 3.18 mm.
- Fine length adjustments can now be made without removing the tool from the turret.
- You will see instant payback based on reduced machine down time.
- Instructions come with punch head.

INFORMATION NEEDED

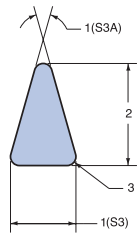
- Type of holder

GROUP "A"

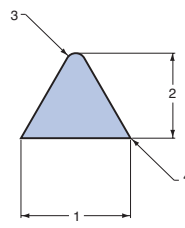
Note: Special Considerations May Alter Price and Lead Time



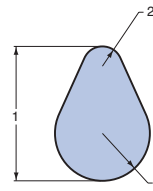
S1



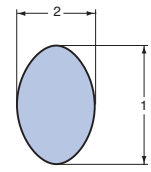
S3 -S3A



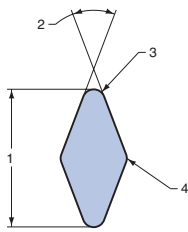
S4



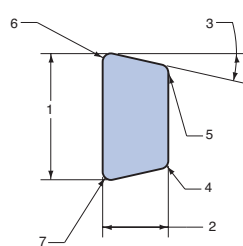
S7



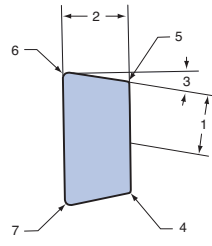
S8



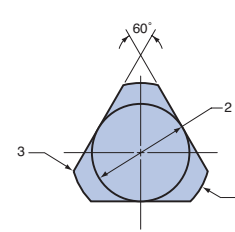
S9



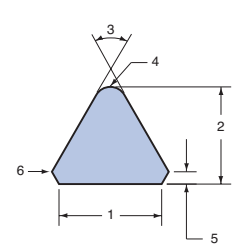
S23



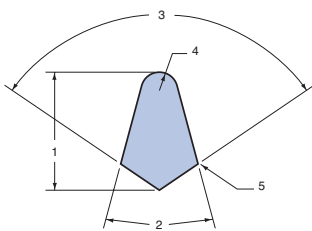
S23A



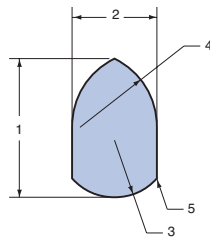
S50



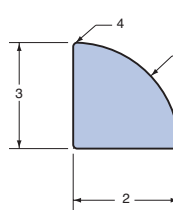
S51



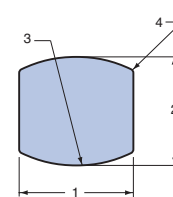
S59



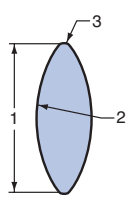
S65



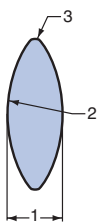
S69



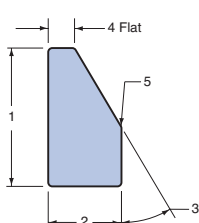
S81



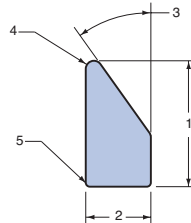
S95L



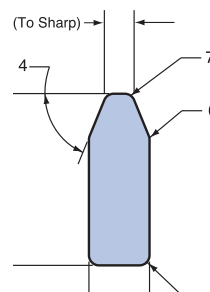
S95W



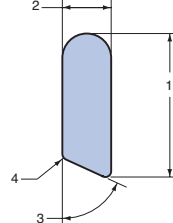
S97



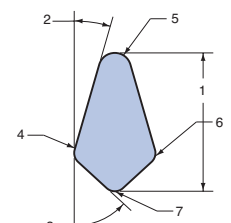
S100



S102

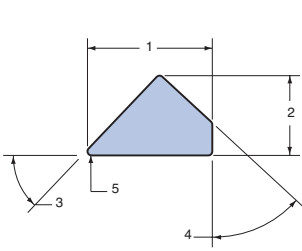


S103

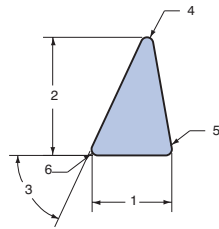


S105

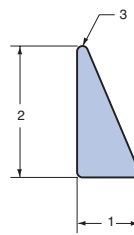
GROUP "A"



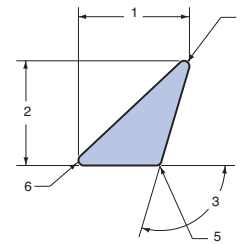
S106



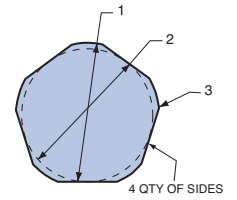
S108



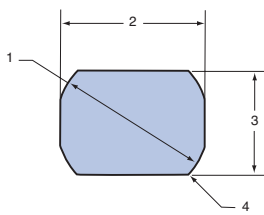
S109



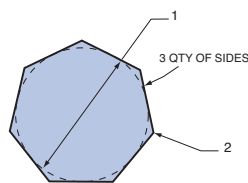
S110



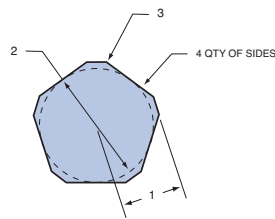
S121



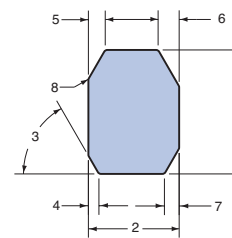
S122



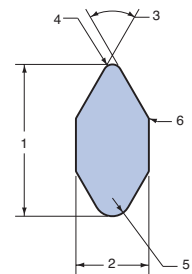
S123



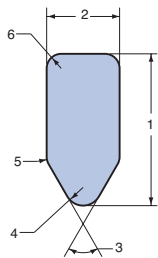
S124



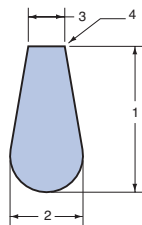
S161



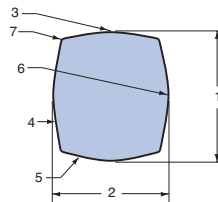
S162



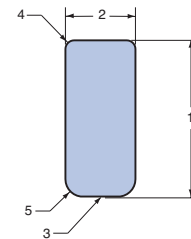
S163



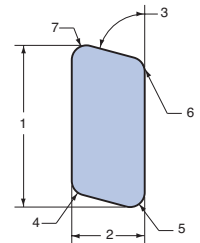
S164



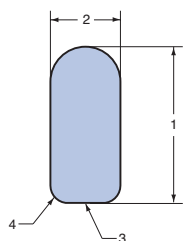
S165



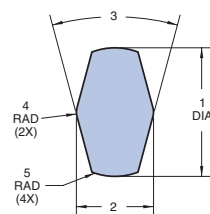
S166



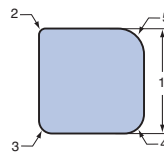
S167



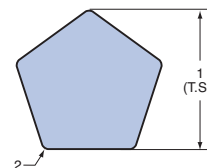
S170



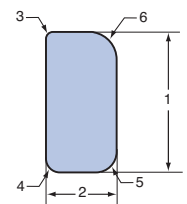
S181



SQF

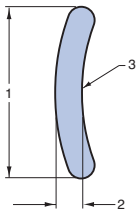


PN

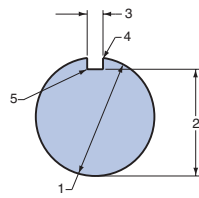


RTF

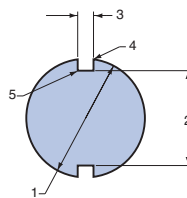
GROUP "B"



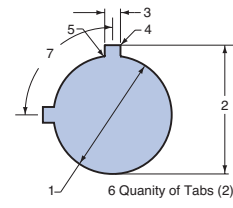
S6



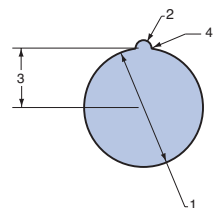
S10



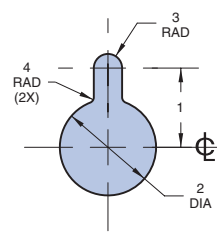
S11



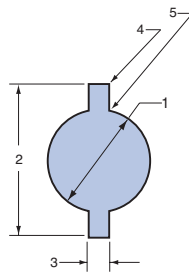
S12



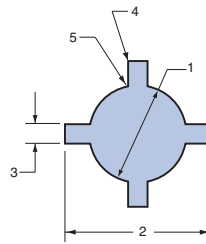
S13



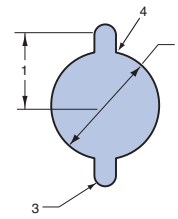
S14



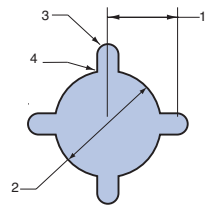
S15



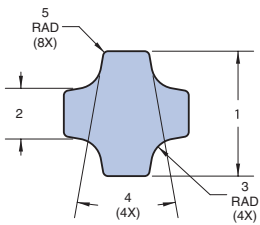
S16



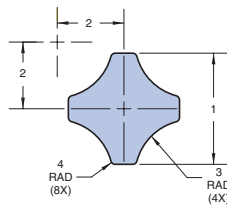
S17



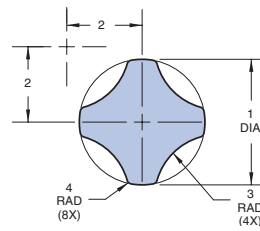
S18



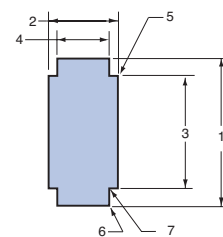
S19



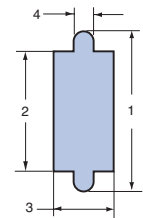
S19A



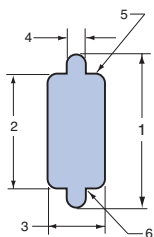
S19B



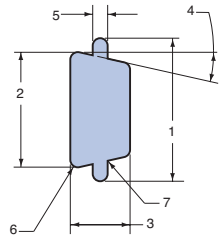
S20



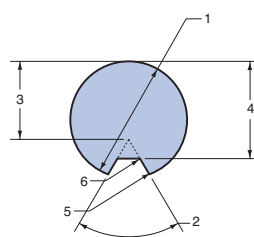
S21



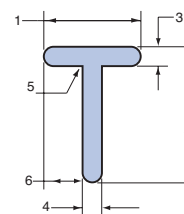
S22



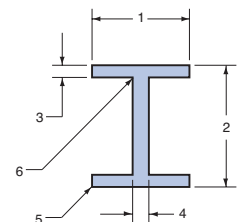
S24



S30

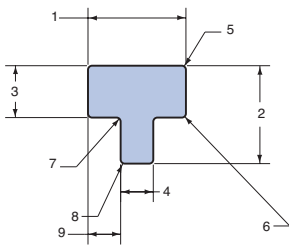


S31

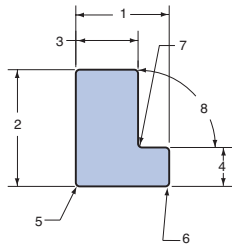


S33

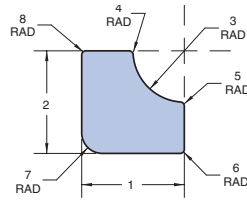
GROUP "B"



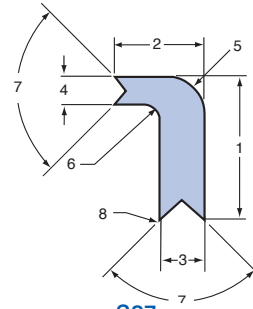
S35



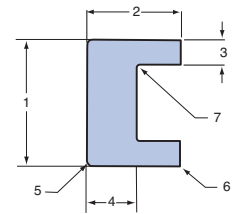
S36



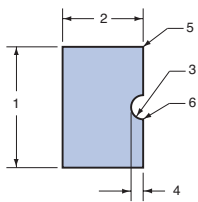
S36A



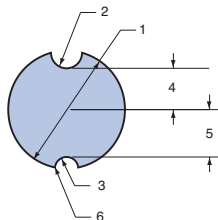
S37



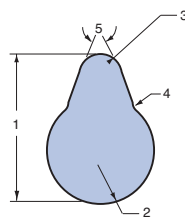
S40



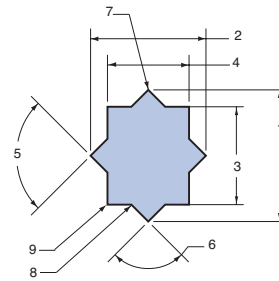
S41



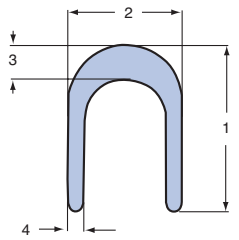
S42



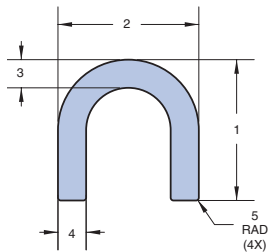
S43



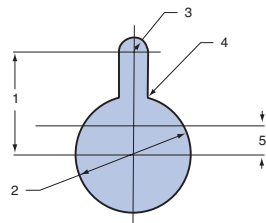
S46



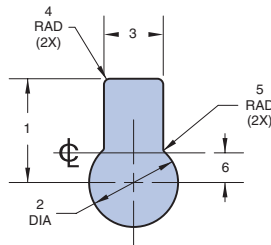
S54



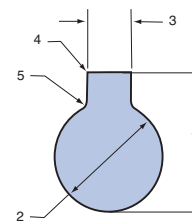
S55



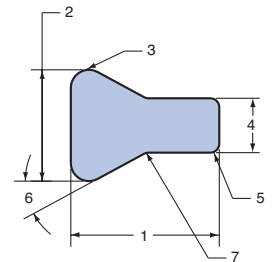
S56



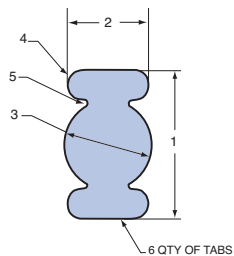
S57



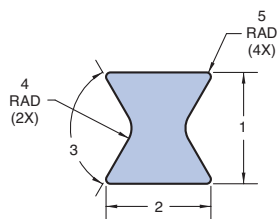
S58



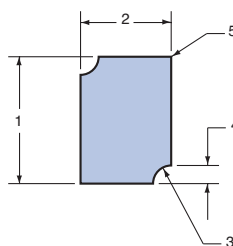
S60



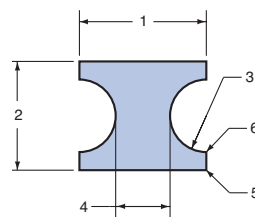
S61



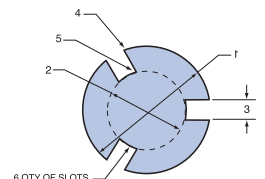
S62



S66

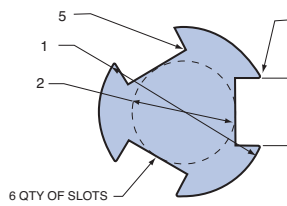


S79

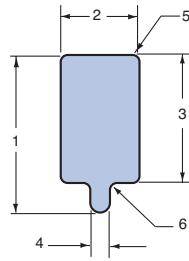


S82

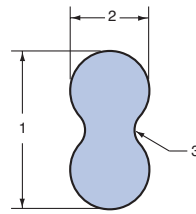
GROUP "B"



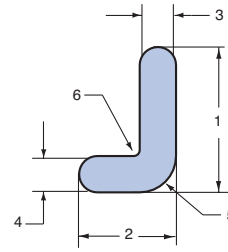
S83



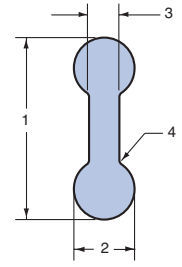
S84



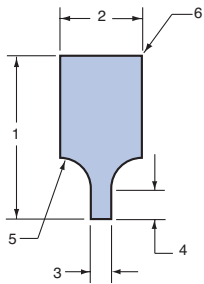
S87



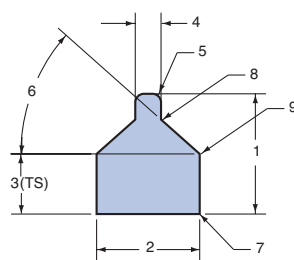
S88



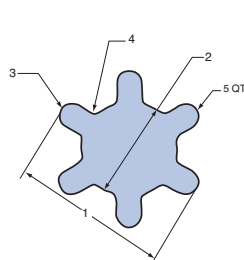
S91



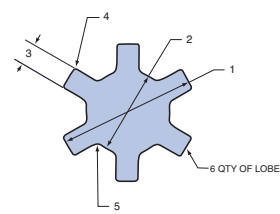
S93



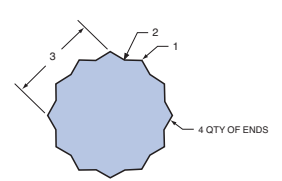
S114



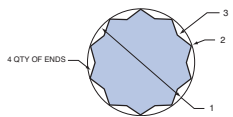
S115



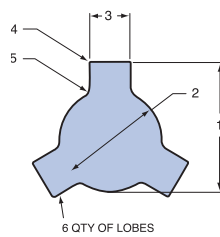
S116



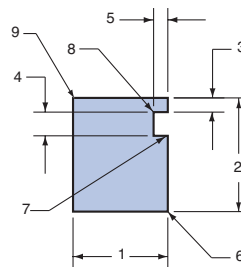
S117



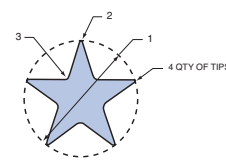
S118



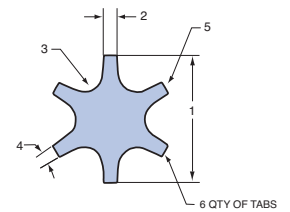
S119



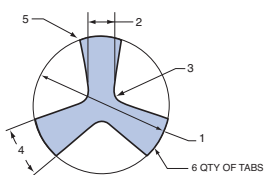
S120



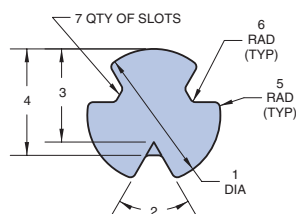
S125



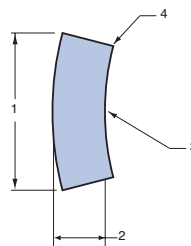
S126



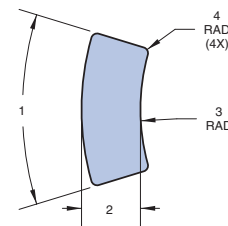
S127



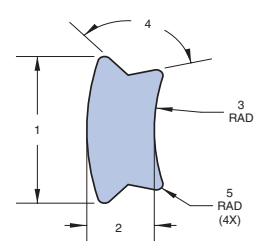
S128



S141

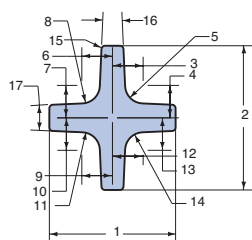


S141A

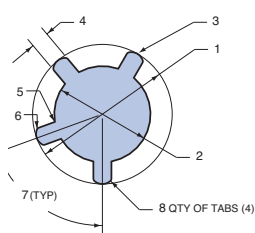


S142

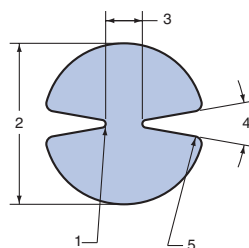
GROUP "B"



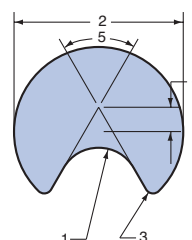
S168



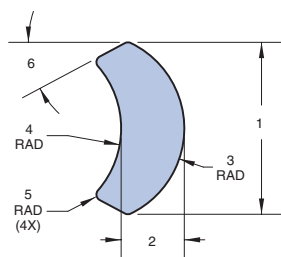
S169



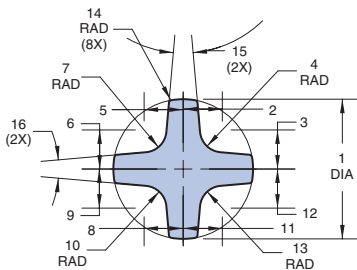
S171



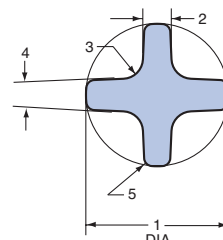
S172



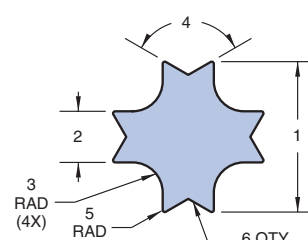
S174



S176

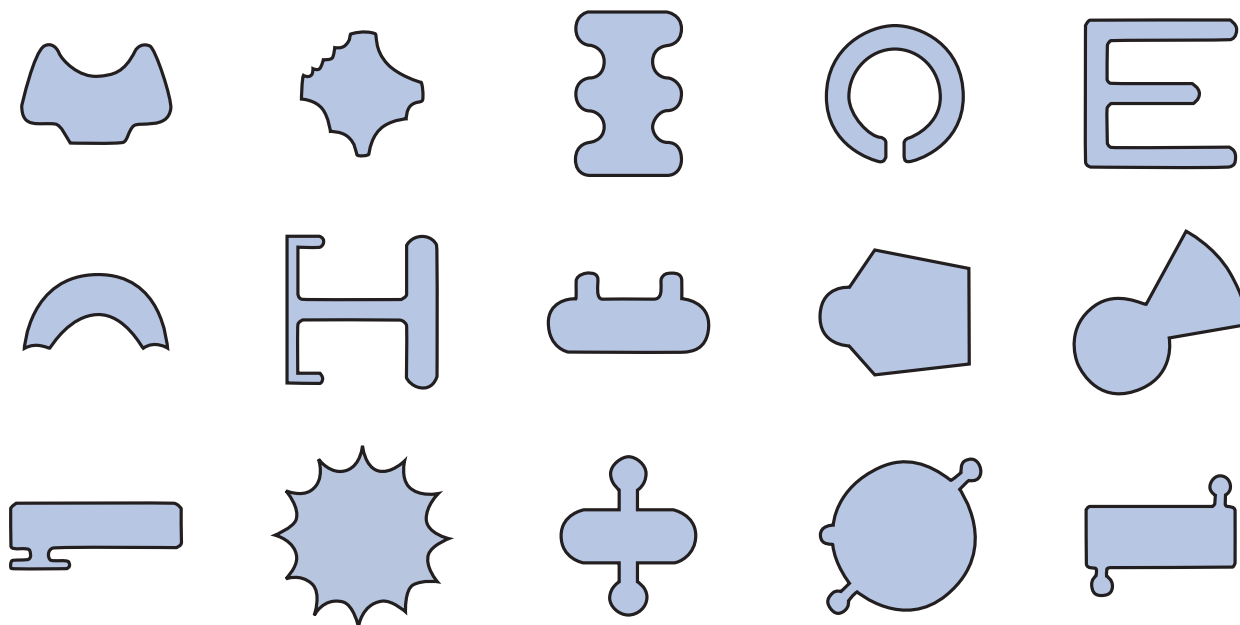


S177

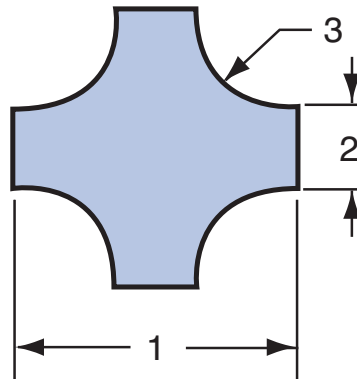


S179

GROUP "C"



Any complex 2D shape ordered with a DXF file will be priced as a "B" Group.

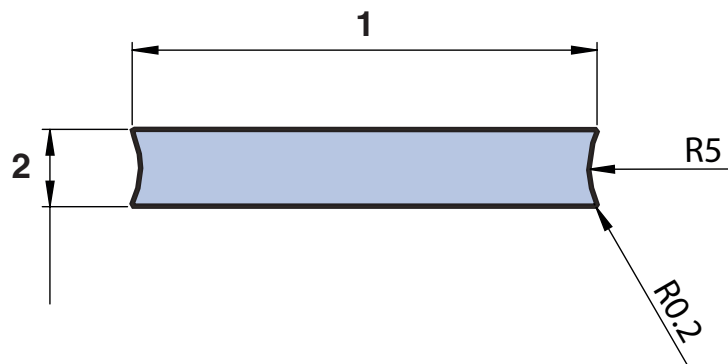
4-WAY RADIUS TOOLS - STANDARD SIZES

Information required:

1 = _____

2 = _____

3 = _____

INVERTED DIAMOND

Information required:

1 = _____

2 = _____

WILSON TOOL INTERNATIONAL

Wilson Tool International, Ltd. - United Kingdom
Stirling Road, South Marston Industrial Estate,
Swindon, Wiltshire, SN3 4TQ, United Kingdom
Tel (Free): 0800 012 1475 | Tel: +44 1793 831818
Fax (Free): 0800 012 1476 | Fax: +44 1793 831945 or 46
Email: pbsales@wilsontool.eu.com

Wilson Tool International, Inc. - United States
Tel (Free): 800-328-9646 | Tel: 651-286-6001
Fax (Free): 800-222-0002 | Fax: 651-286-5959
Email: sales@wilsontool.com

Wilson Tool International - China
Tel: +86 21 51089638 | Fax: +86 21 64422195
Email: sales@wilsontool.cn

Wilson Tool International - Germany
Tel (Free): 00800-9457668665 | Tel: +49 5723 747 0
Fax (Free): 00800-945766329 | Fax: +49 5723 747 10
Email: verkauf@wilsontool.eu.com

Wilson Tool International A/S - Denmark
Tel (Free): 80 20 20 24 | Tel: +45 44 53 1699
Fax (Free): 80 20 20 26 | Fax: +45 44 53 0607
Email: sales@wilsontool.dk

Wilson Tool International - France
Tel: +33 (0) 164 13 47 80 | Fax: +33 (0) 164 13 47 81
Email: ventes@wilsontool.eu.com

Wilson Tool International - Argentina
Tel: +54 114 7634004 | Fax: +54 114 5084190
Email: ventasargentina@wilsontool.com

Wilson Tool - South Africa (Pty) Limited
Tel: +27 877 217 875 | Fax: 086 657 8629
Email: simon.penney@wilsontool.com

The Wilson Tool Company S. de R.L. de C.V. - Mexico
Tel: 52 (81) 8865-4820 | Fax: 52 (81) 8865-4599
Email: americalatina@wilsontool.com

Wilson Tool Canada
Punching & Stamping Division
Tel: 800-268-5573 | Fax: 800-668-9314
Email: punching@wilsontoolcanada.com

Wilson Tool Canada
Press Brake Division
Tel: 800-268-4180 | Fax: 905-840-1032
Email: bending@wilsontoolcanada.com

Distribuito: **S.C. SM TECH S.R.L.**
www.sm-tech.ro
office @ **sm-tech.ro**
Tel : **0745-528494**
Fax: **0374-091010**

0615V1