

# WILSON X-SHARP GRINDER

Distributor:  
S.C. SM TECH S.R.L.  
<https://www.sm-tech.ro>  
<https://www.wilsontool.ro>  
office @ sm-tech.ro  
Tel: 0374-991480  
WhatsApp : 0745-528494



*Strength. Performance. Innovation*



*Sharpening your punch press tooling is simpler and faster with the unique and innovative X-Sharp grinder from Wilson Tool.*

**The benefits of correct and professional regrinding include:**

- Burr-free, quality parts straight off the punch press
- Longer tool life for reduced tooling costs
- No scrapped or wasted sheets due to tooling malfunction
- Reduced wear on your punch press

## Automated Tool Sharpening with the X-Sharp Grinder

### 5 Steps to a sharper edge

*Step 1:* Load the tool into the chuck

*Step 2:* Set the tool style

*Step 3:* Set the tool size

*Step 4:* Set the amount to grind (in 0.01mm increments)

*Step 5:* Touch the start button to sharpen the tool



1

2

3

4

5



## Features

### *Fully Automated Grinding Process*

The regrind process on the X-Sharp is fully automated and needs no previous grinding experience. After mounting the tool in the tool holder, the operator selects the tool size and how much to regrind and touches the start button. The operator is then free to return to other production tasks. When sharpening is complete, compressed air cleans the tool then the machine returns to its original position and switches off.

### *Suitable for All Tooling Styles*

With a flexible range of chucks and adapters, the X-Sharp can be used to sharpen all punch press tooling styles.

### *Precision*

The X-Sharp uses an AC-servo motor driving a precision gear and ball screw with dual linear guides and four carriers to provide highly stable bearing properties. This ensures a high level of precision and an excellent surface finish on your sharpened tools, giving maximum return on your investment.

### *Automated Height Detection*

The X-Sharp automatically measures the height of any tool mounted in the chuck before the grinding cycle begins.

### *Automatic Grinding Wheel Wear Compensation*

The X-Sharp automatically compensates for grinding wheel wear during machine start up.

### *Shear Grinding*

Punches with shears can also be sharpened using the X-Sharp shear grinding chuck.

### *Coolant*

The X-Sharp is equipped with a powerful closed coolant system, ensuring the tool is constantly flooded with coolant during the grinding process. This prevents burning and surface cracking, improving the quality of the grind and helping to maximise your tool life by giving you a factory sharp edge every time.

### *Frame*

The machine has a heavy-duty cast-iron frame. This gives the X-Sharp superior frame stability, a fundamental requirement for professional quality grinding.

### *Touchscreen Controller*

The X-Sharp has a touchscreen controller with user-friendly multi-language interface for easy operation of the machine. Interface language can be selected during machine set up.

### *Interlocking Safety Guard*

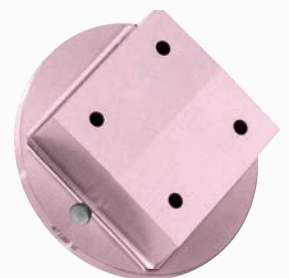
The X-Sharp is equipped with an interlocking safety guard that opens and closes automatically. The guard encloses the entire grinding area to protect the operator.

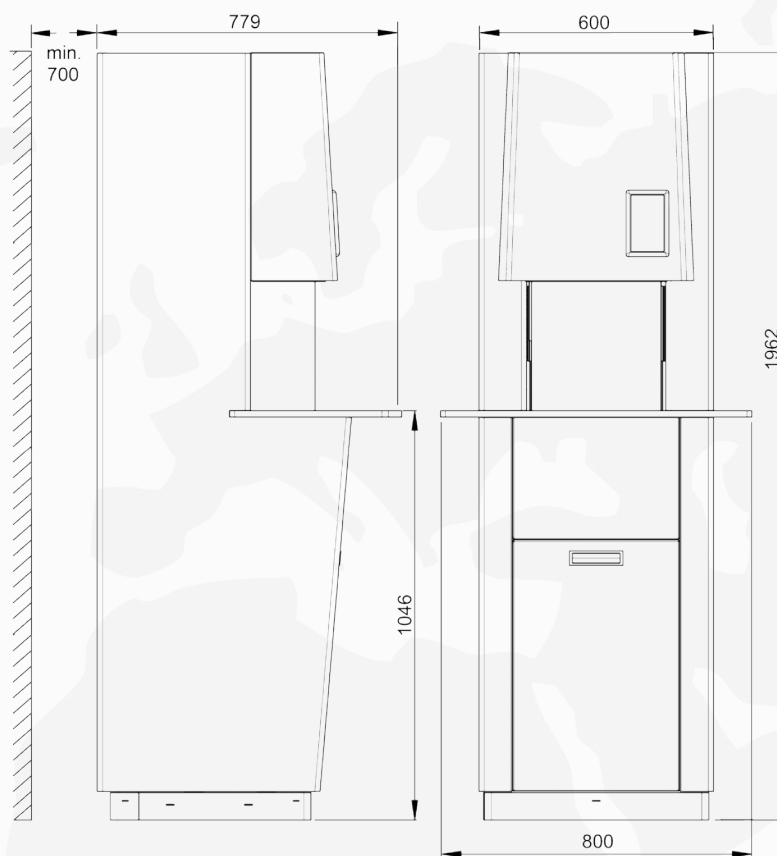
### *Grinding Space*

With a unique safety guard design, the grinding space on the X-Sharp is easily accessible from three sides. This makes the loading and unloading of tools quick and easy, and allows straightforward access for cleaning.

### *Footprint*

The small footprint of the X-Sharp means the machine can easily be placed next to the punch press. With the automation features of the X-Sharp, the operator can continue to use the punch press while a tool is being sharpened.





#### *Technical Specification\**

Maximum Tool Diameter	160 mm
Maximum Tool Height	230 mm
Maximum Grind Per Grinding Cycle	0.99 mm
Air Pressure Supply	6 bar
Power Supply	AC415 V 3 ph +N - 50 Hz / 3 x 16 A
Grinding Motor Power	2.2 kW
Wheel Rotation Speed	2800 rpm
Table Motor Power	0.18 kW
Table Rotation Speed	40
Coolant Pump Power	0.16 kW
Coolant Pump Water Flow	Max. 40 l/min

#### *Machine and Accessories*

Wilson X-Sharp Grinder (supplied with standard chuck)	Cat No. 55106
Wilson X-Sharp Shear Grinding Chuck	Cat No. 55115
Wilson X-Sharp Replacement Grinding Wheel	Cat No. 55109

Note: Adapters may be required for some ranges of Trumpf style tooling. Contact sales desk for further information.

\*Wilson Tool reserves the right to change machine specifications without prior notice.

Wilson Tool International (Europe) Ltd. Stirling Road, South Marston Industrial Estate, Swindon, Wiltshire SN3 4TQ

Free phone: 0800 373 748 - Tel: +44 (0) 1793 831 818 - Tel free: 1-800 70 90 09 Ireland

Free fax: 0800 373 758 - Fax: +44 (0) 1793 831 945 - Fax free: 1-800 53 55 38 Ireland

[www.wilsontool.com](http://www.wilsontool.com) [sales@wilsontool.eu.com](mailto:sales@wilsontool.eu.com)

