

Catalog piese schimb și accesorii pentru mașini de ștanțat CNC și abkant

PARTS AND ACCESSORIES | Catalogue



Distribuitor:
SM TECH SRL
<https://www.sm-tech.ro>
info@sm-tech.ro
Tel : 0374-991480
Mobil / Whatsapp: 0745-528494

Contents

X-SHARP™ GRINDER.....	6
X-SHARP™ GRINDER, ACCESSORIES AND ADAPTORS	8
GRINDING WHEELS AND SPARES.....	9
QUICKTAP®	10
ULTRASONIC TOOL CLEANER	12
XTREME STORAGE SOLUTIONS	13
XTREME STORAGE SOLUTIONS FOR TRUMPF® STYLE TOOLING.....	15
XTREME STORAGE SOLUTIONS FOR TURRET TOOLING.....	17
XTREME STORAGE SOLUTIONS FOR PRESS BRAKE TOOLING.....	20
XTREME STORAGE DRAWER INSERTS - CUSTOMISED	21
TOOL HANDLING AND STORAGE.....	22
PUNCH PRESS TOOLING ACCESSORIES	25
PUNCH PRESS MACHINE ACCESSORIES	30
TOOL ASSEMBLY AND ALIGNMENT	33
DIGITAL MEASURING EQUIPMENT	35
LUBRICANTS AND COOLANTS	36
PRESS BRAKE TOOLING ACCESSORIES.....	37
PRESS BRAKE MACHINE ACCESSORIES.....	38
HAND TOOLS	39

Introduction

INCREASE YOUR SPEED AND ACCURACY

Wilson Tool have multiple, easy-to-use squaring options to help increase productivity and bending accuracy. Suitable for any press brake die with a flat surface, powerful magnets replace the need for screws or fastening tools and allow for easy repositioning.



REPLACEMENT MACHINE PARTS

High quality, competitively priced clamp assemblies, turret keys and other replacement parts for your turret press machine.



ACCURATE AND EASY MEASUREMENT

A line of digital measurement tools to help sheet metal fabricators become more productive without breaking your budget. These lightweight, easy-to-use, highly accurate, affordable tools will become a must-have in your shop.



NOT YOUR AVERAGE TRUMPF® STYLE CARTRIDGE

Enhance your punch press productivity with new Trumf® style tool cartridges from Wilson Tool. Designed for durability and performance, the Wilson Tool Trumf® style cartridge is constructed of 6061 T6 aluminum – a lightweight, yet highly durable alternative to plastic or steel cartridges.



GET THE MOST FROM YOUR PUNCHES AND DIES

High precision sharpening of punch and die tooling with an excellent surface finish. Ensure you get the most from your tooling by maintaining it in optimum condition with the fully automated X-Sharp™ Grinder.



SAVE TIME WITH WELL-ORGANISED TOOLING CABINETS AND WORKSHOP TROLLEYS

Workshop storage systems from Wilson Tool are designed with the Lean workshop in mind. Storage cabinets and transport trolleys are tailored to suit your specific punch press and press brake tooling styles, so your tooling is easy to find and protected from damage.



FAST AND EFFICIENT TOOL CLEANING

The Ultrasonic cleaner from Wilson Tool is a simple and highly efficient way of cleaning your punch press and press brake tooling.

The most difficult of cleaning tasks are made simple using the large capacity bench top range, or the smaller table top models.



ELIMINATE TIME-CONSUMING SECONDARY TAPPING OPERATIONS

The Wilson Tool QuickTap® eliminates costly secondary tapping applications, creating fast accurate taps on the punch press at any programmed location on the sheet.



X-Sharp™ Grinder



Sharpening your punch press tooling is simpler and faster with the unique and innovative **X-Sharp™ Grinder** from Wilson Tool.

THE BENEFITS OF CORRECT AND PROFESSIONAL REGRINDING INCLUDE:

- Burr-free, quality parts straight off the punch press
- Longer tool life for reduced tooling costs
- No scrapped or wasted sheets due to tooling malfunction
- Reduced wear on your punch press

AUTOMATED TOOL SHARPENING WITH THE X-SHARP™ GRINDER

FIVE STEPS TO A SHARPER EDGE

STEP 1: Load the tool into the chuck

STEP 2: Set the tool style

STEP 3: Set the tool size

STEP 4: Set the amount to grind (in 0.01mm increments)

STEP 5: Touch the start button to sharpen the tool



STEP 1



STEP 2



STEP 3



STEP 4



STEP 5

TECHNICAL SPECIFICATION

Maximum Tool Diameter	160 mm
Maximum Tool Height	230 mm
Maximum Grind Per Grinding Cycle	0.99 mm
Air Pressure Supply	6 bar
Power Supply	AC415 V 3 ph +N - 50 Hz / 3 x 16 A
Grinding Motor Power	2.2 kW
Wheel Rotation Speed	2800 rpm
Table Motor Power	0.18 kW
Table Rotation Speed	40
Coolant Pump Power	0.16 kW
Coolant Pump Water Flow	Max. 40 l/min

Scan the QR code to watch the video



Features

Fully Automated Grinding Process

The regrind process on the X-Sharp™ is fully automated and needs no previous grinding experience. After mounting the tool in the tool holder, the operator selects the tool size and how much to regrind and touches the start button. The operator is then free to return to other production tasks. When sharpening is complete, compressed air cleans the tool then the machine returns to its original position and switches off.



Suitable for All Tooling Styles

With a flexible range of chucks and adapters, the X-Sharp can be used to sharpen all punch press tooling styles.

Precision

The X-Sharp™ uses an AC-servo motor driving a precision gear and ball screw with dual linear guides and four carriers to provide highly stable bearing properties. This ensures a high level of precision and an excellent surface finish on your sharpened tools, giving maximum return on your investment.



Automated Height Detection

The X-Sharp™ automatically measures the height of any tool mounted in the chuck before the grinding cycle begins.

Automatic Grinding Wheel Wear Compensation

The X-Sharp™ automatically compensates for grinding wheel wear during machine start up.



Shear Grinding

Punches with shears can also be sharpened using the X-Sharp™ shear grinding chuck.

Coolant

The X-Sharp™ is equipped with a powerful closed coolant system, ensuring the tool is constantly flooded with coolant during the grinding process. This prevents burning and surface cracking, improving the quality of the grind and helping to maximise your tool life by giving you a factory sharp edge every time.

Frame

The machine has a heavy-duty cast-iron frame. This gives the X-Sharp™ superior frame stability, a fundamental requirement for professional quality grinding.

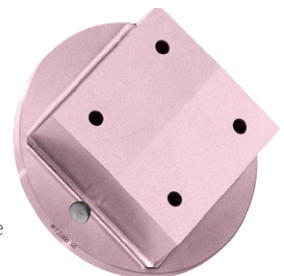


Touchscreen Controller

The X-Sharp™ has a touchscreen controller with user-friendly multi-language interface for easy operation of the machine. Interface language can be selected during machine set up.

Interlocking Safety Guard

The X-Sharp™ is equipped with an interlocking safety guard that opens and closes automatically. The guard encloses the entire grinding area to protect the operator.



Grinding Space

With a unique safety guard design, the grinding space on the X-Sharp™ is easily accessible from three sides. This makes the loading and unloading of tools quick and easy, and allows straightforward access for cleaning.

Footprint

The small footprint of the X-Sharp™ means the machine can easily be placed next to the punch press. With the automation features of the X-Sharp™, the operator can continue to use the punch press while a tool is being sharpened.

X-SHARP™ GRINDER, ACCESSORIES AND ADAPTERS



X-SHARP™ GRINDER AND ACCESSORIES

DESCRIPTION	CAT NO.	PRICE
Wilson X-Sharp™ Grinder	55106	
Grinding Wheel	55109	
Grinder Coolant (20L) - Low foam, boron-free, synthetic fluid	55311	
Dressing Stone	55117	
Dressing Stone Holder	55319	

X-SHARP™ ADAPTORS

DESCRIPTION	CAT NO.	PRICE
X-Sharp™ Shear Grinding Chuck	55115	
Shear Trumpf® Grinding Adaptor	55308	
Shear WT 90 Grinding Adaptor	55309	
Shear Thick Turret Punches Grinding Adaptor	55310	
A & B Station EXP Punch Adaptor	6990	
Duradie C & D Station Die Blade Adaptor	24321	
Duradie E Station Die Blade Adaptor	24322	
MT-4 TRF Punch Adaptor	25302	
MT-4 TRF Die Adaptor	25304	
MT-5 TRF Punch Adaptor	25935	
MT-5 TRF Die Adaptor	25936	
MT-6 TRF Punch Adaptor	25303	
MT-6 TRF Die Adaptor	25305	
MT-10 TRF Punch Adaptor	26004	
MT-10 TRF Die Adaptor	26021	
TRF Size 1 die & 241 Die Adaptor	26008	
8mm Prima MT P&D Adaptor	6156	
16mm Prima MT P&D Adaptor	6157	
24mm Prima MT P&D Adaptor	6158	
13mm Fab MT P&D Adaptor	6159	
Thk 8-STN MT P&D Adaptor	6812	
Dura Blade Insert D&E Stn Adaptor	6933	

NOTE: FOR A COMPLETE GRINDING ADAPTER LIST, PLEASE CONTACT OUR SALES TEAM



OTHER GRINDING WHEELS AND SPARES

DESCRIPTION	CAT NO.	PRICE
Trumf® QuickSharp CBN Wheel	55118	
Amada® Togu CBN Wheel (Old Style)	55119	
Amada® Togu CBN Wheel (New Style)	WXE8890	
Amada® Togu Wheel Dresser	WXE8890A	
Amada® Togu Wheel Dresser Holder	WXE8890B	

QuickTap®

The Wilson Tool International manufactured **QuickTap®** is the fastest and most reliable tapping tool on the market. It not only taps up to 100 holes per minute, but it's made and serviced by Wilson Tool. That means you get the responsiveness and delivery you expect from the provider you trust.

QuickTap® eliminates costly secondary tapping applications, by producing fast accurate threads on the punch press at any programmed location on the sheet. The tool is designed with an internal fluid injection system that is synchronized with machine stroke, and lasts for up to 20,000 threads before a refill is needed. QuickTap® is designed to enable fast and simple tool set-ups, and all spare parts are available from Wilson Tool.



QUICKTAP® FEATURES:

- Tap a threaded hole with every machine stroke — up to 100 holes per minute in Thick Turret and Strippit PX
- Produce accurate threads at any programmed location on the sheet
- Built-in tapping fluid injection system is synchronized with the machine stroke to reduce wear and breakage
- Tapping injection system enables tapping up to 20,000 threads before refilling
- Taps are easily changed — no disassembly required
- Accepts multiple sized taps
- Taps available in both imperial and metric sizes
- Tool lubrication is made simple through the use of external grease and oil ports
- Currently available for thick turret punch presses, C & D Station, Euromac® C Station
- Compatible with LVD® Strippit PX Series machines and Pullmax 520, 530, 720 and 730 machines.



Scan the QR code to
watch the video





C-STATION		
DESCRIPTION	CAT. NO.	PRICE
C-Station QuickTap® Tapping Kit*	14478	
QuickTap® Tapping Tool Lubricant (1 Pint)	989941	
Prolong Grease	987487	



D-STATION		
DESCRIPTION	CAT. NO.	PRICE
D-Station QuickTap® Tapping Kit*	14480	
QuickTap® Tapping Tool Lubricant (1 Pint)	989941	
Prolong Grease	987487	

C-STATION				
	TIN COATED		TiCN COATED	
STOCK TAPS	CAT. NO.	PRICE	CAT. NO.	PRICE
M2 x 0.4 D5	987500		-	-
M2.5 x 0.45 D5	987466		987467	
M3 x 0.5 D5	987469		987470	
M3.5 x 0.6 D6	987468		-	-
M4 x 0.7 D6	987472		987474	
M5 x 0.8 D7	987475		987476	
M6 x 1 D8*	987480		987481	

D-STATION				
	TIN COATED		TiCN COATED	
STOCK TAPS	CAT. NO.	PRICE	CAT. NO.	PRICE
M6 x 1 D8	987480		987481	
M8 x 1.25 D9	987681		-	-
M10 x 1.5, D10*	987682		-	-

Additional coatings, under/over size taps are available, please contact the Sales Desk or Sales Engineer

C-STATION		
PITCH INSERT ASSEMBLIES	CAT. NO.	PRICE
M2 x 0.40	14451	
M2.5 x 0.45	14452	
M3 x 0.5	14453	
M3.5 x 0.6	14454	
M4 x 0.7	14455	
M5 x .08	14456	
M5 x 0.8 HD	14457	
M6 x 1*	14477	

D-STATION		
PITCH INSERT ASSEMBLIES	CAT. NO.	PRICE
M6 x 1	14640	
M8 x 1.25	14641	
M10 x 1.5*	14642	

* Please discuss application before ordering with the Sales Desk or Sales Engineer

Table Top Cleaners

Material build-up, or “Galling”, has a detrimental impact both on the life of your tooling and on the quality of the parts produced on your punch press.

To protect the investment you have made in punch press and press brake tooling, Wilson Tool offers a range of high quality and innovative Ultrasonic cleaners that removes galling in minutes without damaging the tool surface.

FOR PUNCH PRESS AND PRESS BRAKE TOOLING



Scan the QR code to watch the video



ITEM	DESCRIPTION	CAT NO.	PRICE
M3	1.9L volume, 191mm x 95mm x 50mm basket size	55323	
M12	9L volume, 240mm x 181mm x 120mm basket size	55324	
M30	20.6L volume, 443mm x 238mm x 120mm basket size	55325	
M80i	80L volume, 540mm x 290mm x 310mm basket size	55328	
M120i	120L volume, 540mm x 400mm x 360mm basket size	55329	
M160i	160L volume, 1110mm x 280mm x 310mm basket size	55330	
Corus 120	135L volume, 300mm x 538mm x 442mm basket size	55344	
Corus 240	286L volume, 604mm x 400mm x 516mm basket size	55345	
Corus 360	670L volume, 808mm x 600mm x 658mm basket size	55346	
Corus 480	1200L volume, 1208mm x 800mm x 658mm basket size	55347	
Calvitec HD Pro	20 Litre detergent solution, 10-40% ratio in water	55348	

* Additional detergents are available for other cleaning applications, contact your Sales Rep for more details.

The right tools, right where you need them

The Wilson tool cabinet XSC guarantees maximum organisation with minimum space requirements. Thanks to vertical drawers, the tools are always ready to hand.

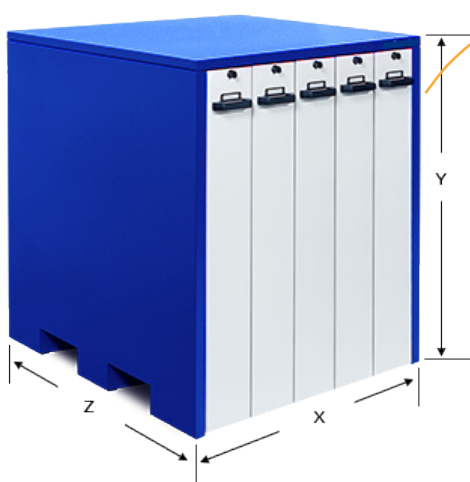
- Ease of access from both sides.
- Perfectly tailored fittings ensure protective storage with an optimum use of space.
- Maximum payload of up to 4,500 kg per cabinet (up to 900 kg per drawer) thanks to extremely robust plastic rollers.
- Transport notches for lift trucks or carts enable quick transport when empty.



HOW TO PICK THE RIGHT CABINET FOR YOU

Key Code: X S C **X Y Z**

XSC - XTREME STORAGE CABINETS		
X	Y	Z
Defines the numbers of drawers	Defines the height of cabinet	Defines the depth of the cabinet
3 Vertical drawers [3]	Small - 1240mm [1]	Standard - 1050 mm [1]
5 Vertical drawers [5]	Medium - 1620 mm [2]	Extra - 1300 mm [2]
	Large - 2140 mm [3]	



Example: XSC **5** (drawers) **2** (1620mm) **1** (1050mm)

Other Examples:

XSC **312** = 3 drawers, small cabinet, extra depth

XSC **521** = 5 drawers, medium cabinet, standard depth

Scan the QR code to
watch the video



XTREME STORAGE CABINETS - WITHOUT DRAWER INSERTS



LARGE CABINET 5 DRAWERS*			
TYPE	DESCRIPTION	CAT NO.	PRICE
XSC531	1040 mm x 2140 mm x 1050 mm	55165	
XSC532	1040 mm x 2140 mm x 1300 mm	55129	



MEDIUM CABINET 5 DRAWERS*			
TYPE	DESCRIPTION	CAT NO.	PRICE
XSC521	1040 mm x 1620 mm x 1050 mm	55357	
XSC522	1040 mm x 1620 mm x 1300 mm	55358	



SMALL CABINET 3 OR 5 DRAWERS*			
TYPE	DESCRIPTION	CAT NO.	PRICE
XSC311	660 mm x 1240 mm x 1050 mm	55125	
XSC312	660 mm x 1240 mm x 1300 mm	55292	
XSC511	1040 mm x 1240 mm x 1050 mm	55164	
XSC512	1040 mm x 1240 mm x 1300 mm	55128	

Note: Each draw holds 900kg

* Special delivery items. Please contact us for delivery price.

XTREME STORAGE CABINETS - FOR TRUMPF® STYLE TOOLING



XTREME STORAGE CABINET SETS FOR TRUMPF® STYLE TOOLING*							
DRAWER INSERT TYPE							
TYPE	DESCRIPTION	CAPACITY PER DRAWER INSERT	QTY				
XDI210	Punches size 1 and 2	80 punches	3	4	4	6	6
XDI211	Dies Size 1	40 dies	4	4	6	8	6
XDI212	Dies size 2 and strippers	10 sets	3	4	5	7	5
XDI214	Special and forming tools	4 full sets	1	2	3	3	4
XDI215	Cartridge assemblies	5 cartridges	1	2	2	5	4
XDI216	Wilson 2-4-1 Punch Inserts	76 pieces					
XDI217	Wilson 2-4-1 Die Blades	60 dies max (size 1 & 2)					
XDI230	Multi-purpose 5 section tray	N/A (misc items)	2	3	3		
XDI231	Parting/Slitting blades		1	2	2		
CABINET TYPE							
XCS311	Cabinet 660w x 1240h x 1050d, 3 vertical drawers		1				
XSC511	Cabinet 1040w x 1240h x 1050d, 5 vertical drawers			1	1		
XSC521	Cabinet 1040w x 1620h x 1050d, 5 vertical drawers					1	
XSC531	Cabinet 1040w x 2140h x 1050d, 5 vertical drawers						1
CAT. NO.			55135	55136	55137	55361	55138
PRICE							

* Special delivery items. Please contact us for delivery price.

XTREME STORAGE CABINETS - FOR TRUMPF® STYLE TOOLING

XTREME DRAWER INSERTS - FOR TRUMPF® STYLE TOOLING		
TYPE - XDI210	CAT. NO. 55143	
For punches size 1 and 2 with or without alignment ring, for 20 - 80 pieces max		
TYPE - XDI211	CAT. NO. 55144	
For dies size 1, for 40 pieces max.		
TYPE - XDI212	CAT. NO. 55145	
For dies size 2 or alignment collars or strippers, for 10 pieces or 10 sets max.		
TYPE - XDI213	CAT. NO. 55146	
For strippers, 40 pieces max.		
TYPE - XDI214	CAT. NO. 55147	
For special and forming tools, fitting dies size 1 and 2, forming dies, punches size 0,1 and 2, punch inserts, tapping modules and strippers, 4 full sets max.		
TYPE - XDI215	CAT. NO. 55148	
For setup cartridges, equipped or unequipped, 5 pieces max.		
TYPE - XDI216	CAT. NO. 55149	
For Wilson 2-4-1 Punch Inserts, 76 pieces max.		
TYPE - XDI217	CAT. NO. 55150	
For Wilson 2-4-1 Die Blades, 60 dies max. (size 1 and 2).		
TYPE - XDI230	CAT. NO. 55151	
Additional storage for on top of vertical drawer for Size 0 punches, alignment collars, inserts; including 5 partiton plates. Available for small (1240mm) and medium (1620mm) cabinets only		
TYPE - XDI231	CAT. NO. 55152	
Additional storage for on top of vertical drawer for Parting and Slitting blades. Available for small (1240mm) and medium (1620mm) cabinets only		

XTREME STORAGE CABINETS - FOR TURRET TOOLING



XTREME STORAGE CABINET SETS FOR TURRET STYLE TOOLING*

DRAWER INSERT TYPE

TYPE	DESCRIPTION	CAPACITY PER DRAWER INSERT	QTY	
XDI310	A station punch assemblies	20 punch assemblies	2	2
XDI311	A station dies	80 dies	1	1
XD1312	A station HP (Series 90) punches and dies	18 punches, 36 dies, 18 strippers	1	
XDI313	B station punch assemblies	20 Punch Assemblies	2	2
XDI314	B station dies	45 dies	2	2
XDI315	B station punches and dies	12 punch assemblies, 12 dies		
XDI316	B station HP (Series 90) punches and dies	10 punches, 20 dies	1	
XDI317	C station punch assemblies and dies	6 punch assemblies, 6 dies, 6 strippers	2	1
XDI318	C station HP (Series 90) punches	38 punches		
XDI319	C station HP (Series 90) punches and dies	13 punches, 13 dies, 13 strippers	1	
XDI320	C station Amada® style punches	38 punches		
XDI321	C station Amada® style punches and dies	12 punches, 12 dies, 12 strippers		1
XDI322	D station punch assemblies and dies	4 punch assemblies, 4 dies	2	2
XDI323	D station HP (Series 90) punches	11 punches		
XDI324	D station HP (Series 90) punches and dies	6 punches, 6 dies, 6 strippers	1	
XDI325	D station Amada® style punches and dies	5 punches, 5 dies, 5 strippers		1
XDI326	E station punch assemblies and dies	4 punches, 4 dies	1	1
XDI327	E station HP (Series 90) punches and dies	5 punches, 5 dies	1	
XDI328	E station Amada® style punches and dies	4 punches, 4 dies, 4 strippers		1
XIS360	Multi-purpose 5 section tray	N/A (miscellaneous items)	5	5
CABINET TYPE				
XSC511	Cabinet 1040w x 1240h x 1050d, 5 vertical drawers		1	1
			CAT. NO.	55139
			PRICE	55140

* Special delivery items. Please contact us for delivery price.

XTREME DRAWER INSERTS - FOR TURRET TOOLING

XTREME DRAWER INSERTS - FOR TURRET STYLE TOOLING		
TYPE - XDI310	CAT. NO. 55153	
For A station punch assemblies, 20 punch assemblies max.		
TYPE - XDI311	CAT. NO. 55154	
For A station dies, 80 dies max.		
TYPE - XDI312	CAT. NO. 55155	
For A station HP (Series 90) punches and dies, 18 punches with strippers, 36 dies max.		
TYPE - XDI313	CAT. NO. 55156	
For B station punch assemblies, 20 punch assemblies max.		
TYPE - XDI314	CAT. NO. 55157	
For B station dies, 45 dies max.		
TYPE - XDI315	CAT. NO. 55158	
For B station punch assemblies and dies, 12 punch assemblies and 12 dies max.		
TYPE - XDI316	CAT. NO. 55159	
For B station HP (Series 90) punches and dies, 10 punches and 20 dies max.		
TYPE - XDI317	CAT. NO. 55160	
For C station punch assemblies and dies, 6 punches and 6 dies max.		
TYPE - XDI318	CAT. NO. 55161	
For C station HP (Series 90) punches, 38 punches max.		
TYPE - XDI319	CAT. NO. 55196	
For C station HP (Series 90) punches and dies, 13 punches with strippers and 13 dies max.		

XTREME DRAWER INSERTS - FOR TURRET TOOLING

XTREME DRAWER INSERTS - FOR TURRET STYLE TOOLING		
TYPE - XDI320	CAT. NO. 55197	
For C station Amada® style punches, 38 punches max.		
TYPE - XDI321	CAT. NO. 55198	
For C station Amada® style punches, dies and strippers; 12 punches, 12 dies and 12 strippers max.		
TYPE - XDI322	CAT. NO. 55199	
For D station punch assemblies and dies, 4 punches and 4 dies max.		
TYPE - XDI323	CAT. NO. 55200	
For D station HP (Series 90) punches, 11 punches max.		
TYPE - XDI324	CAT. NO. 55201	
For D station HP (Series 90) punch and dies, 6 punches with strippers and 6 dies max.		
TYPE - XDI325	CAT. NO. 55202	
For D station Amada® style punches, dies and strippers; 5 punches, 5 dies and 5 strippers max.		
TYPE - XDI326	CAT. NO. 55203	
For E station punch assemblies and dies, 4 punches and 4 dies max.		
TYPE - XDI327	CAT. NO. 55204	
For E station HP (Series 90) punches and dies, 5 punches, 5 dies and 5 strippers max.		
TYPE - XDI328	CAT. NO. 55205	
For E station Amada® style punches, dies and strippers; 4 punches, 4 dies and 4 strippers max.		
TYPE - XDI360	CAT. NO. 55206	
Additional storage for on top of vertical drawer for Zip-Mar adhesive disks, slug ejectors, shims; including 5 partitions. Available for small (1240mm) and medium (1620mm) cabinets only		

XTREME STORAGE CABINETS & DRAWERS - FOR PRESS BRAKE TOOLING

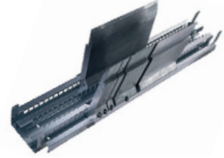
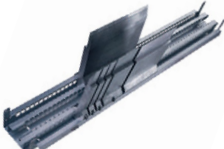


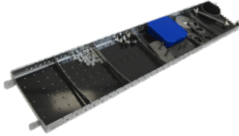


XTREME STORAGE CABINET SETS FOR PRESS BRAKE TOOLING*

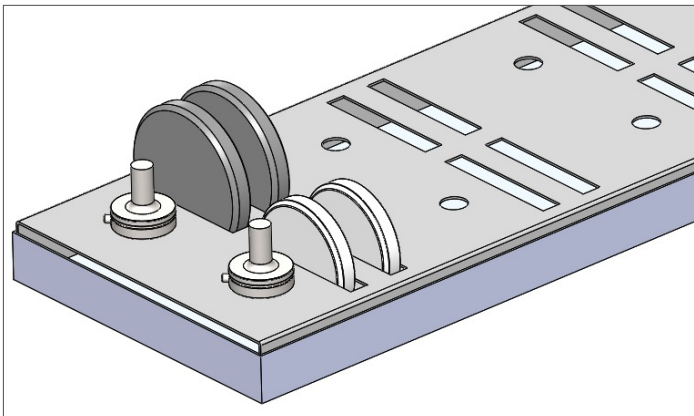
DRAWER INSERT TYPE								
TYPE	DESCRIPTION	QTY						
XDI102	Press Brake tools (approx 1.7m per)	9		15		20		20
XDI103	Press Brake tools (approx 2.2m per)		9		15		20	
XDI401	Tray for storage boxes							10
CABINET TYPE								
XSC311	Cabinet 660w x 1240h x 1050d, 3 vertical drawers	1						
XSC312	Cabinet 660w x 1240h x 1300d, 3 vertical drawers		1					
XSC511	Cabinet 1040w x 1240h x 1050d, 5 vertical drawers			1				
XSC512	Cabinet 1040w x 1240h x 1300d, 5 vertical drawers				1			
XSC521	Cabinet 1040w x 1620h x 1050d, 5 vertical drawers					1		
XSC522	Cabinet 1040w x 1620h x 1300d, 5 vertical drawer						1	
XSC531	Cabinet 1040w x 2140h x 1050d, 5 vertical drawer							1
Press Brake Tool Capacity		15.3 m	19.8 m	25.5 m	33 m	34 m	44 m	34 m
CAT. NO.		55130	55293	55131	55133	55359	55360	55132
PRICE								

* Special delivery items. Please contact us for delivery price.

XTREME DRAWER INSERTS - FOR PRESS BRAKE TOOLING

TYPE - XDI102	CAT. NO. 55141	
For approx. 1.7 metres of tools, fits in XSC311, XSC511, XSC521 & XSC531.		
TYPE - XDI103	CAT. NO. 55142	
For approx. 2.2 metres of tools, fits in XSC312, XSC512, XSC522 & XSC532.		

XTREME DRAWER INSERTS - FOR WORKSHOP EQUIPMENT		
TYPE - XDI400	CAT. NO. 55207	
Multipurpose tool tray, including 5 partitions. Fits in XSC311, XSC511, XSC521 & XSC531		
TYPE - XDI401	CAT. NO. 55208	
Empty tray; fits in XSC311, XSC511, XSC521 & XSC531.		
TYPE - XDI402	CAT. NO. 55209	
Empty tray; fits in XSC312, XSC512, XSC522 & XSC532.		



If the current range of drawer inserts does not meet your tooling requirements, we can offer custom made units to suit specific tooling requirements, quantities, and available in different colours.

Contact the Sales desk for more information on
sales@wilsontool.eu.com

STORAGE BOXES AND PERFORATED WALLS



Box size 4

Box size 7

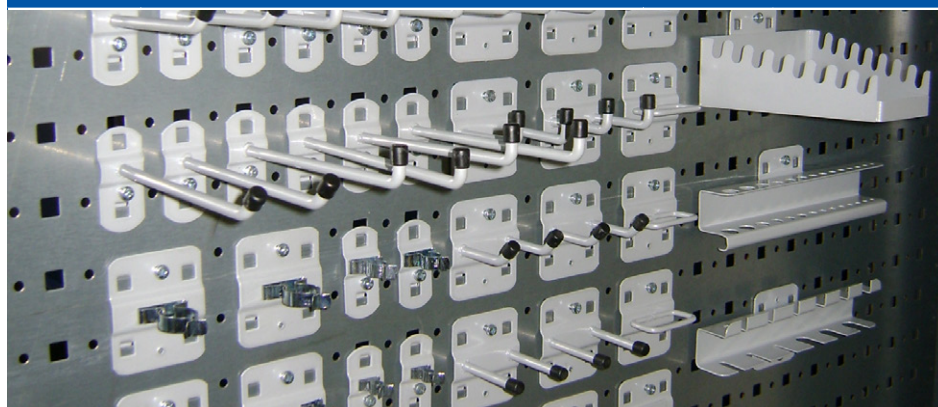
Box size 8



Perforated Wall

TYPE	DESCRIPTION	SIZE (mm)	CAT. NO.	PRICE
XSB210	Box size 8	85 x 105 x 45	55210	
XSB211	Box size 7	160 x 100 x 75	55211	
XSB212	Box size 4	350 x 220 x 145	55212	
XPW440	Perforated wall for XSC311, XSC511, XSC531	910 x 250	55213	
XPW441	Perforated wall for XSC311, XSC511, XSC531	910 x 895	55214	
XPW442	Perforated wall for XSC531	910 x 1795	55215	
XPW443	Perforated wall for XSC512, XSC532	1162 x 895	55216	
XPW444	Perforated wall for XSC532	1162 x 1795	55217	

HOOK SETS FOR PERFORATED WALLS



TYPE	SET	CAT. NO.	PRICE
XHS012	12 Holders	55257	
XHS018	18 Holders	55258	
XHS028	28 Holders	55259	
XHS040	40 Holders	55260	
XHS050	50 Holders	55261	

All Hook Sets include holders for spanners, screw drivers, drills, pliers and various types of tooling



XWT 580 BASIC TROLLEY*

Basic model including 1 drawer, 1 level shelf and 1 rubber mat. Trolley sides have perforated walls for "shadow board" tool storage (compatible with all drawer inserts) except XDI 103 and XDI 402

Colour: blue RAL5002 and grey RAL9006

Total payload: 400 kg

Dimensions (mm): 582w x 922d x 922h

CAT. NO. 55272



XWT 581 PRESS BRAKE TROLLEY*

Press Brake - including 1 drawer, 2 sloped shelves with middle partition and 1 rubber mat. Trolley sides have perforated walls for "shadow board" tool storage. Compatible with hook sets.

Colour: blue RAL5002 and grey RAL9006

Total payload: 400 kg

Dimensions (mm): 582w x 922d x 922h

CAT. NO. 55273



XWT 582 PRESS BRAKE PLUS TROLLEY*

Press Brake - including 1 drawer, 2 sloped shelves with middle partition and 3 tool carriers. Trolley sides have perforated walls for "shadow board" tool storage. Compatible with hook sets.

Colour: blue RAL5002 and grey RAL9006

Total payload: 400 kg

Dimensions (mm): 582w x 922d x 922h

CAT. NO. 55274



XWT 583 TRUMPF® STYLE TROLLEY*

Trumpf style - including 1 drawer, 1 level shelf and 9 tool retainers for cartridge assemblies. Capacity 45 cartridges. Trolley sides have perforated walls for "shadow board" tool storage. Compatible with hook sets.

Colour: blue RAL5002 and grey RAL9006

Total payload: 400 kg

Dimensions (mm): 582w x 922d x 922h

CAT. NO. 55275

* Special delivery items. Please contact us for delivery price.

TOOL HANDLING AND STORAGE



XWT 584 TURRET STYLE TROLLEY*

Turret style - including 1 drawer, 1 level shelf and 3 tool retainers (XDI315, XDI317 and XDI322). Capacity 12 x B station punches/dies, 6 x C station punches/dies and 4 x D station punches/dies. Trolley sides have perforated walls for "shadow board" tool storage. Compatible with hook sets.

Colour: blue RAL5002 and grey RAL9006

Total payload: 400 kg

Dimensions (mm): 582w x 922d x 922h

CAT. NO. 55276

* Special delivery items. Please contact us for delivery price.



XWT 585 PARTS STORING TROLLEY*

Including 1 drawer, 2 sloped shelves, 3 small shelves, 20 storage boxes of size 4 and 24 storage boxes of size 7. Trolley sides have perforated walls for "shadow board" tool storage. Compatible with hook sets.

Colour: blue RAL5002 and grey RAL9006

Total payload: 400 kg

Dimensions (mm): 582w x 922d x 1370h

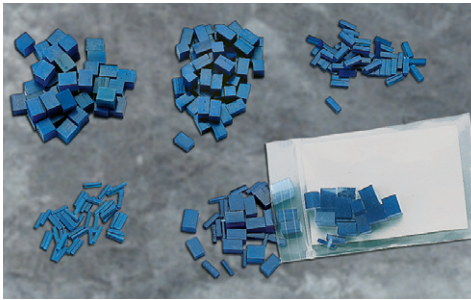
CAT. NO. 55277



ZIP-MAR™ ADHESIVE DISCS

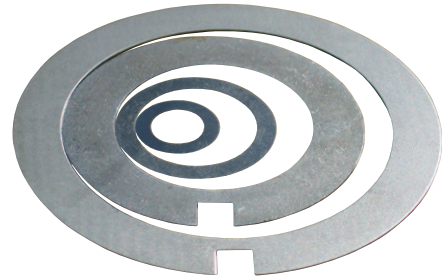
Zip Mar™ reduces the costly marring of material by the stripper. The disk is applied to the bottom of a standard stripping guide or stripper plate. A hole is then cut with a sharp knife to reveal the existing hole in the stripper.

STATION	QTY	CAT. NO.	PRICE
12.7mm (A)	pk (10)	6083	
31.75mm (B)	pk (10)	6084	
50.8mm (C)	pk (10)	6085	
88.9mm (D)	pk (10)	6086	
114.3mm (E)	pk (10)	6087	
15.2 x 30.5cm Sheet	1	6108	



SLUG EJECTORS

HOLE DIA. IN PUNCH	QTY	CAT. NO.	PRICE
3.2mm	50	6116	
4.8mm	50	6117	
9.5mm	50	6118	
12.7mm	50	6119	
Assortment	50	6410	



THIN TURRET / STRIPPIT / FAB DIE SHIMS

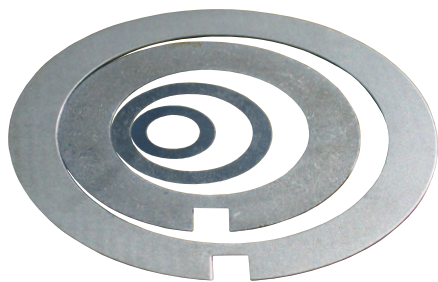
THICKNESS	QTY	CAT. NO.	PRICE
B Station (1 1/4" Station)			
0.25mm	1	2097	
0.25mm	25	2209	
0.75mm	1	2723	
0.75mm	25	2724	
1.5mm	1	2100	
1.5mm	15	2173	
D Station (3 1/2" Station)			
0.25mm	1	2081	
0.25mm	5	2211	
0.75mm	1	2727	
0.75mm	5	2728	
1.5mm	1	2084	
1.5mm	5	2175	
D Station (3 1/2" Station) 8 station MT			
0.76mm	1	6200	
0.25mm	1	6199	
0.25mm	15	6813	
0.75mm	15	6814	



T-HANDLE EXTRACTOR

For large station guide assemblies

CAT. NO. 6483



THICK TURRET DIE SHIMS

THICKNESS	QTY	CAT. NO.	PRICE
A Station Die			
0.25mm	1	2101	
0.25mm	25	2208	
0.75mm	1	2721	
0.75mm	25	2722	
1.5mm	1	2104	
1.5mm	15	2172	
B Station Die			
0.25mm	1	2097	
0.25mm	25	2209	
0.75mm	1	2723	
0.75mm	25	2724	
1.5mm	1	2100	
1.5mm	25	2173	
C Station Die			
0.25mm	1	2089	
0.25mm	10	2210	
0.75mm	1	2725	
0.75mm	10	2726	
1.5mm	1	2092	
1.5mm	10	2174	
D Station Die			
0.25mm	1	2081	
0.25mm	5	2211	
0.75mm	1	2727	
0.75mm	5	2728	
1.5mm	1	2084	
1.5mm	5	2175	

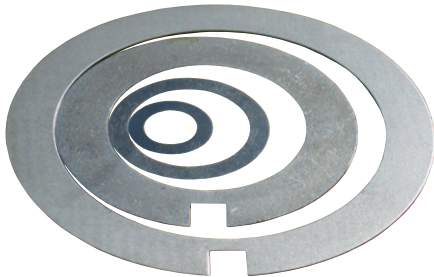
THICK TURRET DIE SHIMS cont.

THICKNESS	QTY	CAT. NO.	PRICE
E Station Die			
0.25mm	1	2073	
0.25mm	5	2212	
0.75mm	1	2729	
0.75mm	5	2730	
1.5mm	1	2076	
1.5mm	5	2176	

THICK TURRET DIE SHIMS - DURADIE

PACKAGE DESCRIPTION	CAT. NO.	PRICE
Standard C Station		
2 x 1.0mm, 2 x 0.5mm, 1 x 0.4mm, 1 x 0.3mm, 2 x 0.1mm	12995	
Heavy Duty C Station		
2 x 1.0mm, 2 x 0.5mm, 1 x 0.4mm, 1 x 0.3mm, 2 x 0.1mm	12994	
Standard D Station		
2 x 1.0mm, 2 x 0.5mm, 1 x 0.4mm, 1 x 0.3mm, 2 x 0.1mm	13012	
Heavy Duty D Station		
2 x 1.0mm, 2 x 0.5mm, 1 x 0.4mm, 1 x 0.3mm, 2 x 0.1mm	13011	
Standard E Station		
2 x 1.0mm, 2 x 0.5mm, 1 x 0.4mm, 1 x 0.3mm, 2 x 0.1mm	13017	
Heavy Duty E Station		
2 x 1.0mm, 2 x 0.5mm, 1 x 0.4mm, 1 x 0.3mm, 2 x 0.1mm	13020	

THICK TURRET DIE SHIMS - PRIMA POWER MULTI-TOOLS			
THICKNESS	QTY	CAT. NO.	PRICE
MT 12 and 20 - 8 (Round)			
0.25mm	1	6802	
0.25mm	15	6817	
0.76mm	1	6803	
0.76mm	15	6818	
MT 12 and 20 - 8 (Shape)			
0.25mm	1	6804	
0.25mm	15	6819	
0.76mm	1	6805	
0.76mm	15	6820	
MT 6 and 10 - 16			
0.25mm	1	6806	
0.25mm	15	6821	
0.76mm	1	6807	
0.76mm	15	6822	
MT 6 and 8 - 24			
0.25mm	1	6808	
0.25mm	15	6823	
0.76mm	1	6809	
0.76mm	15	6824	
Thick 1 1/4" MT5			
0.25mm	1	6810	
0.76mm	1	6811	
MT 8i - 16			
0.25mm	1	6800	
0.25mm	15	6815	
0.76mm	1	6801	
0.76mm	15	6816	

			
TRUMPF® SIZE 1 AND 2 DIE SHIMS			
SIZE 1 DIE			
STATION	QTY	CAT. NO.	PRICE
0.1mm	1	25299	
0.3mm	1	25300	
0.5mm	1	25301	
PACKAGE DESCRIPTION		CAT. NO.	PRICE
2 x 0.1mm, 1 x 0.3mm, 1 x 0.5mm		25181	
2 x 0.1mm, 1 x 0.3mm, 2 x 0.5mm		62023	
SIZE 2 DIE			
STATION	QTY	CAT. NO.	PRICE
0.1mm	1	25296	
0.3mm	1	25297	
0.5mm	1	25298	
PACKAGE DESCRIPTION		CAT. NO.	PRICE
2 x 0.1mm, 1 x 0.3mm, 1 x 0.5mm		25182	
2 x 0.1mm, 1 x 0.3mm, 2 x 0.5mm		62024	

PUNCH PRESS TOOLING ACCESSORIES

TRUMPF® SIZE 2-4-1 DIE BLADE SHIMS		
PACK DESCRIPTION	CAT. NO.	PRICE
2-4-1 Die Blade - 0 - 40mm		
1 x 1.0mm, 2 x 0.5mm, 1 x 0.4mm, 1 x 0.3mm, 2 x 0.1mm	25983	
2-4-1 Die Blade - 40 - 56mm		
1 x 1.0mm, 2 x 0.5mm, 1 x 0.4mm, 1 x 0.3mm, 2 x 0.1mm	25984	
2-4-1 Die Blade - 40 - 56mm Heavy Duty		
1 x 1.0mm, 2 x 0.5mm, 1 x 0.4mm, 1 x 0.3mm, 2 x 0.1mm	25992-S	

TRUMPF® MULTI-TOOL DIE SHIMS		
PACK DESCRIPTION	CAT. NO.	PRICE
4 Station Multi-Tool Die		
2 x 0.1mm, 1 x 0.3mm, 1 x 0.5mm	25389	
5 Station Multi-Tool Die		
2 x 0.1mm, 1 x 0.3mm, 1 x 0.5mm	26003	
6 Station Multi-Tool Die		
2 x 0.1mm, 1 x 0.3mm, 2 x 0.5mm	25388	
10 Station Multi-Tool Die		
2 x 0.1mm, 1 x 0.3mm, 1 x 0.5mm	25995	

TRUMPF® SLITTING / PARTING TOOL DIE SHIMS			
SLITTING TOOL DIE - 2 PIECES DIE BLADE			
THICKNESS	QTY	CAT. NO.	PRICE
0.3mm	1	25185	
PARTING TOOL SIZES 30 X 5MM AND 56 X 5MM DIE - 1 PIECE DIE BLADE			
PACKAGE DESCRIPTION	CAT. NO.	PRICE	
1 x 0.5mm, 1 x 0.3mm, 1 x 0.2mm	25439		

TRUMPF® BRUSHED DIE SHIMS		
PACK DESCRIPTION	CAT. NO.	PRICE
10mm Brush Insert		
1 x 0.1mm, 1 x 0.3mm	25927	
15mm Brush Insert		
1 x 0.1mm, 1 x 0.3mm	25928	
24mm Brush Insert		
1 x 0.1mm, 1 x 0.3mm	25929	
Ring Brush		
1 x 1.0mm, 2 x 0.5mm, 2 x 0.1mm	25948	



DEMAGNETISER

When a punch and die have been re-ground they will retain a certain amount of magnetism after being held by a magnetic chuck. Subsequent operations may necessitate the efficient demagnetising of these parts and the Wilson Tool demagnetiser will prove invaluable for this purpose.

POWER LEAD	CAT. NO.	PRICE
UK (3 PIN)	24304	
EU (2 PIN)	24305	



*Image shows Cat. No. 6034 & 6040 together - parts are sold separately

SHEAR GRINDING FIXTURE

With your large investment in tooling, why not get the most life out of it, and reduce your tooling costs with the finest re-grinding?

- Easy to adjust angle setting for shear grinding.
- Ability to resharpen punches without full disassembly of punch assemblies
- No need to buy a dedicated piece of machinery just for re-sharpening. The surface grinder can be used for many other applications.
- Easy to use instruction sheet with grinding tips.

CAT. NO. 6034

FAB AND THIN TURRET TOOLING		
PACK DESCRIPTION	CAT. NO.	PRICE
5/8" Tooling Sleeve Adapter	6046	
B Station Tooling Punch and Die Adapter	6044	
D Station Tooling Punch Holder	6041	
C and D Station Full Body Tooling	6039	
Universal Notch Punch Holder	6071	
THICK TURRET TOOLING		
PACK DESCRIPTION	CAT. NO.	PRICE
A Station Tooling Sleeve Adapter	6043	
A Station Die Adapter	6088	
B Station Tooling Punch and Die Adapter	6042	
C, D and E Station "Old Style" Punch Holder	6039	
"Series 80/90" Tooling Punch Holder	6040	
C and D Station Die Adapter	24017	
Diamond Holder and Diamond*	24003	
Replacement Diamond for 24003	24004	

*B Station Tooling Adapter Required

TRUMPF® STYLE TOOLING		
PACK DESCRIPTION	CAT. NO.	PRICE
Punch Holder	6089	
Die, Size 1	25365	
Die, size 2	25366	
Multi-Tool Punch (MT-6)**	25303	
Multi-Tool Die (MT-6)**	25305	
Multi-Tool Punch (MT-4)**	25304	
Multi-Tool Die (MT-4)**	25302	
Multi-Tool Punch (MT-5)**	25935	
Multi-Tool Die (MT-5)**	25936	
Multi-Tool Punch (MT-10)**	26004	
Multi-Tool Die (MT-10)**	26021	
LVD Style Orbit Punch**	62124	
LVD Style Orbit Die**	62125	

** Trumf® Punch Adapter Required

PUNCH PRESS MACHINE ACCESSORIES



ALIGNMENT TOOLS FOR AMADA®
SINGLE TRACK MACHINES

STATION	CAT. NO.	PRICE	CAT. NO.	PRICE
	UPPER UNIT		LOWER UNIT	
12.7mm (A)	2597		2598	
31.75mm (B)	2599		495	



ALIGNMENT TOOLS

STATION	CAT. NO.	PRICE	CAT. NO.	PRICE
	UPPER UNIT		LOWER UNIT	
50.8mm (C)	1840		1841	
88.9mm (D)	1947		1948	
114.3mm (E)	1949		1950	
152.4mm (F)	2290		2291	



ALIGNMENT TOOLS FOR AMADA®
MULTIPLE TRACK MACHINES

STATION	CAT. NO.	PRICE
12.7mm (A)	2601*	
31.75mm (B)	2602*	

*NOTE: Two of each Cat. No. required

In order to align A and B Stations, you need one or two tools for each station size, depending on the type of machine. For a single track turret, one tool is required to align each station. For a multiple track machine, two tools are required to align each station (one in the front of the station and one in the back).



BALL RIDING DIE

The "Ball Riding Die" which consists of a spring loaded ball, has been designed to help eliminate several problems. The most common problems result from the higher height of the form-up dies.

These problems are:

- Sheet hang-up from the material running into a higher die, such as a forming tool.
- Sheet deformation from punching next to dies of different heights.
- Damage to forming die inserts when the die cap receives uneven loading during punching in neighbouring stations.

To reduce sheet and tool damage in forming applications, two of these dies are placed in stations surrounding the forming tool. When the sheet approaches the form-up die, it is lifted by the ball riding die. When the forming operation begins, the ball in the surrounding die recesses with the sheet. Once the form has been achieved and the tool strips, the spring loaded balls lift the sheet back to its original height. This allows the sheet to move more freely through the turret, avoiding collisions with the form-up tool.

Placing these dies into the vacant stations on a turret loaded on one side can also eliminate material crashes.

STATION	CAT. NO.	PRICE
12.7mm (A)	2375	
31.75mm (B)	482	
50.8mm (C)	13591	
88.9mm (D)	13592	
114.3mm (E)	13593	



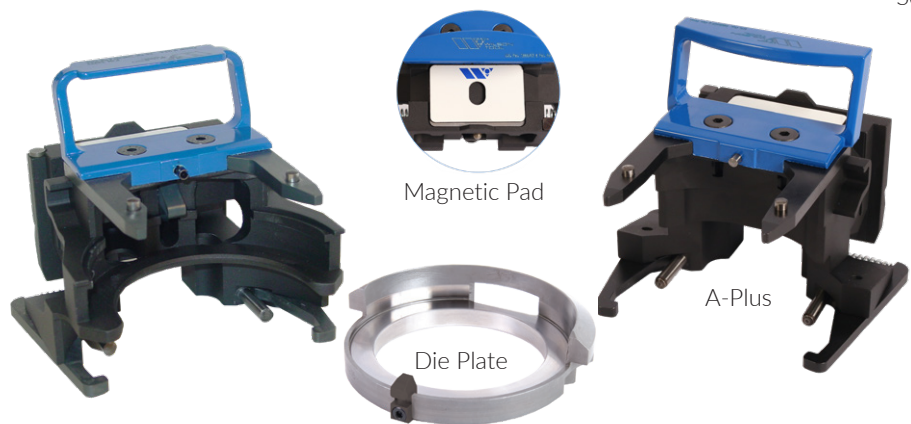
BRUSH DIE

The primary use for brush die is in applications where any marking that might be caused by ball riding dies is not acceptable

STATION	CAT. NO.	PRICE
12.7mm (A)	2760	
31.75mm (B)	2761	
50.8mm (C)	2762	
88.9mm (D)	2763	
114.3mm (E)	2764	

PUNCH PRESS MACHINE ACCESSORIES

Scan the QR code to see parts drawing

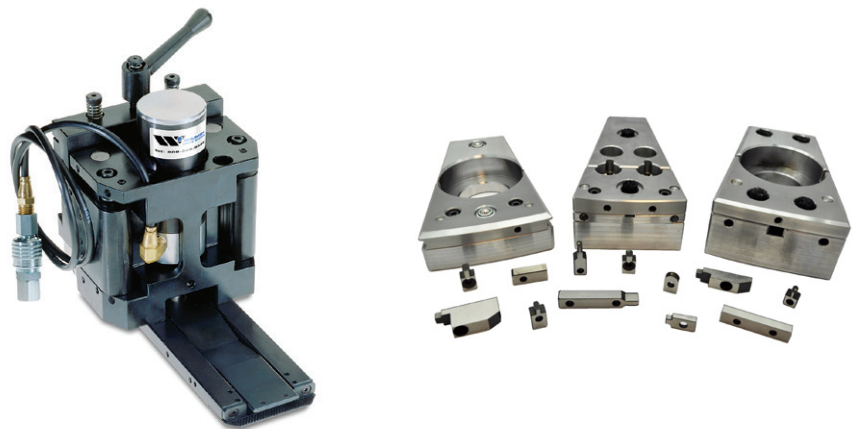


WILSON TRUMPF® STYLE CARTRIDGE

Enhance your punch press productivity with new Trumf® style tool cartridges from Wilson Tool. Designed for strength and performance, the Wilson Tool Trumf® style cartridge* is constructed of 6061 T6 aluminium - a strong yet lightweight alternative to plastic or steel cartridges. Wilson Cartridges also have a hard anodised finish for improved wear protection and scratch resistance.

DESCRIPTION	CAT. NO.	PRICE
Trumf® Style Tool Cartridge Full Assembly excluding Die Shoe	26838	
Trumf® A-Plus® Style Tool Cartridge Full Assembly excluding Die Shoe	26836	
GL Dies Shoe Assembly	26731	
Cartridge Magnetic Pad (5 Pack)	26259	
Trumf® GL Die PLate Key Assembly Only	26730	

Note - Different coloured handles for quick tool identification are available, contact your local sales desk for details



WILSON XTRA CLAMP PARTS AND MACHINE ACCESSORIES

You have always been able to depend on Wilson Tool for innovative, precision engineered tooling for your punch press and press brake machines. Now, through Wilson Xtra, you can buy replacement Clamp Assemblies and Turret Keys for your turret punch press machine.

Also for your Amada® machines, we are now able to offer a comprehensive range of replacement parts in addition to clamp assemblies and turret keys. These include Die holders, machine spares, laser consumables and Press brake work stoppers.

Contact Wilson Tool for more information about our Amada® replacement parts range.



THICK TURRET ASSEMBLY FIXTURE C AND D STATIONS

Bench mounted aid for assembling and maintaining C & D Station Thick Turret guide assemblies.

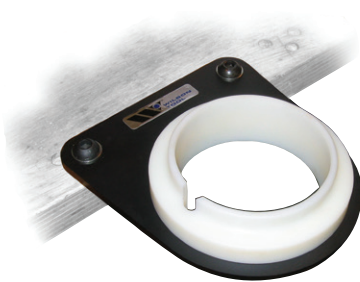
CAT. NO. 24162



THICK/THIN TURRET AND STRIPPIT NYLON VICE JAWS

Tailored vice jaws to aid in the assembly and maintenance of A and B Station Thick Turret and 1 1/4" Station Thin/Strippit style punch assemblies.

CAT. NO. 24001



STRIPPIT STYLE 3 1/2" ASSEMBLY FIXTURE

Bench mounted aid for assembling and maintaining 3 1/2" Strippit style guide assemblies.

CAT. NO. 24161



TRUMPF® STYLE ASSEMBLY FIXTURE

Bench mounted aid for assembling and maintaining 2-4-1 punch assemblies and Trumpf® style tooling.

CAT. NO. 24182



PULLMAX STYLE ASSEMBLY FIXTURE

Bench mounted aid for assembling and maintaining Pullmax style tool holders and punch assemblies.

CAT. NO. 24183



INSERTION TOOL

This tool is used to load punch and stripper in to the cartridge.

CAT. NO. 25566

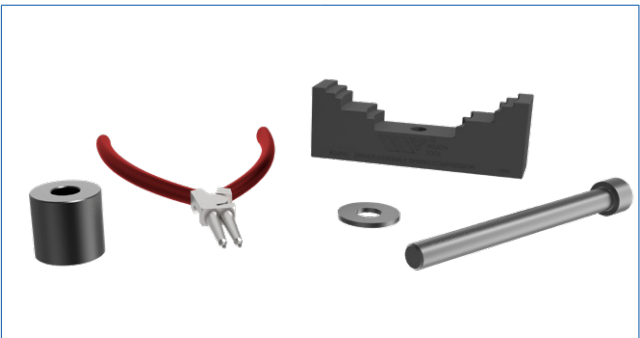
TOOL ASSEMBLY AND ALIGNMENT



SPRING DISASSEMBLY TOOL

For use with Series 90 large station guide assemblies.

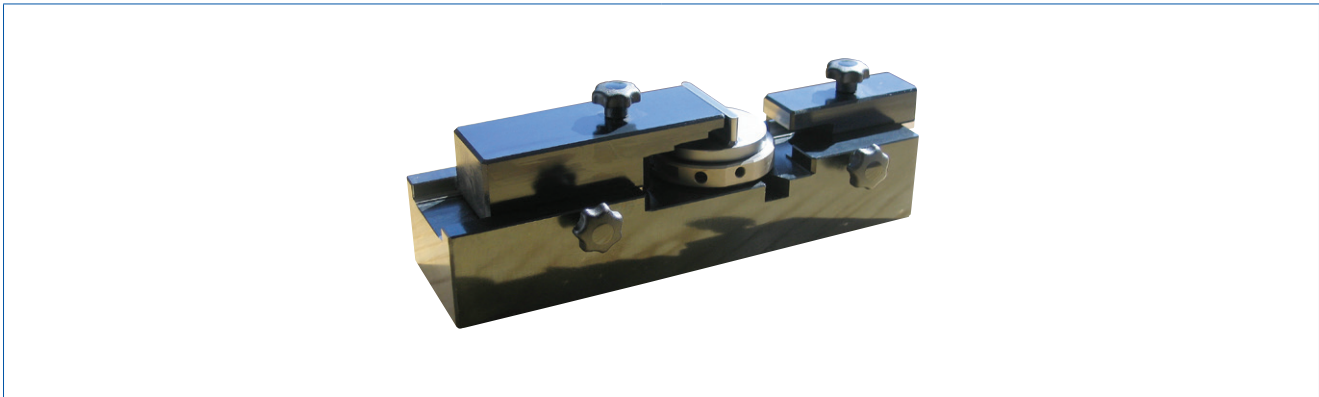
CAT. NO. 8104



DRIVER ASSEMBLY SPRING COMPRESSION KIT

For use with HP Driver Assembly.

CAT. NO. 6940



ALIGNMENT FIXTURE FOR TRUMPF® STYLE TOOLING

The alternative to the Trumpf® Quick Set at a fraction of the cost!

Wilson Tool have designed a simpler setting fixture which is very accurate and robust, yet extremely portable. The body of the fixture is precision made and durable, due to the fact that there are very few wearable or moveable parts. The fixture is also very versatile and can accommodate many types of Trumpf® punches, including Size I, Size II, Minimatic style, Heavy Duty, Manual, plus those forming tools which do not have integral collars. The fixture can also be used with flat or shear punches. It is very easy to use and comes with accessories including a regrind length chart.

The quick and easy solution from Wilson Tool for setting up your Trumpf® punches.

CAT. NO. 24186



DIGITAL PROTRACTORS

Lightweight, easy-to-use, highly accurate protractors measure angles from 0 to 360 degrees with digital precision.

Features include:

- Accuracy: +/- 0.1 degrees.
- Digital precision from 0 to 360 degrees
- Set angles in 0.05 degree increments
- Strong magnets on all four edge surfaces
- Front locking lever to hold the arm position while transferring measurements
- A hold function, ensuring you never lose your reading and reverse reading capability for those hard to calculate angles

DESCRIPTION	CAT. NO.	PRICE
Measuring 101.6mm	972632	
Measuring 203.2mm	972633	
Measuring 304.8mm	972634	
Set (101.6mm, 203.2mm & 304.8mm)	972635	



DIGITAL EASY READ CALIPER

- This caliper has a large digital readout (22mm x 60mm) and can be easily set to read in millimeters, inches and fractions (1/64)
- Measuring range 0 - 150mm
- Accuracy: 0.025mm

CAT. NO. 974118



DIGITAL THICKNESS GAUGE

Quick check convenience item for shop personnel giving the ability to quickly check sheet gauge, thickness over form and burrs, and costs less than a micrometer.

Features include:

- Compact size with spring loaded jaw mechanism
- Accuracy to 0.05mm
- Readings in millimeters, inches and fractions (1/64)
- Scissor action is much faster to use than a micrometer.

CAT. NO. 974117



DIGITAL ANGLE CUBE

- The compact size of the Digital Cube allows you to quickly read bend angles.
- Real time display of angle comparison.
- Magnets on three sides for attachment flexibility.
- Self rotating display for 180° readings.

CAT. NO. 974119

WILSON X-CEL SHEET LUBRICANT

Wilson Tool X-Cel is a high quality synthetic lubricant used for sheet metal nibbling, shearing and forming operations. Dissolved in water, X-Cel makes a solution with high resistance to bacterial degradation and keeps tool systems and exposed parts of the machines clean and lubricated.

Benefits of using Wilson X-Cel Sheet Lubricant:

- Increased tool life
- Easier stripping
- Reduced sheet marking on forming operations
- Non-hazardous in diluted form
- Not explosive or flammable

Physical Characteristics

- Chlorine free
- Hexahydrotriazine free
- Secondary amine free
- Mineral oil free
- Dissolves and disperses quickly in water

X-CEL 5 LTR CONCENTRATE

Wilson X-Cel lubricant supplied as a concentrate in a 5 litre bottle. The recommended normal dilution ratio is 1:10 with water for most operations. Wilson X-Cel has a natural tendency to dissolve and disperse quickly in water when a solution is prepared whether manually or by a blending device. Preparing a solution is also possible using suitable mixing devices (Venturi or volumetric type). An evaluation of the concentration of a mix is easily carried out by a refractometer.

CAT. NO. 24316

X-CEL 1 LTR CONCENTRATE

Pre-diluted Wilson X-Cel lubricant in a 1 litre, ready-to-use trigger spray.

CAT. NO. 24315



PUNCH LUBRICANT

For lubricating punch and guide assemblies.

CAT. NO. 6055



X-CEL TAPPING LUBRICANT FE - 5 LTR JERRY CAN

X-Cel Tapping Lubricant FE is a neat, extreme-pressure machine tool lubricant developed for thread forming on mild steel, stainless steel and high alloyed steels. To be used in the oil reservoir of your Trumpf® machine for tapping applications.

CAT. NO. 55262

X-CEL TAPPING LUBRICANT AL - 5 LTR JERRY CAN

X-Cel Tapping Lubricant AL is a neat, extreme-pressure machine tool lubricant developed for thread forming on aluminium alloy, copper, brass and non ferrous materials.

CAT. NO. 55264

X-DRIVE GREASE 400G CARTRIDGE

X-Drive Grease lubricant is a very high performance grease for the lubrication of tapping tool gears.

CAT. NO. 55270



ECO ENDURE OIL

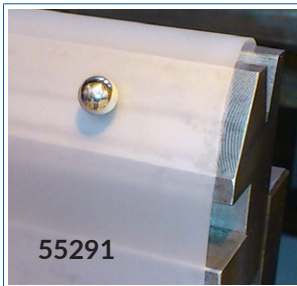
Recommended for all punching operations and to get the maximum tap and punch life possible

LITRES	CAT. NO.	PRICE
5 L	55402	
25 L	55403	

VAPOUR OIL

The preferred oil for when evaporation off the sheet is required.

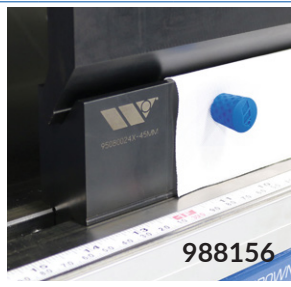
LITRES	CAT. NO.	PRICE
5 L	14648	
25 L	14649	



RETENTION MAGNETS

A low cost effective way of securing urethane sheets to press brake dies using high quality permanent magnets.

DESCRIPTION	CAT. NO.	PRICE
Magnets (Pack of 10)	55291	
Magnet (Quantity 1)	988156	



BENDING FABRIC

A long-life coated 0.2mm fabric to protect your products from die impressions during the bending process. Forms a protective layer between sheet and die without causing any angular deviation.

DESCRIPTION	CAT. NO.	PRICE
12.5m length x 120mm width	55335	
50m length x 120mm width	55336	



CLEANING HAND PAD

Scotch-Brite web pad, impregnated with a very fine (AVFN) Aluminium Oxide abrasive grain. Ideal for the removal of 'galling' from press brake tooling. Pad size 225mm x 155mm.

DESCRIPTION	CAT. NO.	PRICE
Hand Pad (Pack of 10)	55297	



URETHANE ROLLS

Urethane Rolls for mark-free bending. Urethane dies are also available. Contact the sales desk for prices and lead times.

DESCRIPTION	CAT. NO.	PRICE
0.4mm x 152mm x 30m (white)	42530	
0.8mm x 152mm x 30m (white)	42531	
0.6mm x 152mm x 30m* (blue)	42532	

* Suitable for heavy duty applications, but not suited for deep drawer applications.



EXPRESS CLAMP TORQUE WRENCH KIT

COMPONENT	CAT. NO.	PRICE
Complete Kit	8002	
Case	8003	
Pivots	43726	
Wrench	6793	
Hex Tips	6795	



MAGNETIC SQUARING BLOCK

Versatile and durable, this 90° squaring block can be used for left or right support and gauging. Strong magnets hold the lightweight tool in place and allow for easy repositioning.

DESCRIPTION	CAT. NO.	PRICE
All materials	55396	
Aluminium & Stainless Steel	55394	



MAGNETIC SQUARING ARM

Adjustable from 0° to 90° and available in left or right-handed versions for user preference and part requirements. The flat surface provides a shelf for small components so operators can position the part and remove their fingers before bending. It can also be used as an end stop to accurately square Z-bends

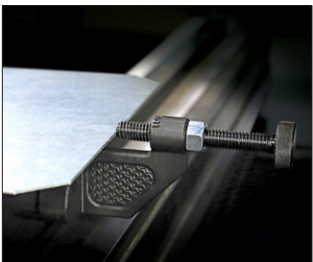
DESCRIPTION	CAT. NO.	PRICE
Right Hand	47000	
Left Hand	47001	



MAGNETIC SQUARING BLOCK ADJUSTABLE

Tool free adjustment to infinite angles this block is adjustable for use as a left or right hand gauge. It is small in size yet big enough to provide a surface to rest the part.

CAT. NO. 55400	
----------------	--



MAGNETIC GAUGE

Occasionally, you need to gauge outside the frame of the brake, the part doesn't quite work with part configuration, or you might want the gauge on the front of the brake. One simple solution to keep on hand is a Wilson Tool magnetic gauge. This solution is on the shelf ready to ship.

CAT. NO. 988611	
-----------------	--



DIAMOND FILE

16cm industrial file. Plated with finely selected diamond powder, 120-140 mesh. Can be used on hardened tool steel.

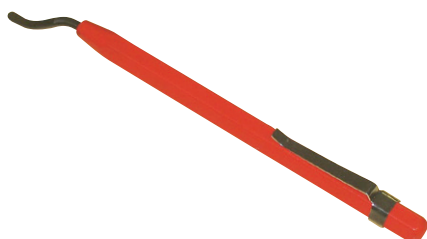
CAT. NO. 6059



DIAMOND NEEDLE FILE SET - 16cm

150 Grain (medium grade). With tapered handles. Supplied in a PVC wallet. Suitable for light duty and workshop use. Contains hand, half round, three square, round, square and knife.

CAT. NO. 55000



MINI BURR SHEET METAL DEBURRING TOOL

This tool consists of a B10 universal blade mounted in an 8mm hexagonal aluminium handle. Non-removable blade. Length 140mm. Supplied with pocket clip.

CAT. NO. 55003



OIL STONE

100mm x 13mm 3 square aluminium oxide sharpening stone.

CAT. NO. 6060



MAG SQUARE - ON/OFF MAGNET

On/Off work holding magnet with 70kg of hold force. Size: 30mm Square

CAT. NO. 974150

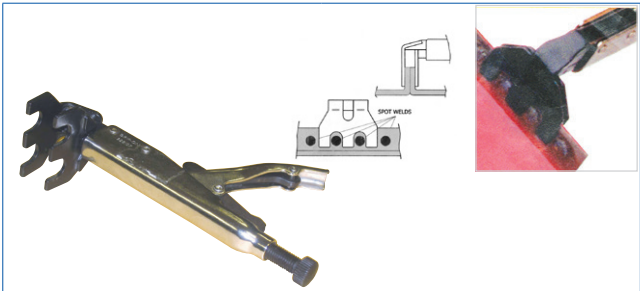


PICK UP TOOL

Retrieve items from hard to access places, extends to 450mm in length. .

CAT. NO. 55320

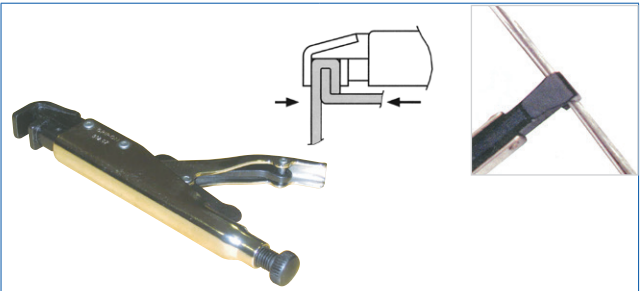
HAND TOOLS



LAP AND SPOT WELD JOINT CLAMP

The 'W' shaped jaw allows four consecutive spot welds without moving the tool. Jaw width 57mm. Throat depth 36mm.

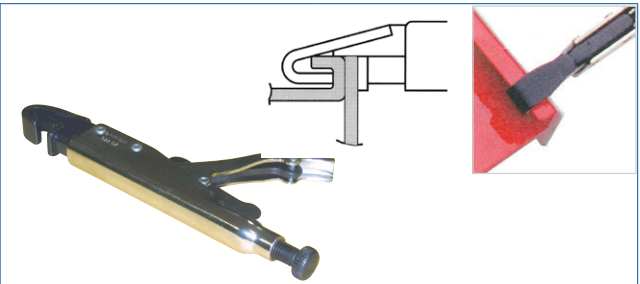
CAT. NO. 55048



LAP JOINT CLAMP

Clamps two lap joints. Jaw width 18mm.

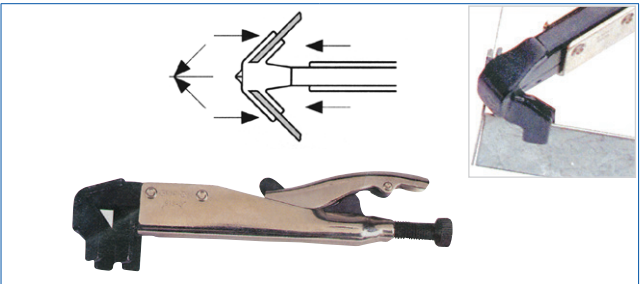
CAT. NO. 55049



FLANGED LAP JOINT CLAMP

Clamps two flanged adjacent joints. Jaw width 18mm. Throat depth 7mm.

CAT. NO. 55050



ANGLE CLAMP

Clamps two sheet metal pieces of the same thickness at 90° to one another. Jaw width 50mm. Throat depth 15mm.

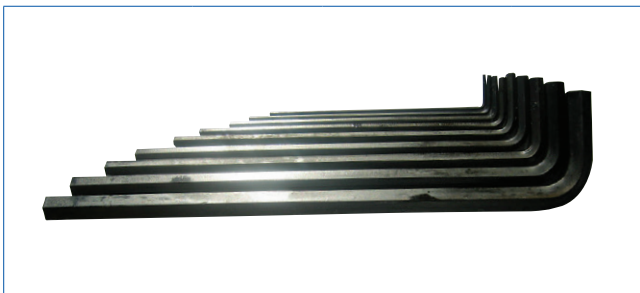
CAT. NO. 55047



SOFT FACE HAMMER

Polyurethane dead-blow hammer. Inside hammer head are steel pellets which impact a split second after the hammer face, reducing rebound.

CAT. NO. 6106



METRIC HEX KEY WRENCH SET

Metric 9 piece long arm set. Contains 1.5 x 77, 2 x 83, 2.5 x 90, 3 x 98, 4 x 106, 5 x 118, 6 x 137, 8 x 156, and 10 x 170mm.

CAT. NO. 24307

SAE HEX KEY WRENCH SET

Imperial 13 piece set. Contains .050", 1/16", 5/64", 3/32", 7/64", 1/8", 9/64", 5/32", 3/16", 7/32", 1/4", 5/16" and 3/8".

CAT. NO. 6057



SPANNER WRENCH

Adjustable 'c' hook wrench for removing B Station Thick Turret and 1/4" Station Thin Turret/Strippit punch heads.

CAT. NO. 6058



9mm HEX NUT DRIVER

Selected for assembly / disassembly of your Form tool die bases, for general maintenance and upkeep.

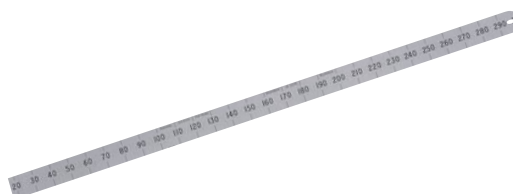
CAT. NO. 55266



5M LOCKING TAPE

Designed for industrial use with a textured rubber non-slip grip case and corrosion resistant blade and hook.

CAT. NO. 55389



ENGINEERS RULE

DESCRIPTION	CAT. NO.	PRICE
150mm	55016	
300mm	55017	



TRU-ARCS PLIERS

Retaining ring pliers for changing Old Style B Station Thick Turret strippers and Old Style 5/8" Drop-In strippers.

CAT. NO. 6056




SURE SHOT SPRAYER

Pressurized air spray can, suitable for applying bulk chemicals (e.g. sheet lubricants). 950ml maximum liquid capacity.

CAT. NO. 6120

HAND TOOLS



WIRE BRUSH


DESCRIPTION	CAT. NO.	PRICE
3-Row	55068	
5-Row	55069	



TINSNIPS

Manufactured from drop forged carbon steel with hardened and precision ground blades which can be re-sharpened.

CAT. NO. 55061	
----------------	--



SUCTION LIFTER

A suction cup used for moving sheet metal, whilst preventing risk of injury on sharp edges. Each lifter can hold 25–30kg and can easily grip onto oiled sheets.

CAT. NO. 55395	
----------------	--

WILSON TOOL INTERNATIONAL (EUROPE) LTD.

WORLD HEADQUARTERS

Wilson Tool International - United States

Tel (Free): 800-328-9646 | Tel: 651-286-6001
Email: sales@wilsontool.com

NORTH AMERICA

Wilson Tool - Canada

Punching and Stamping Division
Email: punching@wilsontoolcanada.com

Wilson Tool - Canada

Press Brake Division
Tel: 800-268-4180
Email: bending@wilsontoolcanada.com

Wilson Tool - Mexico

Tel: (81) 1665 1249
Email: americalatina@wilsontool.com

SOUTH AMERICA

Milling Ferramentas - Brazil

Tel: 55 11 5621-2100
Email: vendas@milling.com.br

Distribuidor România:

SM TECH SRL

<https://www.sm-tech.ro>

info@sm-tech.ro

Tel : 0374-991480

Mobil / Whatsapp: 0745-528494

EUROPE / MIDDLE EAST / AFRICA

Wilson Tool - United Kingdom

Tel (Free): 0800-373748 | Tel: +44 1793 831818
Email: sales@wilsontool.eu.com

Wilson Tool - Germany

Tel: +49 5723 747 0
Fax: +49 5723 747 10
Email: verkauf@wilsontool.eu.com

Wilson Tool - Denmark

Tel: +45 44 53 1699 | Fax: +45 44 53 0607
Email: salesdk@wilsontool.eu.com

Wilson Tool - France

Tel: +33 (0) 164 13 47 80 | Fax: +33 (0) 164 13 47 81
Email: ventes@wilsontool.eu.com

Wilson Tool - Switzerland

Tel (Free): 00800-9457668665 | Tel: +49 5723 747 0
Fax (Free): 00800-945766329 | Fax: +49 5723 747 10
Email: verkauf@wilsontool.eu.com

Toolspress - Italy

Tel: +39 0521 850510 / 850677
Fax: +39 0521 850796
Email: sales@toolspress.com



© Wilson Tool International



Wilson Tool International | wilsontool.com | sales@wilsontool.eu.com